
Indiana Electricity Projections: The 2021 Forecast

Prepared by:

Timothy A. Phillips
Marco A. Velástegui
Douglas J. Gotham
Andrew E. Kain
Liwei Lu
David G. Nderitu
Cindy Fate

*State Utility Forecasting Group
Discovery Park
Purdue University
West Lafayette, Indiana*

December 2021

Prepared for:

*Indiana Utility Regulatory Commission
Indianapolis, Indiana*

2021 Indiana Electricity Projections

Table of Contents

Table of Contents

	Page
List of Figures	iv
List of Tables	vi
Foreword	viii
Chapter 1 - Forecast Summary	1-1
Overview.....	1-1
Outline of the Report.....	1-1
The Regulated Modeling System.....	1-2
Major Forecast Assumptions.....	1-2
<i>Economic Activity Projections</i>	1-2
<i>Demographic Projections</i>	1-3
<i>Fossil Fuel Price Projections</i>	1-3
The Base Scenario	1-3
<i>Resource Implications</i>	1-4
<i>Demand-Side Resources</i>	1-4
<i>Supply-Side Resources</i>	1-5
<i>Resource Needs</i>	1-6
<i>Equilibrium Price and Energy Impact</i>	1-7
<i>Low and High Scenarios</i>	1-8
Chapter 2 - Overview of the SUFG Electricity Modeling System	2-1
Modeling System Changes	2-1
Regulated Modeling System.....	2-1
<i>Energy Forecasting Models</i>	2-3
<i>Aurora</i>	2-4
<i>Utility Finance & Rates Models</i>	2-4
<i>Resource Requirements</i>	2-4
<i>Scenarios</i>	2-5
Presentation and Interpretation of Forecast Results.....	2-5
Chapter 3 - Indiana Projections of Electricity Requirements, Peak Demand, Resource Needs, and Prices	3-1
Introduction	3-1
Most Probable Forecast.....	3-1
<i>Demand-Side Resources</i>	3-1
<i>Supply-Side Resources</i>	3-3
<i>Equilibrium Price and Energy Impact</i>	3-6
Low and High Scenarios	3-8
<i>Resource and Price Implications of Low and High Scenarios</i>	3-8

2021 Indiana Electricity Projections

Table of Contents

Chapter 4 - Major Forecast Inputs and Assumptions	4-1
Introduction	4-1
Macroeconomic Scenarios	4-1
Economic Activity Projections.....	4-1
Demographic Projections.....	4-4
Fossil Fuel Price Projections.....	4-4
Demand-Side Management, Energy Efficiency and Demand Response.....	4-5
Changes in Forecast Drivers from 2017 Forecast.....	4-7
<i>Non-manufacturing Employment</i>	4-7
<i>Real Personal Income</i>	4-8
<i>Real Manufacturing Gross State Product</i>	4-9
<i>Transportation Equipment Industry</i>	4-10
<i>Primary Metals Industry</i>	4-11
Forecast Uncertainty	4-12
References.....	4-12
 Chapter 5 - Residential Electricity Sales	5-1
Overview.....	5-1
Historical Perspective	5-1
Model Description	5-2
Summary of Results.....	5-5
<i>Model Sensitivities</i>	5-5
<i>Indiana Residential Electricity Sales Projections</i>	5-6
<i>Indiana Residential Electricity Price Projections</i>	5-8
 Chapter 6 - Commercial Electricity Sales	6-1
Overview.....	6-1
Historical Perspective	6-1
Model Description	6-2
Summary of Results.....	6-4
<i>Model Sensitivities</i>	6-5
<i>Indiana Commercial Electricity Sales Projections</i>	6-5
<i>Indiana Commercial Electricity Price Projections</i>	6-7
 Chapter 7 - Industrial Electricity Sales	7-1
Overview.....	7-1
Historical Perspective	7-1
Model Description	7-2
Summary of Results.....	7-4
<i>Model Sensitivities</i>	7-5
<i>Indiana Industrial Electricity Sales Projections</i>	7-5

2021 Indiana Electricity Projections Table of Contents

<i>Indiana Industrial Electricity Price Projections</i>	7-8
Appendix	Appendix-1
List of Acronyms	Acronym-1

2021 Indiana Electricity Projections

List of Figures

List of Figures

Page

1-1. Indiana Electricity Requirements in GWh (Historical, Current, and Previous Forecasts)	1-5
1-2. Indiana Peak Demand Requirements in MW (Historical, Current, and Previous Forecasts)	1-5
1-3. Indiana Total Demand and Supply in MW (SUFG Base)	1-6
1-4. Indiana Real Price Projections in cents/kWh (2017 Dollars) (Historical, Current, and Previous Forecasts).....	1-8
1-5. Indiana Electricity Requirements by Scenario in GWh	1-9
2-1. Cost-Price-Demand Feedback Loop.....	2-2
2-2. Forecasting Modeling System Flowchart.....	2-3
3-1. Indiana Electricity Requirements in GWh (Historical, Current, and Previous Forecasts)	3-2
3-2. Indiana Peak Demand Requirements in MW (Historical, Current, and Previous Forecasts)	3-3
3-3. Indiana Total Demand and Supply in MW (SUFG Base).....	3-6
3-4. Indiana Real Price Projections in cents/kWh (2019 Dollars) (Historical, Current, and Previous Forecasts).....	3-7
3-5. Indiana Electricity Requirements by Scenario in GWh	3-9
3-6. Indiana Peak Demand Requirements by Scenario in MW	3-10
4-1. Utility Real Fossil Fuel Prices	4-5
4-2. Projections of Incremental Peak Demand Reductions from Energy Efficiency and Demand Response.....	4-7
4-3. Indiana Non-manufacturing Employment (thousands of people).....	4-8
4-4. Indiana Real Personal Income (billions of 2012 dollars).....	4-9
4-5. Indiana Real Manufacturing GSP (billions of 2012 dollars)	4-10
5-1. Structure of Residential End-Use Energy Modeling System.....	5-4
5-2. Indiana Residential Electricity Sales in GWh (Historical, Current, and Previous Forecasts).....	5-7
5-3. Indiana Residential Electricity Sales by Scenario in GWh	5-8
5-4. Indiana Residential Base Real Price Projections (in 2019 Dollars)	5-9
6-1. Structure of Commercial End-Use Energy Modeling System	6-3
6-2. Indiana Commercial Electricity Sales in GWh (Historical, Current, and Previous Forecasts)	6-6
6-3. Indiana Commercial Electricity Sales by Scenario in GWh.....	6-7
6-4. Indiana Commercial Base Real Price Projections (in 2019 Dollars)	6-8
7-1. Selected Statistics for Indiana's Industrial Sector (Without DSM) (Percent)	7-3
7-2. Structure of Industrial Energy Modeling System.....	7-4
7-3. Indiana Industrial Electricity Sales in GWh (Historical, Current, and Previous Forecasts).....	7-6
7-4. Indiana Industrial Electricity Sales by Scenario in GWh	7-7

***2021 Indiana Electricity Projections
List of Figures***

7-5. Indiana Industrial Base Real Price Projections (in 2017 Dollars) 7-8

2021 Indiana Electricity Projections

List of Tables

List of Tables

Page

1-1. Annual Electricity Sales Growth (Percent) by Sector (Current Forecast vs. 2019 and 2018 Projections).....	1-4
1-2. Indiana Resource Plan in MW (SUFG Base)	1-7
3-1. Indiana Electricity Requirements Average Compound Growth Rates (Percent).....	3-2
3-2. Indiana Peak Demand Requirements Average Compound Growth Rates (Percent)	3-3
3-3. Annual Electricity Sales Growth (Percent) by Sector (Current Forecast vs. 2019 and 2018 Projections)	3-3
3-4. Indiana Resource Plan in MW (SUFG Base)	3-5
3-5. Indiana Real Price Average Compound Growth Rates (Percent).....	3-7
3-6. Indiana Electricity Requirements Average Compound Growth Rates by Scenario (Percent)	3-8
3-7. Indiana Peak Demand Requirements Average Compound Growth Rates by Scenario (Percent)....	3-9
3-8. Indiana Selected Resources by Scenario in MW.....	3-11
4-1. Growth Rates for CEMR Projections of Selected Economic Activity Measures (Percent).....	4-3
4-2. 2019 Embedded DSM and 2020 Incremental Peak Demand Reductions from Energy Efficiency and Annual Demand Response Programs (MW).....	4-6
4-3. 2019 and 2021 CEMR Projections for Indiana Non-manufacturing Employment	4-8
4-4. 2019 and 2021 CEMR Projections for Indiana Real Personal Income	4-9
4-5. 2019 and 2021 CEMR Projections for Indiana Real Manufacturing GSP.....	4-10
4-6. 2019 and 2021 Adjusted CEMR Projections for Indiana Real Transportation Equipment GSP...	4-11
4-7. 2019 and 2021 CEMR Projections for Indiana Real Primary Metals GSP	4-11
5-1. Selected Statistics for Indiana’s Residential Sector (Without DSM) (Percent)	5-5
5-2. Residential Model Long-Run Sensitivities.....	5-6
5-3. Indiana Residential Electricity Sales Average Compound Growth Rates (Percent)	5-7
5-4. History of SUFG Residential Sector Growth Rates (Percent)	5-7
5-5. Residential Model - Growth Rates (Percent) for Selected Variables (2021 SUFG Scenarios and 2019 and 2018 Base Forecasts).....	5-7
5-6. Indiana Residential Electricity Sales Average Compound Growth Rates by Scenario (Percent).....	5-8
5-7. Indiana Residential Base Real Price Average Compound Growth Rates (Percent)	5-9
6-1. Selected Statistics for Indiana’s Residential Sector (Without DSM) (Percent)	6-4
6-2. Commercial Model Long-Run Sensitivities	6-5
6-3. Indiana Commercial Electricity Sales Average Compound Growth Rates (Percent)	6-5
6-4. Commercial Model- Growth Rates (Percent) for Selected Variables (2021 SUFG Scenarios and 2019 and 2018 Base Forecasts).....	6-6
6-5. History of SUFG Commercial Sector Growth Rates (Percent).....	6-6
6-6. Indiana Commercial Electricity Sales Average Compound Growth Rates by Scenario (Percent).....	6-7
6-7. Indiana Commercial Base Real Price Average Compound Growth Rates (Percent)	6-8

2021 Indiana Electricity Projections List of Tables

7-1. Selected Statistics for Indiana’s Industrial Sector (Without DSM) (Percent)	7-3
7-2. Industrial Model Long-Run Sensitivities.....	7-5
7-3. Indiana Industrial Electricity Sales Average Compound Growth Rates (Percent)	7-6
7-4. History of SUFG Industrial Sector Growth Rates (Percent)	7-7
7-5. Indiana Industrial Electricity Sales Average Compound Growth Rates by Scenario (Percent).....	7-7
7-6. Indiana Industrial Base Real Price Average Compound Growth Rates (Percent)	7-8

2021 Indiana Electricity Projections

Foreword

Foreword

This report presents the 2021 projections of future electricity requirements for the state of Indiana for the period 2020-2039. This study is part of an ongoing independent electricity forecasting effort conducted by the State Utility Forecasting Group (SUFG). SUFG was formed in 1985 when the Indiana legislature mandated a group be formed to develop and keep current a methodology for forecasting the probable future growth of electricity usage within Indiana. The Indiana Utility Regulatory Commission contracted with Purdue and Indiana Universities to accomplish this goal. SUFG produced its first set of projections in 1987 and has updated these projections periodically. This is the eighteenth set of projections.

The objective of SUFG, as defined in Indiana Code 8-1-8.5 (amended in 1985), is as follows:

To arrive at estimates of the probable future growth of the use of electricity... *“the commission shall establish a permanent forecasting group to be located at a state supported college or university within Indiana. The commission shall financially support the group, which shall consist of a director and such staff as mutually agreed upon by the commission and the college or university, from funds appropriated by the commission. This group shall develop and keep current a methodology for forecasting the probable future growth of the use of electricity within Indiana and within this region of the nation. To do this the group shall solicit the input of residential, commercial and industrial consumers and the electric industry.”*

This report provides projections from a statewide perspective. Individual utilities will experience different levels of growth due to a variety of economic, geographic, and demographic factors.

SUFG has maintained a similar format for this report as was used in recent reports to facilitate comparisons. With the exception of the upgrades described in Chapter 2, details on the operation of the modeling system are limited; for more detailed information, the reader is asked to contact SUFG directly or to look back to the 1999 forecast that is available for download from the SUFG website located at:

<http://www.purdue.edu/discoverypark/SUFG/>

The authors would like to thank the Indiana utilities, consumer groups and industry experts who contributed their valuable time, information and comments to this forecast. Also, the authors would like to gratefully acknowledge the Indiana Utility Regulatory Commission for its support, input and suggestions.

This report was prepared by the State Utility Forecasting Group. The information contained in this forecast should not be construed as advocating or reflecting any other organization's views or policy position. Further details regarding the forecast and methodology may be obtained from SUFG at:

State Utility Forecasting Group
Purdue University
Mann Hall, Room 160
203 S. Martin Jischke Drive
West Lafayette, IN 47907-1971
Phone: 765-494-4223
FAX: 765-494-6298
e-mail: sufg@purdue.edu

Chapter 1

Summary

Overview

In this report, the State Utility Forecasting Group (SUGF) provides its eighteenth set of projections of future electricity usage, peak demand, prices and resource requirements. The projections in this forecast are lower than those in previous forecasts, primarily due to increases in energy efficiency, compared to the earlier projections.

This forecast projects electricity usage to decrease somewhat through 2025, then grow through the remainder of the forecast period, with overall growth at a rate of 0.21 percent per year over the 20 years of the forecast. Peak electricity demand is projected to exhibit almost no growth at an average rate of 0.02 percent annually. This corresponds to about 5 megawatts (MW) of increased peak demand per year.

The 2021 forecast predicts Indiana electricity prices to continue to rise in real (inflation adjusted) terms through 2028 and then level off with some volatility late in the forecast period. A number of factors determine the price projections. These include costs associated with future resources required to meet future load, costs associated with continued operation of existing infrastructure, and fuel costs. Costs are included for the transmission and distribution of electricity in addition to production.

This forecast indicates that the state does not need significant additional resources until 2026. This forecast indicates a need for a mix of natural gas-fired combustion turbines and combined cycle units, with wind and solar capacity. Solar and natural gas combined cycle resources are added first. While wind resources are not added until 2030, it ends up having the largest amount of added capacity by the end of the forecast period. In the long term, the projected additional resource requirements are generally lower than in previous forecasts. This is due to the lower projected peak demand.

While SUGF identifies resource needs in its forecasts and reports those needs according to generating unit types, it does not advocate any specific means of meeting them. Required resources could be met through conservation measures, purchases from merchant generators or other utilities, construction of new facilities or some combination thereof. The best method for meeting resource requirements may vary from one utility to another.

Outline of the Report

The current forecast continues to respond to SUGF's legislative mandate to forecast electricity demand. It includes projections of electric energy requirements, peak demand, prices, and capacity requirements. It also provides projections for each of the three major customer sectors: residential, commercial and industrial. Chapter 2 of the report briefly describes SUGF's forecasting methodology, including changes made from previous forecasts. Chapter 3 presents the projections of statewide electricity demand, resource requirements, and price, while Chapter 4 describes the data inputs and Chapters 5 through 7 present integrated projections for each major consumption sector in the state under three scenarios.

2021 Indiana Electricity Projections

Chapter One

- The *base scenario* is intended to represent the electricity forecast that is “most likely” and has an equal probability of being high or low.
- The *low scenario* is intended to represent a plausible lower bound on the electricity sales forecast and has a low probability of occurrence.
- The *high scenario* is intended to represent a plausible upper bound on the electricity sales forecast and also has a low probability of occurrence.

Finally, an Appendix depicts the data sources used to produce the forecast and provides historical and forecast data for energy, peak demand and prices.

The Regulated Modeling System

The SUFG modeling system explicitly links electricity costs, prices and sales on a utility-by-utility basis under each scenario. Econometric and end-use models are used to project electricity use for each major customer group — residential, commercial and industrial — using fuel prices and economic drivers to simulate growth in electric energy use. The projections for each utility are developed from a consistent set of statewide economic, demographic and fossil fuel price projections. In order to project electricity costs and prices, generation resource plans are developed for each utility and the operation of the generation system is simulated. These resource plans reflect “need” from both a statewide and utility perspective.

To determine future resource requirements, SUFG used individual utility reserve margins that reflect the planning reserve requirements of the utility’s regional transmission organization (RTO) to determine the reserve requirements in this forecast. Applying the individual reserve requirements and adjusting for peak load diversity¹ among the utilities provides a statewide reserve requirement of approximately 20.85 percent. The reserve margin in this forecast is higher than the previous one of 19.1 percent, reflecting higher reserve requirements set by the RTOs. This requirement is based on the installed capacity value of the resources, with a modification for the capacity credit for intermittent resources.

Major Forecast Assumptions

In updating the modeling system to produce the current forecast, new projections were developed for all major exogenous variables. These assumptions are summarized below.

Economic Activity Projections

One of the largest influences in any energy projection is growth in economic activity. Each of the sectoral energy forecasting models is driven by economic activity projections, i.e., personal income, population, commercial employment and industrial output. The economic activity assumptions for all three scenarios were derived from the Indiana macroeconomic model developed by the Center for Econometric Model Research (CEMR) at Indiana University. SUFG used CEMR’s February 2021 projections for its base scenario. A major input to CEMR’s Indiana model is a projection of total U.S. employment, which is derived from CEMR’s model of the U.S. economy. The CEMR Indiana projections are based on a national employment projection of 0.89 percent growth per year over the

¹ Load diversity occurs because the peak demands for all utilities do not occur at the same time. SUFG estimates the amount of load diversity by analyzing the actual historical load patterns of the various utilities in the state.

forecast period. Indiana total employment is projected to grow at an average annual rate of 0.88 percent.

Other key economic projections from CEMR are:

- Real personal income (a residential sector model driver) is expected to grow at a 1.45 percent annual rate.
- Non-manufacturing employment (the commercial sector model driver) is expected to average a 1.11 percent annual growth rate over the forecast horizon.
- Manufacturing gross state product (GSP) (the primary industrial sector model driver) is expected to rise at a 2.07 percent real annual rate.²

To capture some of the uncertainty in energy forecasting, SUFG also requested CEMR to produce low and high growth alternatives to its base economic projection. In effect, the alternatives describe a situation in which Indiana either loses or gains shares of national industries compared to the base projection.

Demographic Projections

The projection for population growth in Indiana is 0.34 percent per year. This projection is from the Indiana Business Research Center (IBRC) at Indiana University. The SUFG forecasting system includes a housing model that utilizes population and income assumptions to project the number of households. The IBRC population projection, in combination with the CEMR projection of real personal income, yields an average annual growth in households of 1.14 percent over the forecast period.

Fossil Fuel Price Projections

SUFG's current assumptions are based on the February 2021 projections produced by the Energy Information Administration (EIA) for the East North Central Region. SUFG's fossil fuel real price projections are as follows:

Natural Gas Prices: Natural gas prices are projected to rebound to pre-pandemic levels in the short run and stay relatively flat for the rest of the forecast horizon.

Utility Price of Coal: Coal price projections are relatively flat in real terms throughout the entire forecast horizon as coal consumption decreases due to more natural gas and renewable generation observed in the electric power sector.

The Base Scenario

Figure 1-1 shows the current base scenario projection for electricity requirements in gigawatt-hours (GWh), along with the projections from the previous two forecast reports. Similarly, the base projection for peak demand in MW is shown in Figure 1-2. The annual growth rate for electricity requirements in this forecast is 0.21 percent, while the growth rate for peak demand is 0.02 percent. The growth rates in the 2019 forecast update for electricity requirements and peak demand were 0.67 and 0.60 percent, respectively. The 2021 forecast grows more slowly than the previous ones, primarily due to increased energy efficiency.

² SUFG adjusted CEMR's projections for the transportation equipment industry. The adjustment lowers the overall manufacturing GSP growth rate to 1.31 percent.

2021 Indiana Electricity Projections

Chapter One

Lower growth is seen in two of the three major sectors (commercial and industrial), while the projection for the residential sector is higher. See Chapters 5, 6, and 7 for discussions of the forecast growth in the residential, commercial and industrial sectors.

The growth in peak demand is also lower than in the previous forecasts. The projections of peak demand are for normal weather patterns. Another measure of peak demand growth can be obtained by considering the year to year MW load change. In Figure 1-2, the annual increase is about 5 MW.

Table 1-1. Annual Electricity Sales Growth (Percent) by Sector (Current Forecast vs. 2019 and 2018 Projections)

Sector	Current (2020-2039)	2019 (2018-2037)	2018 (2016-2035)
Residential	0.61	0.45	0.54
Commercial	-1.02	-0.10	0.38
Industrial	0.53	1.26	1.45
Total	0.21	0.67	0.88

Resource Implications

SUFG's resource plans include both demand-side and supply-side resources to meet forecast demand. Utility-sponsored energy efficiency is netted from the demand projection and supply-side resources are added as necessary to maintain a 20.85 percent reserve margin. Demand response loads are treated as an existing resource that can be called on to meet the peak load.

Demand-Side Resources

The current projection includes the energy and demand impacts of existing or planned utility-sponsored energy efficiency programs. Incremental energy efficiency programs, which include new programs and the expansion of existing programs, are projected to reduce peak demand by approximately 200 MW at the beginning of the forecast period and by about 1400 MW at the end of the forecast. It should be noted that this represents a significantly higher impact than in previous SUFG forecasts. Energy efficiency projections were estimated from utility integrated resource plan filings and from information collected directly from the utilities by SUFG.

These energy efficiency projections do not include the demand response loads, which are projected to grow from about 850 MW to 1000 MW over the forecast horizon. See Chapter 4 for additional information about utility-sponsored energy efficiency and demand response.

Figure 1-1. Indiana Electricity Requirements in GWh (Historical, Current, and Previous Forecasts)

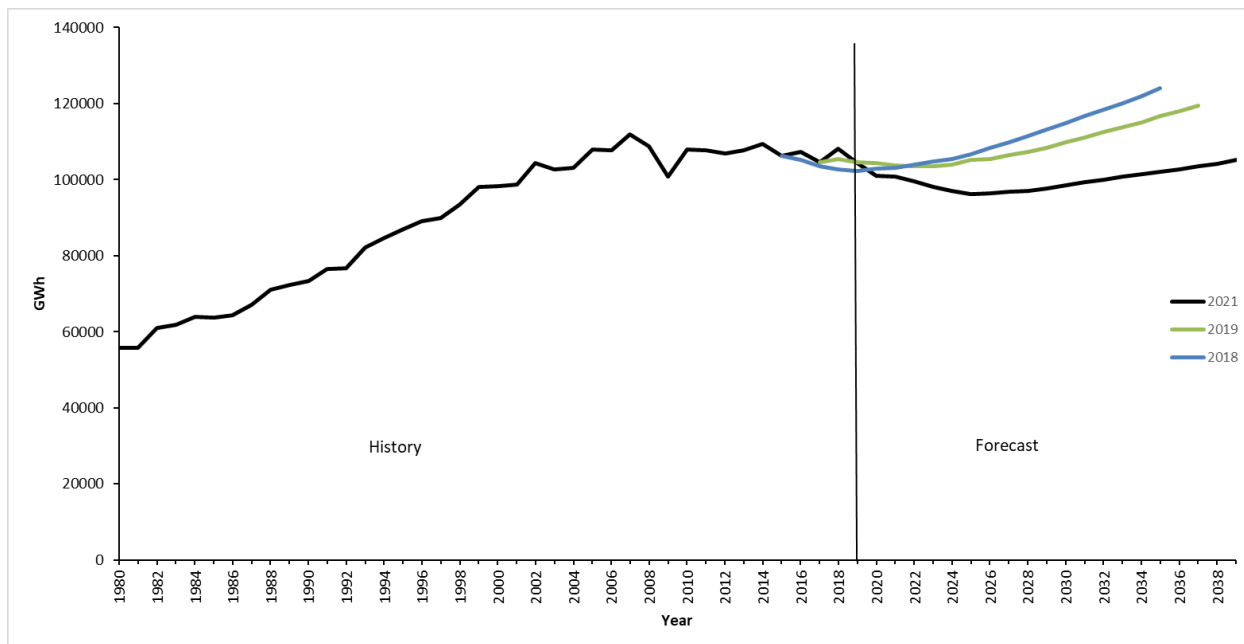
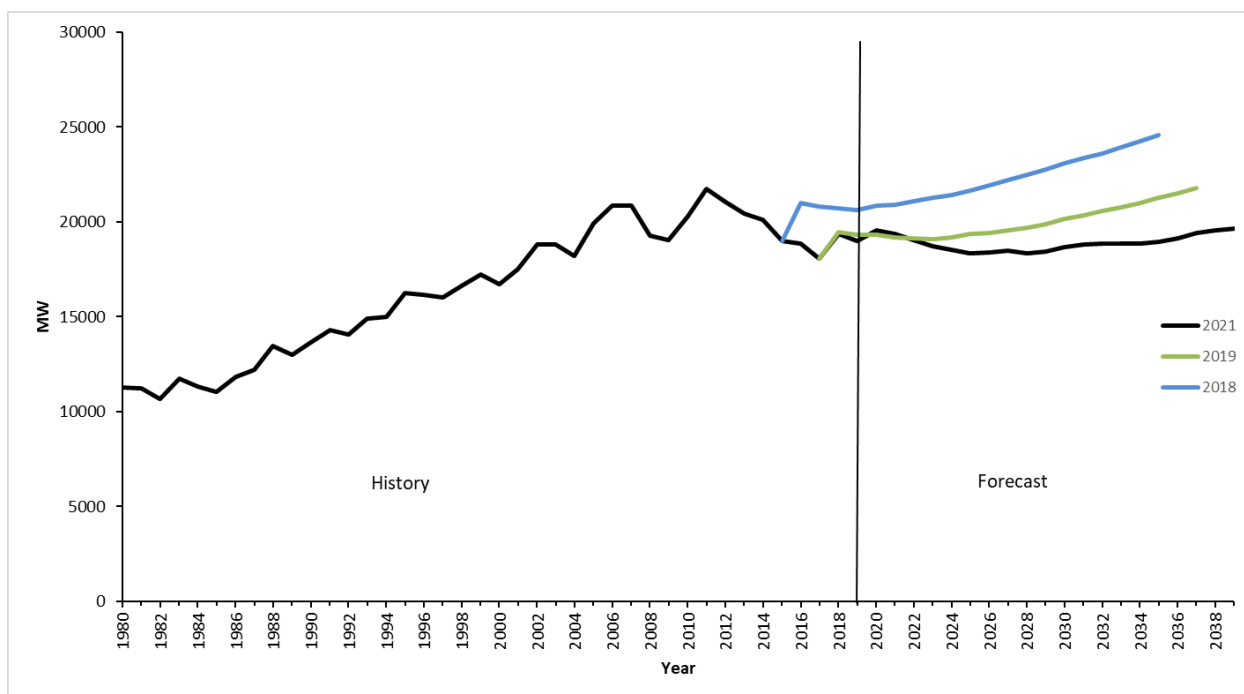


Figure 1-2. Indiana Peak Demand Requirements in MW (Historical, Current, and Previous Forecasts)



Supply-Side Resources

SUFG's base resource plan includes all currently planned capacity changes. Planned capacity changes include: certified, rate base eligible generation additions, retirements, de-ratings due to pollution control retrofits, changes in the amount of demand response that is available, and net changes in firm out-of-state purchases and sales. SUFG does not attempt to forecast long-term out-

2021 Indiana Electricity Projections

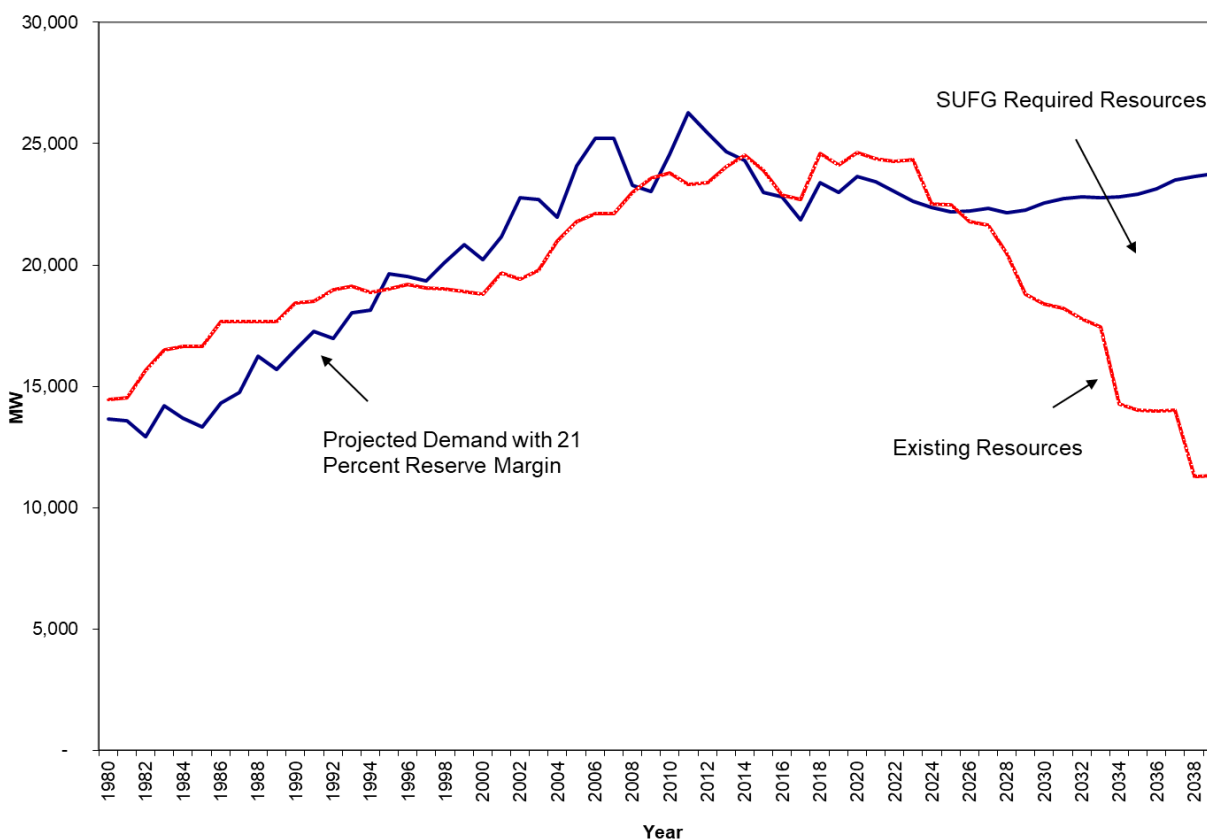
Chapter One

of-state contracts other than those currently in place. Generic new generation resources are then added as necessary during the forecast period to maintain a statewide 20.85 percent reserve margin. The resource type is selected to minimize the overall cost of meeting the load.

Resource Needs

Figure 1-3 and Table 1-2 show the statewide resource plan for the SUFG base scenario. This forecast indicates that the state does not need additional resources until 2026. Although new resources are not needed for to meet the reserve margin requirement, the Aurora model finds it economic to add some resources prior to that. This result continues through 2028, with the reserve requirement determining resource additions afterwards. This forecast indicates a need for a mix of natural gas-fired combustion turbines and combined cycle units, with wind and solar capacity. Solar and natural gas combined cycle resources are added first. While wind resources are not added until 2030, it ends up having the largest amount of added capacity by the end of the forecast period. In the long term, the projected additional resource requirements are generally lower than in previous forecasts. This is due to the lower projected peak demand.

Figure 1-3. Indiana Total Demand and Supply in MW (SUFG Base)



Due to data availability restrictions at the time that SUFG prepared the modeling system to produce this forecast, the most current year with a complete set of actual historical data was 2019. Therefore, 2020 and 2021 numbers represent projections.

2021 Indiana Electricity Projections Chapter One

Table 1-2. Indiana Resource Plan in MW (SUGF Base)

Year	Peak Demand ¹	Existing/ Approved Resources ²	Incremental Change in Resources ³	Required Additional Resources ⁴	Additional Selected Resources ⁵					Reserve Margin ⁶ (percent)
					CT	CC	Wind	Solar	Total	
2020	19,560	24,619		0	0	0	0	0	0	26
2021	19,376	24,386	-233	0	0	0	0	0	0	26
2022	19,051	24,260	-126	0	0	0	0	0	0	27
2023	18,736	24,330	70	0	0	0	0	268	268	31
2024	18,511	22,503	-1,827	0	0	835	0	268	1,103	27
2025	18,359	22,474	-30	0	0	835	0	268	1,103	28
2026	18,395	21,775	-699	455	5	1,041	0	357	1,403	25
2027	18,494	21,651	-123	699	5	1,265	0	357	1,627	25
2028	18,331	20,483	-1,168	1,669	437	2,106	0	357	2,901	26
2029	18,432	18,807	-1,676	3,468	658	2,778	0	357	3,793	21
2030	18,674	18,382	-426	4,186	793	3,153	606	565	5,117	21
2031	18,802	18,221	-161	4,501	1,104	3,153	781	565	5,603	21
2032	18,872	17,786	-435	5,020	1,407	3,296	1,739	607	7,049	21
2033	18,850	17,446	-340	5,334	1,407	3,525	3,066	607	8,605	21
2034	18,862	14,291	-3,155	8,504	3,560	3,988	3,240	2,500	13,289	21
2035	18,953	14,022	-269	8,883	3,560	4,098	3,682	3,500	14,841	21
2036	19,153	13,985	-37	9,161	3,682	4,098	3,842	4,262	15,884	21
2037	19,440	14,005	20	9,489	4,038	4,111	4,108	4,277	16,534	21
2038	19,563	11,298	-2,707	12,344	4,994	5,896	5,333	4,677	20,900	21
2039	19,650	11,330	33	12,417	4,994	5,953	6,548	4,677	22,172	21

1 Peak demand reflects utility-sponsored energy efficiency programs but is not adjusted for demand response loads.

2 Existing/approved resources include installed capacity plus approved new capacity plus demand response plus firm purchases minus firm sales.

3 Incremental change in resources is the change in existing/approved resources from the previous year. The change is due to new, approved capacity becoming operational, retirements of existing capacity, changes in available demand response loads, and changes in firm purchases and sales.

4 Required additional resources represent the amount of additional resources that are needed to meet the target statewide reserve margin.

5 Additional selected resources are the cumulative amount of additional resources chosen by the optimization model to meet future demand at least cost.

6 The reserve margin reflects existing and approved resources plus additional selected resources, after adjusting for the expected availability of intermittent resources at the time of peak demand.

Equilibrium and Price Impact

SUGF's base scenario equilibrium real electricity price trajectory is shown in Figure 1-4. Real prices are projected to increase by 46 percent from 2019 to 2026 and then slowly increase by 0.6 percent until the end of the forecast period. The change in prices early in the forecast horizon result from a number of factors. First, there are significant capital investment in transmission, distribution, and newly approved generation that is modeled in the first few years. Also, there is a substantial amount of long-term debt that is currently scheduled to mature by 2025. While the utilities may re-finance some of that debt, SUGF does not know how much, for how long, and at what interest rate. Thus,

2021 Indiana Electricity Projections

Chapter One

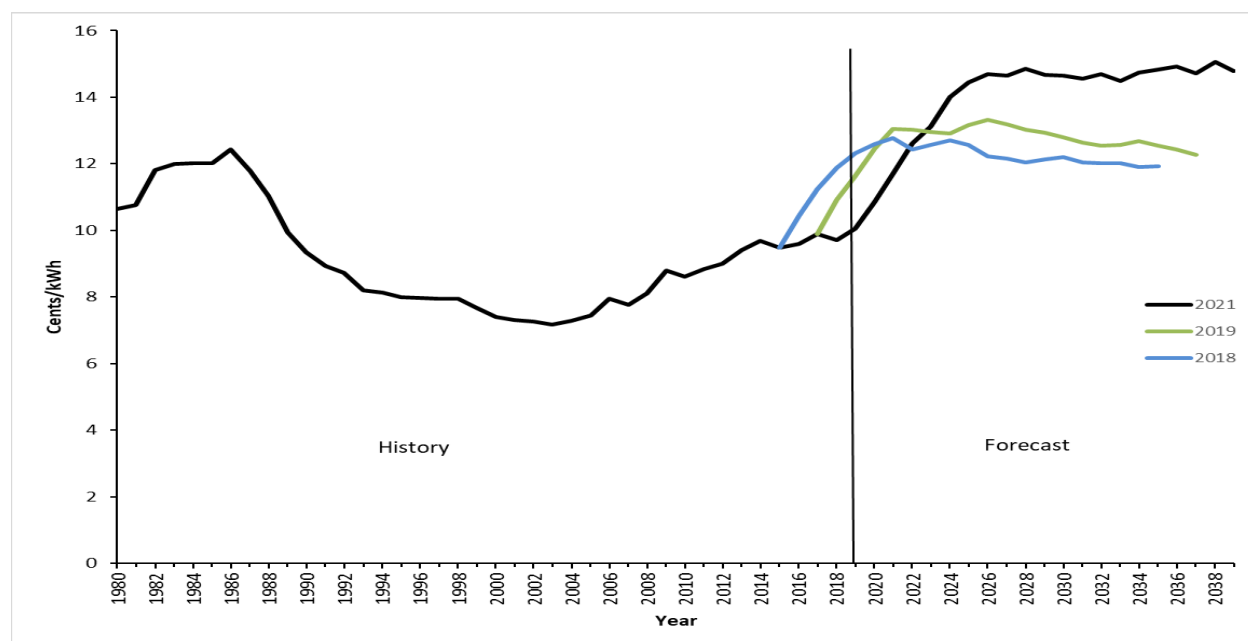
long-term debt is modeled as being paid off by the maturation date, which likely frontloads some costs. Furthermore, the settlement of the Rockport 2 case (IURC cause 45546), which could mitigate part of the price increase, occurred after the forecast was completed. Securitization of stranded generation assets is not modeled at this time due to insufficient data.

The price increase is significant, thus the electricity requirements projection for this portion of the forecast period is affected. Since electricity prices are an input to the forecasting models, the price increases in the early years cause the projected sales to decrease. In turn, this can cause further price increases if sales decline more than revenue requirements. This occurs during the first few years of the forecast, in part because there is little to no avoided cost of new resources in that time period since the state has enough capacity to meet the reserve requirement.

SUFG's equilibrium price projections for two previous forecasts are also shown in Figure 1-4. The price projection labeled "2018" is the base case projection contained in SUFG's 2018 forecast update and the one labeled "2019" is the base case projection from SUFG's 2019 forecast. For the prior price forecasts, SUFG rescaled the original price projections to 2019 dollars (from 2015 and 2017 dollars) using the personal consumption deflator from the CEMR macroeconomic projections.

A number of factors determine the differences among the price projections in Figure 1-4. These include costs associated with future resources required to meet future load, costs associated with continued operation of existing infrastructure, and fuel costs. Costs are included for the transmission and distribution of electricity in addition to production. Environmental rules that are in place at the time the forecast was prepared are included, while proposed and potential future rules are not.

Figure 1-4. Indiana Real Price Projections in cents/kWh (2019 Dollars) (Historical, Current, and Previous Forecasts)

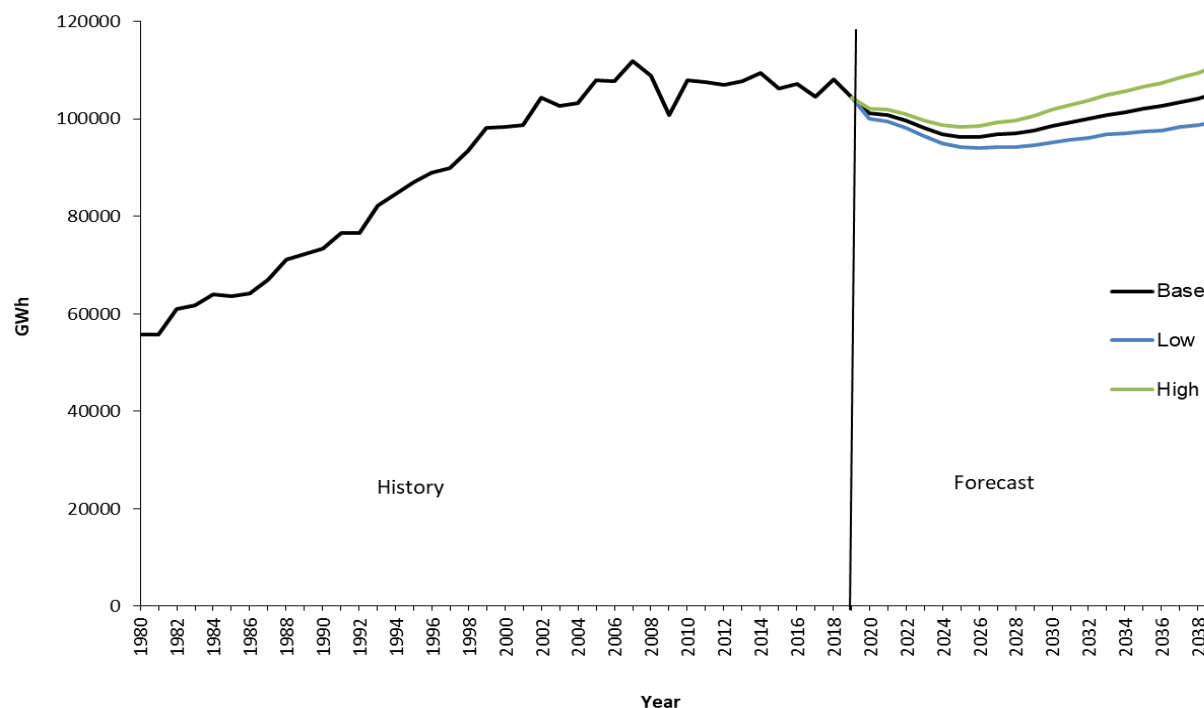


Low and High Scenarios

SUFG has constructed alternative low and high economic growth scenarios. These low probability scenarios are used to indicate the forecast range, or dispersion of possible future trajectories. Figure 1-5 provides the statewide electricity requirements for the base, low and high scenarios. The annual

growth rates for the base, low and high scenarios are 0.21, -0.03, and 0.43, respectively. These differences are due to economic growth assumptions in the scenario-based projections. The trajectories for peak demand in the low and high scenarios are similar to the electricity requirements trajectories.

Figure 1-5. Indiana Electricity Requirements by Scenario in GWh



Chapter 2

Overview of the SUFG Electricity Modeling System

Modeling System Changes

For this forecast, SUFG used updated versions of its residential and commercial sector forecasting models. The Residential Energy Demand Modeling System (REDMS) and the Commercial Energy Demand Modeling System (CEDMS) are both agent-based end use models developed by Jerry Jackson Associates, LLC. SUFG has been using earlier versions of both models for more than ten years.

Also, beginning with this forecast, SUFG modeled battery storage as a selectable resource in the resource expansion model. While batteries were not selected by the model in the final iteration of the modeling system, small amounts were chosen in some of the intermediate runs. Furthermore, it should be noted that long-term resource expansion models cannot capture some of the potential benefits of energy storage, such as the provision of ancillary services. Therefore, it should not be assumed that energy storage is not an economic option based on the results of this forecast.

Regulated Modeling System

The modeling system captures the dynamic interactions between customer demand, the utility's operating and investment decisions, and customer rates by cycling through the various models until equilibrium is attained. The SUFG modeling system is unique among utility forecasting and planning models because of its comprehensive and integrated characteristics.

A distinctive characteristic of the modeling system is its ability to capture the interaction between future electricity demand and electricity prices through an iterative process. During each cycle of the process, price changes in the model cause customers to adjust their consumption of electricity, which in turn affects system demand, which in turn affects the utility's operating and investment decisions. These changes in demand and supply bring forth yet another change in price and the cycle is complete. After each cycle, the modeling system compares the "after" electricity prices from the utility finance & rates model to the "before" prices input to the energy consumption models. If these prices match, they are termed equilibrium prices in the sense that they balance demand and supply, and the iterative process ends. Otherwise, the modeling system continues to cycle through the models until equilibrium is attained as is illustrated in Figure 2-1.

Figure 2-1. Cost-Price-Demand Feedback Loop

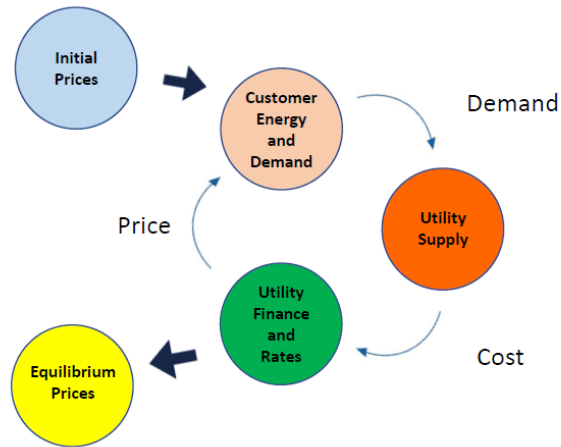
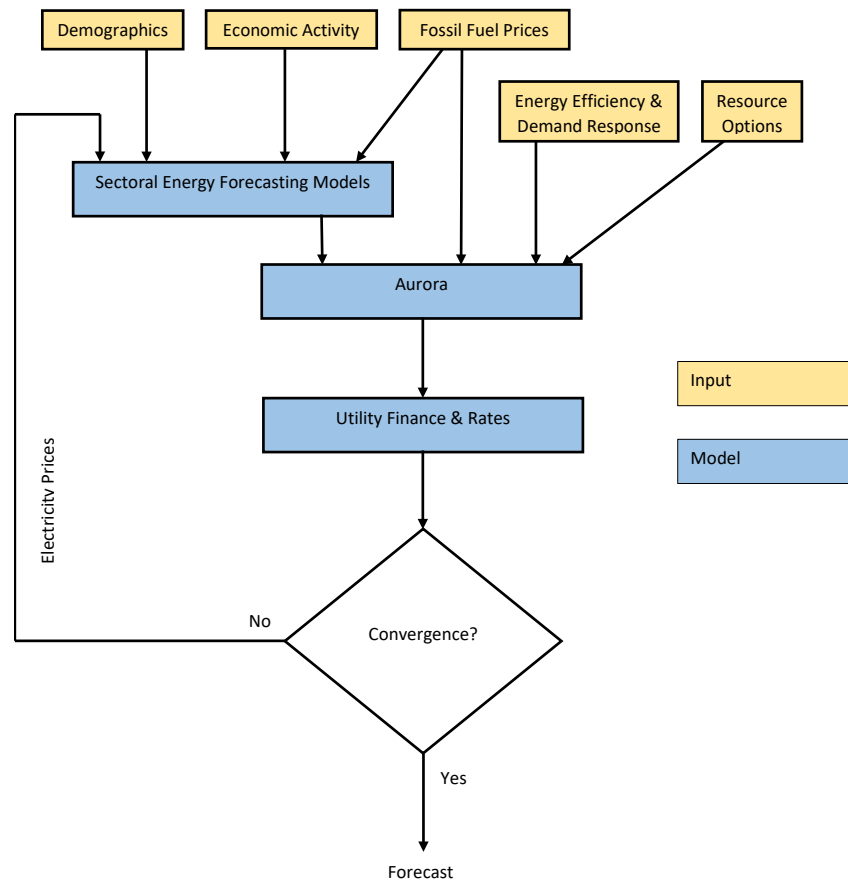


Figure 2-2 is a flowchart that illustrates how the modeling system functions. Projections of demographic, economic, and price drivers are inputs to utility and customer sector specific forecasting models. The energy and peak demand forecasts are inputs to Aurora, which simulates economic dispatch, trade among the utilities, and determines future resources. Cost information from Aurora are passed to the utility finance models to determine the resulting prices. The energy forecasting models are then rerun with the new prices, starting the next iteration. The process is repeated until prices from one iteration to the next are stable, indicating that convergence has been achieved.

Figure 2-2. Forecasting Modeling System Flowchart



Energy Forecasting Models

The energy forecasting models are used to develop projections for each of the five investor-owned utilities (IOUs): Duke Energy Indiana, Indiana Michigan Power Company, Indianapolis Power & Light Company, Northern Indiana Public Service Company, and CenterPoint Energy. In addition, projections are developed for the three not-for-profit (NFP) utilities: Hoosier Energy Rural Electric Cooperative, Indiana Municipal Power Agency, and Wabash Valley Power Association.

Utility-specific projections of sectoral energy use and prices are developed for each of the three scenarios. These projections are based on projections of demographics, economic activity and fossil fuel prices that are developed outside the modeling system. They are also based on projections of electricity prices for the utilities that are developed within the framework of the modeling system.

SUFG has developed and acquired both econometric and end-use models to project energy use for each major customer group. These models use fuel prices and economic drivers to simulate growth in energy use. The end-use models provide detailed projections of end-use saturations, building shell choices and equipment choices (fuel type, efficiency and rate of utilization). The econometric models capture the same effects but in a more aggregate way. These models use statistical relationships estimated from historical data on fuel prices and economic activity variables. Additional information regarding SUFG's energy models

2021 Indiana Electricity Projections

Chapter Two

for the residential, commercial and industrial sectors can be found in chapters five, six and seven, respectively.

Aurora

Energy Exemplar's Aurora is an optimization program that can perform economic dispatch of generators, allowing for trade among utilities, and determine least-cost resource expansion. Within the SUFG integrated modeling system, it is used to determine the operating costs associated with meeting future loads and the costs of expanding the future set of resources necessary to meet future reserve requirements.

Aurora can consider a variety of future supply-side and demand-side resource options. For this forecast, SUFG included utility-scale solar and wind, battery storage, natural gas-fired combustion turbines and combined cycle units, nuclear, and pulverized coal. Costs and operating characteristics were taken from the Energy Information Administration (EIA). Due to data limitations, demand-side resources were not modeled as a resource option. Utility energy efficiency programs and DR were modeled as fixed quantities based on utility-provided information. See Chapter 4 for more information on the modeling of demand-side resources.

Aurora has the functionality to allow for construction of partial resources. Thus, the model may select to add a fraction of a unit rather than being limited to full units. SUFG has elected to use this option since it facilitates finding an equilibrium solution.

Utility Finance & Rates Models

As part of the upgrades to the modeling system, SUFG has incorporated new financial models to project future electric rates. Previously, the finance and rates submodels of LMSTM performed this function. The current financial model is a modified version of the ORFIN model that was developed by Oak Ridge National Lab. The models determine annual revenue requirements based on each utility's costs associated with existing and future capital investments, operational expenses, debt, and taxes. Those costs are then allocated to the customer sectors and rates are determined using the annual energy forecasts.

Resource Requirements

To determine future resource requirements, SUFG used individual utility reserve margins that reflect the planning reserve requirements of the utility's RTO to determine the reserve requirements in this forecast. Applying the individual reserve requirements and adjusting for peak load diversity¹ among the utilities provides a statewide reserve requirement of approximately 20.85 percent. This requirement is based on the installed capacity value of the resources, with a modification for the capacity credit for intermittent resources.

The existing capacity has been adjusted for retirements, utility purchases and sales, and new construction projects that have been approved by the Indiana Utility Regulatory Commission (IURC) at the time the modeling system was run.

The numbers presented in this report for future resource requirements are the installed capacity selected by Aurora and are not modified for intermittent resources. Also, while SUFG identifies resource needs in its

¹ Load diversity occurs because the peak demands for all utilities do not occur at the same time. SUFG estimates the amount of load diversity by analyzing the actual historical load patterns of the various utilities in the state.

forecasts, it does not advocate any specific means of meeting them. Required resources could be met through conservation measures, purchases from merchant generators or other utilities, construction of new facilities or some combination thereof. The best method for meeting resource requirements may vary from one utility to another.

Scenarios

SUFG's electricity projections are based on assumptions such as economic growth, construction costs and fossil fuel prices. These assumptions are a principal source of uncertainty in any energy forecast. Another major source of uncertainty is the statistical error inherent in the structure of any forecasting model. To provide an indication of the importance of these sources of uncertainty, scenario-based projections are developed by operating the modeling system under varying sets of assumptions. These low probability, low and high growth scenarios capture much of the uncertainty associated with economic growth, fossil fuel prices and statistical error in the model structure.

Presentation and Interpretation of Forecast Results

There are several methods for presenting the various projections associated with the forecast. The actual projected value for each individual year can be provided or a graph of the trajectory of those values over time can be used. Additionally, average compound growth rates can be provided. There are advantages and disadvantages associated with each method. For instance, while the actual values provide a great deal of detail, it can be difficult to visualize how rapidly the values change over time. While growth rates provide a simple measure of how much things change from the beginning of the period to the end, they mask anything that occurs in the middle. For these reasons, SUFG generally uses both methods for presenting the major forecast projections.

Chapter 3

Indiana Projections of Electricity Requirements, Peak Demand, Resource Needs and Prices

Introduction

This chapter presents the forecast of future electricity requirements and peak demand, including the associated new resource requirements and price implications. This report includes three scenarios of future electricity demand and supply: base, low and high. The base scenario is developed from a set of exogenous macroeconomic assumptions that is considered “most likely,” i.e., each assumption has an equal probability of being lower or higher. Additionally, SUFG includes low and high growth macroeconomic scenarios based on plausible sets of exogenous assumptions that have a lower probability of occurrence. These scenarios are designed to indicate a plausible forecast range, or degree of uncertainty underlying the base projection. The most probable projection is presented first.

Most Probable Forecast

As shown in Tables 3-1 and 3-2 and Figures 3-1 and 3-2, SUFG’s current base scenario projection indicates annual growth of 0.21 percent for electricity requirements and 0.02 percent for peak demand. As shown in Table 3-3, the overall growth rate for electricity sales in this forecast is about 0.46 percent lower than the 2019 forecast. The 2021 forecast grows more slowly than the previous ones, primarily due to increased energy efficiency. Lower growth is seen in two of the three major sectors (commercial and industrial), while the projection for the residential sector is higher. See Chapters 5, 6, and 7 for discussions of the forecast growth in the residential, commercial, and industrial sectors.

The growth in peak demand is also lower than that projected in the previous forecasts. Forecast peak demand growth is lower than that of electricity requirements (0.02 versus 0.21 percent). Another measure of peak demand growth can be obtained by considering the average year to year peak MW load change. In Figure 3-2, the annual increase is about 5 MW compared to about 125 MW per year in the previous forecast.

Demand-Side Resources

Beginning with the 2017 forecast, SUFG adjusted the manner in which demand response (DR) programs are modeled and how they are reported. This was necessitated due to the manner in which DR is modeled within Aurora. DR programs are now treated as a resource within the modeling system; previously an adjustment of peak demand was done to account for them outside the utility simulation model. Thus, the peak demand numbers reported in this report have not been adjusted for DR, while the existing resource numbers now include them. DR programs are projected to remain around 1,000 MW over the forecast horizon. As in the past, energy efficiency (EE) programs are treated as a reduction in demand. The current projection includes the energy and demand impacts of existing or planned utility-sponsored EE programs. Incremental EE programs, which include new programs and the expansion of existing programs, are projected to reduce peak demand by approximately 200 MW at the beginning of the forecast period and by about 1,400 MW at the end of the forecast. See Chapter 4 for additional information about DR and EE.

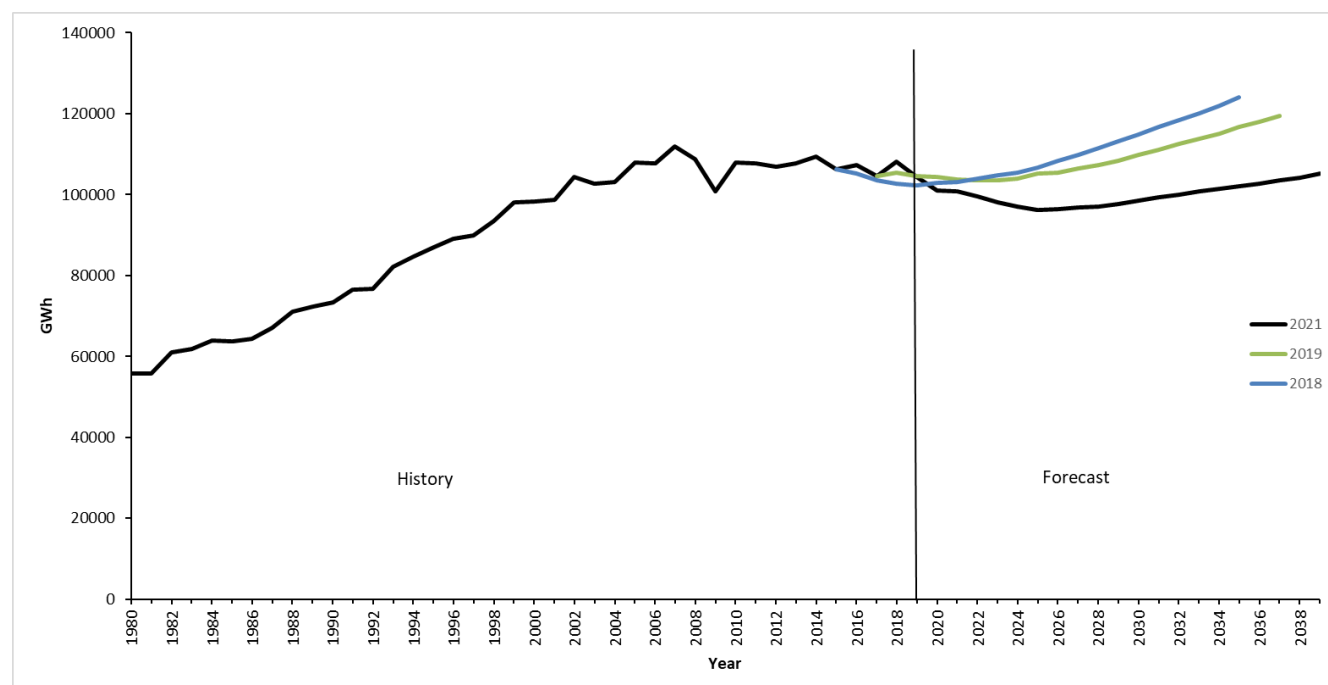
2021 Indiana Electricity Projections

Chapter Three

Table 3-1. Indiana Electricity Requirements Average Compound Growth Rates (Percent)

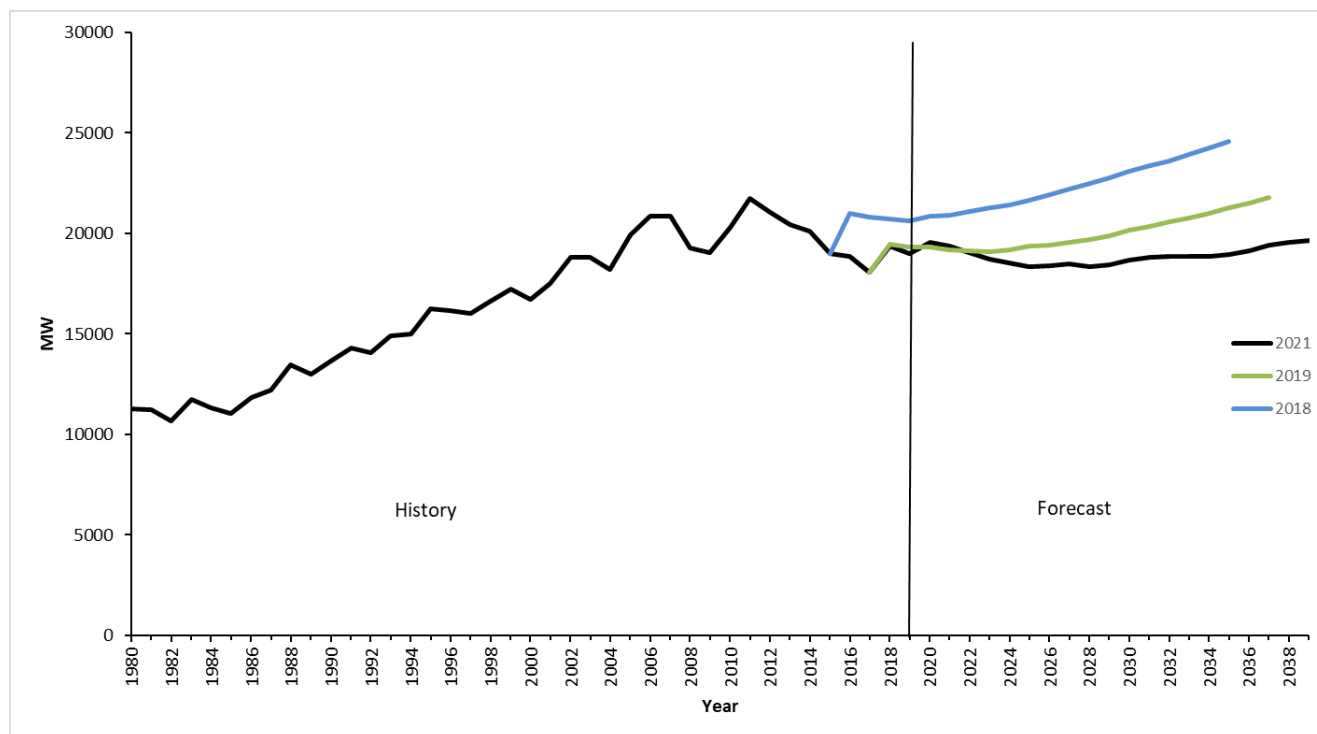
Average Compound Growth Rates (ACGR)		
Forecast	ACGR	Time Period
2021	0.21	2020-2039
2019	0.67	2018-2037
2018	0.88	2016-2035

Figure 3-1. Indiana Electricity Requirements in GWh (Historical, Current, and Previous Forecasts)



Note: See the Appendix to this report for historical and projected values.

Figure 3-2. Indiana Peak Demand Requirements in MW (Historical, Current, and Previous Forecasts)



Note: See the Appendix to this report for historical and projected values.

Table 3-2. Indiana Peak Demand Requirements Average Compound Growth Rates (Percent)

Average Compound Growth Rates (ACGR)		
Forecast	ACGR	Time Period
2021	0.02	2020-2039
2019	0.60	2018-2037
2018	0.83	2016-2035

Table 3-3. Annual Electricity Sales Growth (Percent) by Sector (Current Forecast vs. 2019 and 2018 Projections)

Sector	Current (2020-2039)	2019 (2018-2037)	2018 (2016-2035)
Residential	0.61	0.45	0.54
Commercial	-1.02	-0.10	0.38
Industrial	0.53	1.26	1.45
Total	0.21	0.67	0.88

Supply-Side Resources

SUFG's base resource plan includes all currently planned capacity changes. Planned capacity changes include: certified, rate base eligible generation additions, retirements, changes in the

2021 Indiana Electricity Projections

Chapter Three

amount of demand response that is available, and net changes in firm out-of-state purchases and sales.

SUFG does not attempt to forecast long-term out-of-state contracts other than those currently in place. Generic new generating units are added as necessary during the forecast period to maintain a 20.85 percent statewide reserve margin. This level of statewide reserves is derived from individual utility reserve margins that reflect the planning reserve requirements of the utility's regional transmission organization and the diversity of peak demand across utilities in the state. Note that the reserve margin incorporated in this forecast is higher than the 19.1 percent figure used in 2019. This is due to a re-estimation of the peak demand diversity based on more recent historical data.

Aurora can consider a variety of future supply-side and demand-side resource options. For this forecast, SUFG included utility-scale solar and wind, battery storage, natural gas-fired combustion turbines and combined cycle units, nuclear and pulverized coal. Costs and operating characteristics were taken from Energy Information Administration (EIA) and National Renewable Energy Laboratory (NREL) sources. Due to data limitations, demand-side resources were not modeled as a selectable resource option. Utility energy efficiency and demand response loads were modeled as fixed quantities based on utility-provided information.

Table 3-4 and Figure 3-3 show the statewide resource plan for the SUFG base scenario. This forecast indicates that the state does not need significant additional resources until 2026. Although new resources are not needed to meet the reserve margin requirement, the Aurora model finds it economic to add some resources prior to that. This result continues through 2028, with the reserve requirement determining resource additions afterwards. This forecast indicates a need for a mix of natural gas-fired combustion turbines and combined cycle units, with wind and solar capacity. Solar and natural gas combined cycle resources are added first. While wind resources are not added until 2030, it has the largest amount of added capacity by the end of the forecast period. In the long term, the projected additional resource requirements are generally lower than in previous forecasts. This is due to the lower projected peak demand.

While SUFG identifies resource needs in its forecasts, it does not advocate any specific means of meeting them. Required resources could be met through conservation measures, purchases from merchant generators or other utilities, construction of new facilities or some combination thereof. The best method for meeting resource requirements may vary from one utility to another.

Due to data availability restrictions at the time that SUFG prepared the modeling system to produce this forecast, the most current year with a complete set of historical data was 2019. Therefore, 2020 and 2021 numbers do not include short term purchases and any longer-term purchases of which SUFG was not aware at the time the forecast was prepared.

2021 Indiana Electricity Projections Chapter Three

Table 3-4. Indiana Resource Plan in MW (SUG Base)

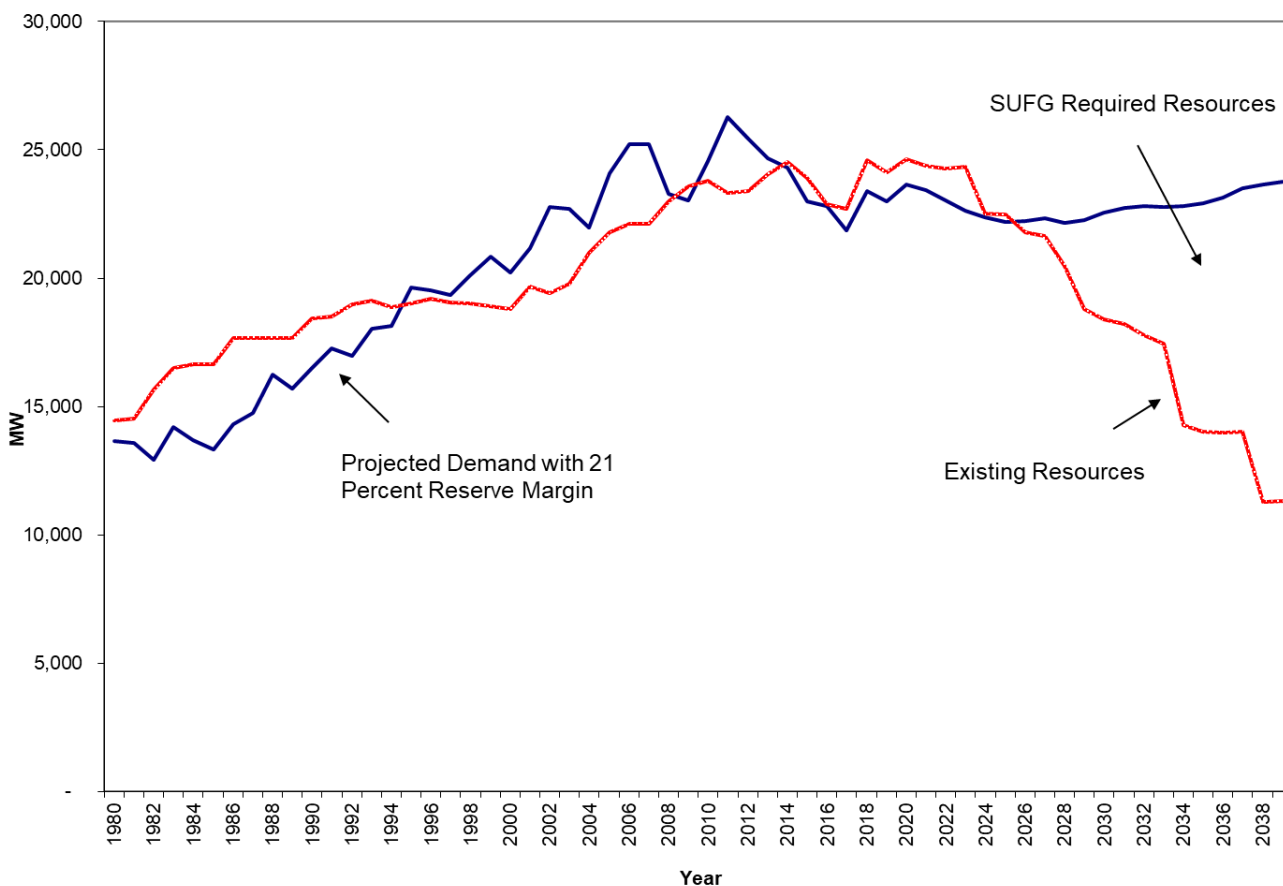
Year	Peak Demand ¹	Existing/ Approved Resources ²	Incremental Change in Resources ³	Required Additional Resources ⁴	Additional Selected Resources ⁵					Reserve Margin ⁶ (percent)
					CT	CC	Wind	Solar	Total	
2020	19,560	24,619		0	0	0	0	0	0	26
2021	19,376	24,386	-233	0	0	0	0	0	0	26
2022	19,051	24,260	-126	0	0	0	0	0	0	27
2023	18,736	24,330	70	0	0	0	0	268	268	31
2024	18,511	22,503	-1,827	0	0	835	0	268	1,103	27
2025	18,359	22,474	-30	0	0	835	0	268	1,103	28
2026	18,395	21,775	-699	455	5	1,041	0	357	1,403	25
2027	18,494	21,651	-123	699	5	1,265	0	357	1,627	25
2028	18,331	20,483	-1,168	1,669	437	2,106	0	357	2,901	26
2029	18,432	18,807	-1,676	3,468	658	2,778	0	357	3,793	21
2030	18,674	18,382	-426	4,186	793	3,153	606	565	5,117	21
2031	18,802	18,221	-161	4,501	1,104	3,153	781	565	5,603	21
2032	18,872	17,786	-435	5,020	1,407	3,296	1,739	607	7,049	21
2033	18,850	17,446	-340	5,334	1,407	3,525	3,066	607	8,605	21
2034	18,862	14,291	-3,155	8,504	3,560	3,988	3,240	2,500	13,289	21
2035	18,953	14,022	-269	8,883	3,560	4,098	3,682	3,500	14,841	21
2036	19,153	13,985	-37	9,161	3,682	4,098	3,842	4,262	15,884	21
2037	19,440	14,005	20	9,489	4,038	4,111	4,108	4,277	16,534	21
2038	19,563	11,298	-2,707	12,344	4,994	5,896	5,333	4,677	20,900	21
2039	19,650	11,330	33	12,417	4,994	5,953	6,548	4,677	22,172	21

- 1 Peak demand reflects utility-sponsored energy efficiency programs but is not adjusted for demand response loads.
2 Existing/approved resources include installed capacity plus approved new capacity plus demand response plus firm purchases minus firm sales.
3 Incremental change in resources is the change in existing/approved resources from the previous year. The change is due to new, approved capacity becoming operational, retirements of existing capacity, changes in available demand response loads, and changes in firm purchases and sales.
4 Required additional resources represent the amount of additional resources that are needed to meet the target statewide reserve margin.
5 Additional selected resources are the cumulative amount of additional resources chosen by the optimization model to meet future demand at least cost.
6 The reserve margin reflects existing and approved resources plus additional selected resources, after adjusting for the expected availability of intermittent resources at the time of peak demand.

2021 Indiana Electricity Projections

Chapter Three

Figure 3-3. Indiana Total Demand and Supply in MW (SUFG Base)



Equilibrium Price and Energy Impact

The SUFG modeling system is designed to forecast an equilibrium price that balances electricity supply and demand. This is accomplished through the cost-price-demand feedback loop, as described in Chapter 2. The impact of this feature on the forecast of electricity requirements can be significant if price changes are large.

SUFG's base scenario equilibrium real electricity price trajectory is shown in Table 3-5 and Figure 3-4. Real prices are projected to increase by 46 percent from 2019 to 2026 and then slowly increase by 0.6 percent until the end of the forecast period. The change in prices early in the forecast horizon result from a number of factors. First, there are significant capital investment in transmission, distribution, and newly approved generation that is modeled in the first few years. Also, there is a substantial amount of long-term debt that is currently scheduled to mature by 2025. While the utilities may re-finance some of that debt, SUFG does not know how much, for how long, and at what interest rate. Thus, long-term debt is modeled as being paid off by the maturation date, which likely frontloads some costs. Furthermore, the settlement of the Rockport 2 case (IURC cause 45546), which could mitigate part of the price increase, occurred after the forecast was completed. Securitization of stranded generation assets is not modeled at this time due to insufficient data.

The price increase is significant, thus the electricity requirements projection for this portion of the forecast period is affected. Since electricity prices are an input to the forecasting models, the price increases in the early years cause the projected sales to decrease. In turn, this can cause further

price increases if sales decline more than revenue requirements. This occurs during the first few years of the forecast, in part because there is little to no avoided cost of new resources in that time period since the state has enough capacity to meet the reserve requirement.

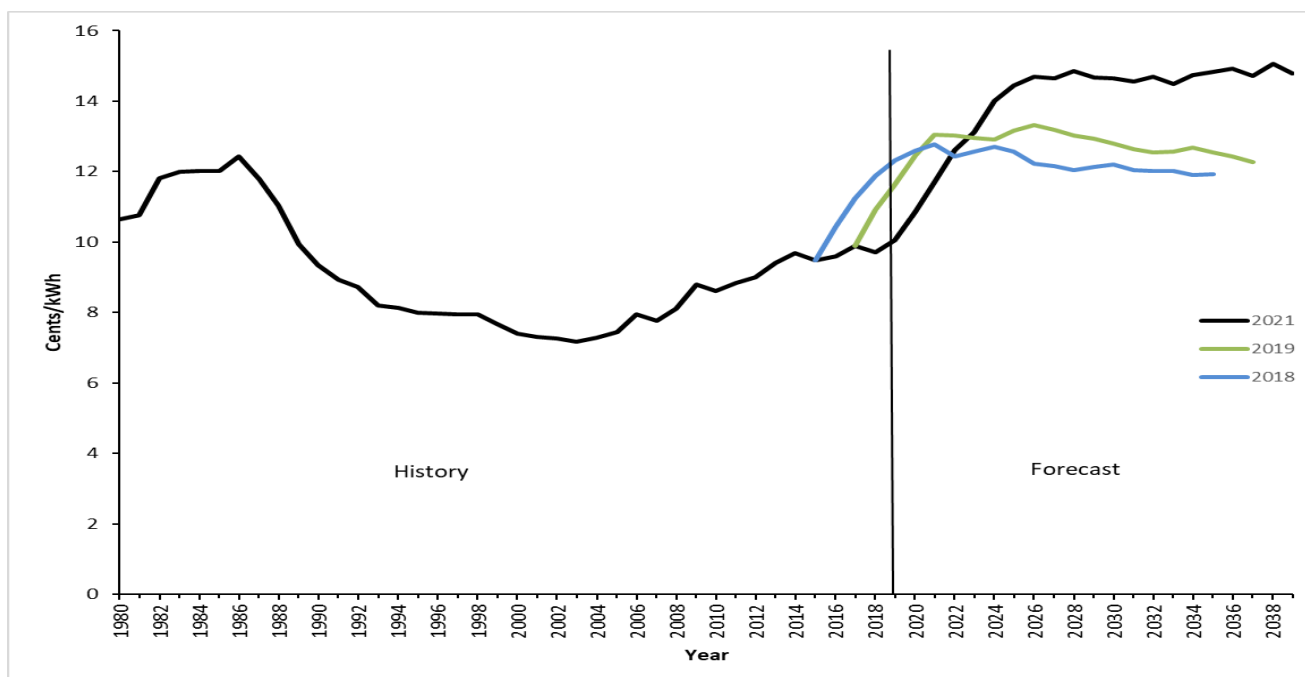
SUFG's equilibrium price projections for two previous forecasts are also shown in Table 3-5 and Figure 3-4. The price projection labeled "2018" is the base case projection contained in SUFG's 2018 forecast update and the one labeled "2019" is the base case projection from SUFG's 2019 report. For the prior price forecasts, SUFG rescaled the original price projections to 2019 dollars (from 2015 dollars for the 2018 projection, and from 2017 dollars for the 2019 projections) using the personal consumption deflator from the CEMR macroeconomic projections.

Table 3-5. Indiana Real Price Average Compound Growth Rates (Percent)

Average Compound Growth Rates (ACGR)		
Forecast	ACGR	Time Period
2021	1.64	2020-2039
2019	0.61	2018-2037
2018	0.69	2016-2035

A number of factors determine the price projections in Figure 3-4. These include costs associated with future resources required to meet future load, costs associated with continued operation of existing infrastructure, and fuel costs. Costs are included for the transmission and distribution of electricity in addition to production. Environmental rules that are in place at the time the forecast was prepared are included, while proposed and potential future rules are not.

Figure 3-4. Indiana Real Price Projections in cents/kWh (2019 Dollars) (Historical, Current, and Previous Forecasts)



Note: See the Appendix to this report for historical and projected values.

2021 Indiana Electricity Projections

Chapter Three

Low and High Scenarios

SUFG has used alternative macroeconomic scenarios, reflecting low and high growth in real personal income, population, non-manufacturing employment and gross state product. These low probability scenarios are used to indicate the forecast range, or dispersion of possible future trajectories. Tables 3-6 and 3-7 and Figures 3-5 and 3-6 provide the statewide electricity requirements and peak demand projections for the base, low and high scenarios. As shown in those figures, the annual growth rates for energy requirements for the low and high scenarios are 0.24 percent lower and 0.22 percent higher than the base scenario. These differences are due to economic growth assumptions in the scenario-based projections.

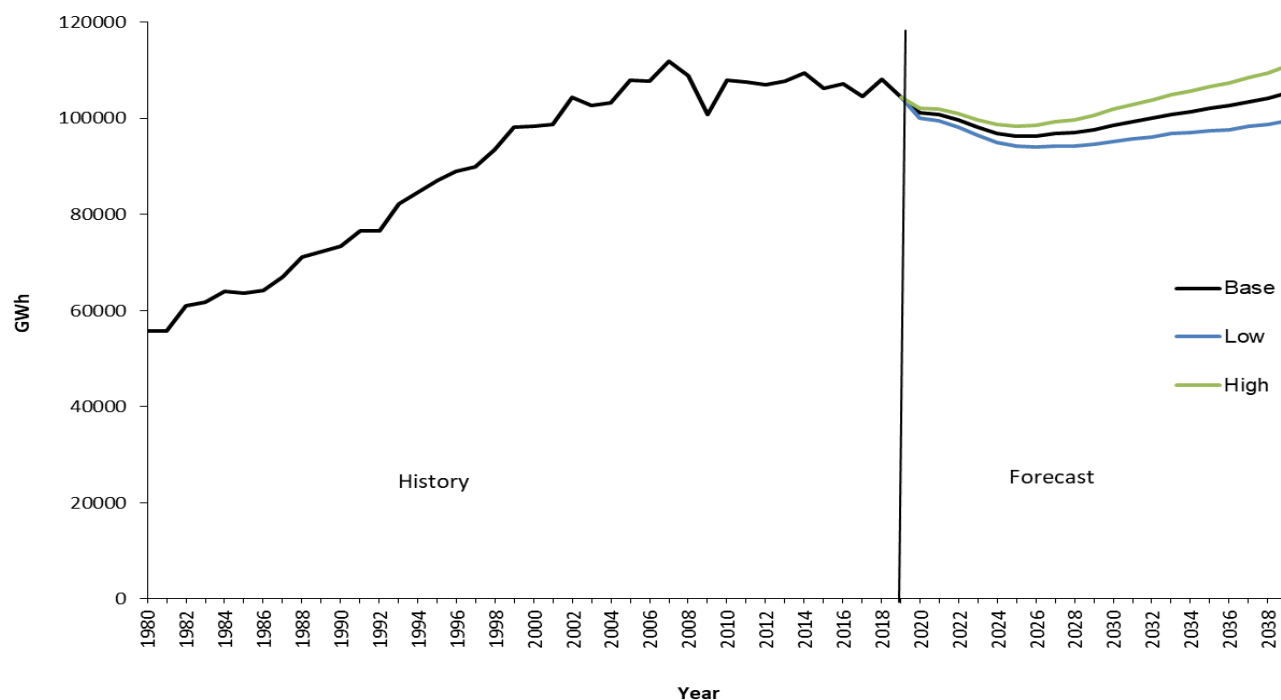
Resource and Price Implications of Low and High Scenarios

Resource plans are developed for the low and high scenarios using the same methodology as the base plan. Demand-side resources, including energy efficiency and demand response loads, are the same in all three scenarios, as are retirements of generating units. Table 3-8 shows the resources selected by the optimization model for each scenario. Approximately 26,300 MW over the horizon are added in the high scenario compared to 23,400 MW in the low scenario. By the end of the forecast period, electricity prices in both the high case and the low case are within about six percent of those projected in the base case. This is because the higher costs associated with meeting the increased load for the high case are spread over a greater amount of energy. For the low case, the lower costs are offset by the lower amount of energy.

Table 3-6. Indiana Electricity Requirements Average Compound Growth Rates by Scenario (Percent)

Average Compound Growth Rates			
Forecast Period	Base	Low	High
2020-2039	0.21	-0.03	0.43

Figure 3-5. Indiana Electricity Requirements by Scenario in GWh



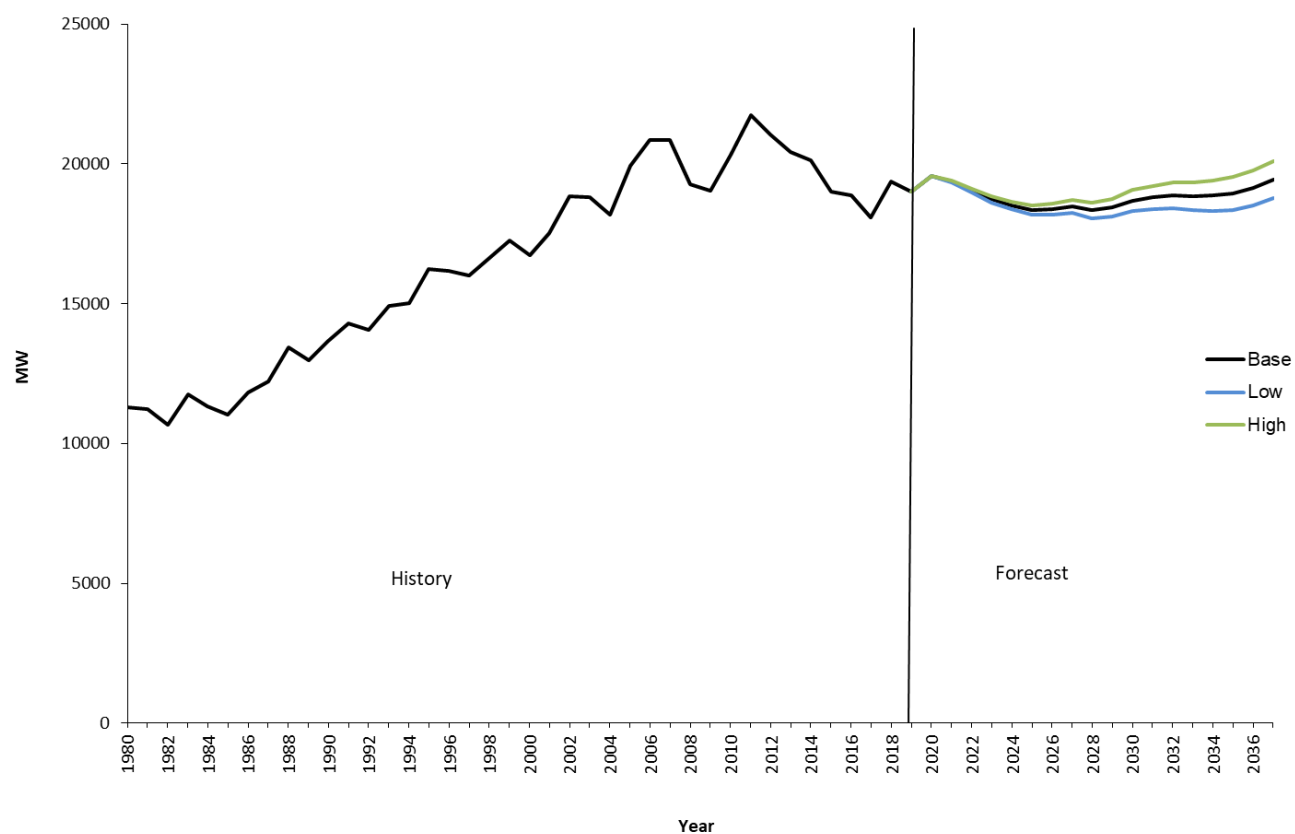
Note: See the Appendix to this report for historical and projected values.

Table 3-7. Indiana Peak Demand Requirements Average Compound Growth Rates by Scenario (Percent)

Average Compound Growth Rates			
Forecast Period	Base	Low	High
2020-2039	0.02	-0.18	0.22

2021 Indiana Electricity Projections Chapter Three

Figure 3-6. Indiana Peak Demand Requirements by Scenario in MW



Note: See the Appendix to this report for historical and projected values.

2021 Indiana Electricity Projections Chapter Three

Table 3-8. Indiana Selected Resources by Scenario in MW

Year	Base					High					Low				
	CT	CC	Wind	Solar	Total	CT	CC	Wind	Solar	Total	CT	CC	Wind	Solar	Total
2020	0	0	0	0	0	0	0	0	0	0	0	0	0	0	0
2021	0	0	0	0	0	0	0	0	0	0	0	0	0	0	0
2022	0	0	0	0	0	0	0	0	0	0	0	0	0	0	0
2023	0	0	0	268	268	0	0	0	77	77	0	0	0	152	152
2024	0	835	0	268	1,103	0	1,056	0	77	1,133	0	725	0	152	878
2025	0	835	0	268	1,103	0	1,109	0	77	1,186	0	725	0	152	878
2026	5	1,041	0	357	1,403	35	1,389	0	86	1,510	25	930	0	152	1,107
2027	5	1,265	0	357	1,627	35	1,652	0	86	1,774	25	1,111	0	152	1,288
2028	437	2,106	0	357	2,901	580	2,351	3	86	3,020	369	1,943	0	152	2,465
2029	658	2,778	0	357	3,793	712	3,153	680	86	4,632	665	2,461	0	152	3,278
2030	793	3,153	606	565	5,117	830	3,553	680	693	5,756	739	2,793	547	512	4,591
2031	1,104	3,153	781	565	5,603	1,170	3,553	801	693	6,217	982	2,793	777	565	5,117
2032	1,407	3,296	1,739	607	7,049	1,485	3,712	1,443	913	7,554	1,224	3,000	1,025	565	5,814
2033	1,407	3,525	3,066	607	8,605	1,752	3,726	2,816	913	9,206	1,361	3,049	2,316	619	7,345
2034	3,560	3,988	3,240	2,500	13,289	4,238	3,936	4,904	2,171	15,250	3,785	3,344	4,430	1,461	13,021
2035	3,560	4,098	3,682	3,500	14,841	4,238	4,053	5,565	3,288	17,145	3,785	3,425	4,430	2,466	14,106
2036	3,682	4,098	3,842	4,262	15,884	4,281	4,053	5,586	4,526	18,445	3,785	3,425	4,451	3,514	15,175
2037	4,038	4,111	4,108	4,277	16,534	4,689	4,053	5,818	4,627	19,187	4,026	3,466	4,489	3,742	15,723
2038	4,994	5,896	5,333	4,677	20,900	6,085	5,371	7,150	5,371	23,977	5,660	4,363	6,761	4,482	21,266
2039	4,994	5,953	6,548	4,677	22,172	6,085	5,400	9,399	5,371	26,255	5,660	4,363	8,937	4,482	23,442

Chapter 4

Major Forecast Inputs and Assumptions

Introduction

The models SUFG utilizes to project electric energy sales, peak demand and prices require external, or exogenous, assumptions for several key inputs. Some of these input assumptions pertain to macroeconomic indicators such as the level of economic activity, population growth and age composition for Indiana. Other assumptions include the prices of fossil fuels, which are used to generate electricity and compete with electricity to provide end-use service. Also included are assumptions related to estimated energy and peak demand reductions due to utility demand-side management programs.

This section describes SUFG's scenarios, presents the major input assumptions and provides a brief explanation of forecast uncertainty.

Macroeconomic Scenarios

The assumptions related to macroeconomic activity determine, to a large degree, the essence of SUFG's forecasts. These assumptions determine the level of various activities such as personal income, employment and manufacturing output, which in turn directly influence electricity consumption. Due to the importance of these assumptions and to illustrate forecast uncertainty, SUFG used alternative projections or scenarios of macroeconomic activity provided by the Center for Econometric Model Research (CEMR) at Indiana University.

- The *base scenario* is intended to represent the electricity forecast that is most likely and has an equal probability of being high or low.
- The *low scenario* is intended to represent a plausible lower bound on the electricity sales forecast and has a low probability of occurrence.
- The *high scenario* is intended to represent a plausible upper bound on the electricity sales forecast and also has a low probability of occurrence.

These scenarios are developed by varying the major forecast assumptions, i.e., Indiana's share of the national economy.

Economic Activity Projections

National and state economic projections are produced by CEMR twice each year. For this forecast, SUFG adopted CEMR's February 2021 economic projections as its base scenario. CEMR also produced high and low growth alternatives to the base projection for SUFG's use in the high and low scenarios.

CEMR developed these projections from its U.S. and Indiana macroeconomic models. The Indiana economic forecast is generated in two stages. First, a set of exogenous assumptions affecting the national economy are developed by CEMR and input to its model of the U.S. economy. Second, the national economic projections from this model are input to the Indiana model that translates the national projections into projections of the Indiana economy.

2021 Indiana Electricity Projections

Chapter Four

The CEMR model of the U.S. economy is a large scale quarterly econometric model. Successive versions of the model have been used for more than 35 years to generate short-term forecasts. The model has a detailed aggregate demand sector that determines output. It also has a fully specified labor market sub model. Output determines employment, which then affects the availability of labor. Labor market tightness helps determine wage rates, which, along with employment, interest rates and several other variables determine personal income. Fiscal policy variables, such as spending levels and tax rates, interact with income to determine federal, state and local budgets. Monetary policy variables interact with output and price variables to determine interest rates.

A major input to CEMR's Indiana model is a projection of total U.S. employment, which is derived from CEMR's model of the U.S. economy.

The Indiana model has four main modules. The first disaggregates total U.S. employment into manufacturing and non-manufacturing sectors. The second module then projects the share of each industry in Indiana. Additional relationships are used to project average weekly labor hours and average hourly earnings by industry. These are used with employment to calculate a total wage bill. The third module projects the remaining components of personal income. In the fourth module, labor productivity combined with employment projections is used to calculate real Gross State Product (GSP), or output, by industry.

The main exogenous assumptions in the national projections used in the CEMR forecast, as cited from "Long-Range Projections 2020-2041" [CEMR] are:

"Federal tax rates are assumed to increase over the projection period. Specifically, the average tax rate on personal income increases about 20 percent, while the payroll tax rate rises by 1.7 percent and corporate rates are assumed to increase by 45 percent. Federal grants to state and local governments are assumed to grow at a little over 4 percent over the projection period. Growth in government purchases is low. This produces a reduction in the federal government deficit from over 15 percent of GDP in 2020 to 2.3 percent at the end of the projection period. By comparison over the period 1960-1999 the deficit averaged 2.8 percent of GDP.

State and local tax rates rise by a total of 0.8 percent over the projection period. This allows these governments to have budgets that remain essentially in balance.

Real exports are assumed to grow at about 4.1 percent through the projection period. This exceeds the growth of imports, resulting in a nominal net export balance that falls from a deficit of 3.0 percent of GDP in 2020 to a surplus of 0.6 percent in 2041."

As a result of these assumptions, real GDP for the U.S. economy is projected to grow at an average annual rate of 2.45 percent and U.S. employment growth averages 0.89 percent over the 2020 to 2039 period.

In Indiana, total employment is projected to grow at a compound annual growth rate of 0.88 percent from 2020 through 2039. The key Indiana economic projections are:

Real personal income (a residential sector model driver) is expected to grow at a 1.45 percent annual rate.

Non-manufacturing employment (the commercial sector model driver) is expected to grow at a 1.11 percent annual rate over the forecast horizon.

2021 Indiana Electricity Projections Chapter Four

Despite a small decline in manufacturing employment (at a compound annual growth rate of -0.52 percent for the period of 2020-2039), manufacturing GSP (the industrial sector model driver) is expected to rise at a 1.31 percent annual rate as gains in productivity far outpace the drop in employment.

A summary comparison of CEMR's projections used in SUFG's previous and current electricity projections and historical growth rates for recent historical periods is provided in Table 4-1. It should be noted that some historical data has been revised by CEMR based on changes from federal sources, particularly the Bureau of Economic Analysis.

Table 4-1. Growth Rates for CEMR Projections of Selected Economic Activity Measures (Percent)

	Short-Run History for Selected Recent Periods					Long-Run Forecast		
						Feb 2018	Feb 2019	Feb 2021
	1990-1995	1995-2000	2000-2005	2005-2010	2010-2019	2016-2035	2018-2037	2020-2039
United States								
Real Personal Income	2.47	4.77	2.00	1.44	2.85	2.20	2.29	2.14
Total Employment	1.40	2.37	0.30	-0.56	1.64	0.84	0.83	0.89
Real Gross Domestic Product	2.57	4.32	2.58	0.90	2.27	2.42	2.40	2.45
Personal Consumer Expenditure Deflator	2.54	1.73	2.10	1.97	1.54	1.94	2.06	2.17
Indiana								
Real Personal Income	2.87	4.50	0.71	1.09	2.43	1.68	1.73	1.45
Employment								
Total Establishment	2.04	1.50	-0.28	-1.11	1.37	0.74	0.72	0.88
Manufacturing	1.47	0.35	-2.99	-4.78	2.16	-0.25	-0.57	-0.52
Non-Manufacturing	2.23	1.77	0.48	-0.04	1.14	0.91	0.95	1.11
Real Gross State Product								
Total	5.83	4.78	1.58	0.69	1.49	2.37	2.31	2.29
Manufacturing	7.95	4.68	2.00	2.34	0.62	2.83	2.01	1.31
Non-Manufacturing	4.86	4.84	1.42	0.03	1.84	2.17	2.42	2.57
Sources: SUFG Forecast Modeling System and various CEMR "Long-Range Projections"								
Note: The growth rates for manufacturing GSP and total GSP for the 2021 forecast reflect the adjustments made by SUFG to the transportation equipment industry forecast as described later in this chapter. Those adjustments were not shown in the 2018 and 2019 forecasts. The unadjusted value from CEMR for manufacturing GSP was 2.07 percent.								

To capture some of the uncertainty in energy forecasting, CEMR provided low and high growth alternatives to its base economic projection. In effect, the alternatives describe a situation in which Indiana either loses or gains shares of national industries compared to the base projection. In the high growth alternative, the Indiana average growth rate of real personal income is increased by about 0.32 percent per year (to 1.76 percent), non-manufacturing employment growth increases 0.10 percent (to 1.22 percent) while Indiana real manufacturing GSP growth is increased by 1.12 percent (to 2.56 percent). In the low growth alternative, the average growth rates of real personal income, non-manufacturing employment and real manufacturing GSP are reduced by similar amounts (to 1.14, 1.01 and 0.29 percent, respectively).

2021 Indiana Electricity Projections

Chapter Four

Demographic Projections

Household demographic projections are a major input to the residential energy forecasting model. The SUFG forecasting system includes a housing model which utilizes population and income assumptions to project households or customers.

The population projections utilized in SUFG's electricity forecasts were obtained from the Indiana Business Research Center at Indiana University (IBRC). The compound annual growth rate for IBRC population growth forecast for Indiana is 0.34 percent for the period of 2020-2040. This projection is based on the 2010 Census and includes projections of county population by age group. The fastest growing age groups are those of seniors age 65+ (1.47 percent) and school age 5-19 (0.35 percent). College age (20-24) are projected to grow at a compound annual growth rate of 0.01 percent. Older adults aged 45-64 are projected to decline at a compound annual growth rate of 0.11 percent. Population growth in total is low during the projection period because the age distribution in Indiana is skewed from young adults of childbearing age to older adults with higher mortality rates.

Indiana population growth has slowed markedly in recent years. The number of people over age 65 (the groups with fewer occupants per household) is projected to grow more rapidly than the younger population. Thus, the number of people per household is projected to decline and household formations are expected to grow more rapidly than total population.

The historical growth of household formations (number of residential customers) has slowed significantly from slightly over 2 percent during the late 1960s and early 1970s to 0.46 percent from 2009-2019. The IBRC population projection, in combination with the CEMR projection of real personal income, yields an average annual growth in households of about 1.14 percent over the forecast period.

Fossil Fuel Price Projections

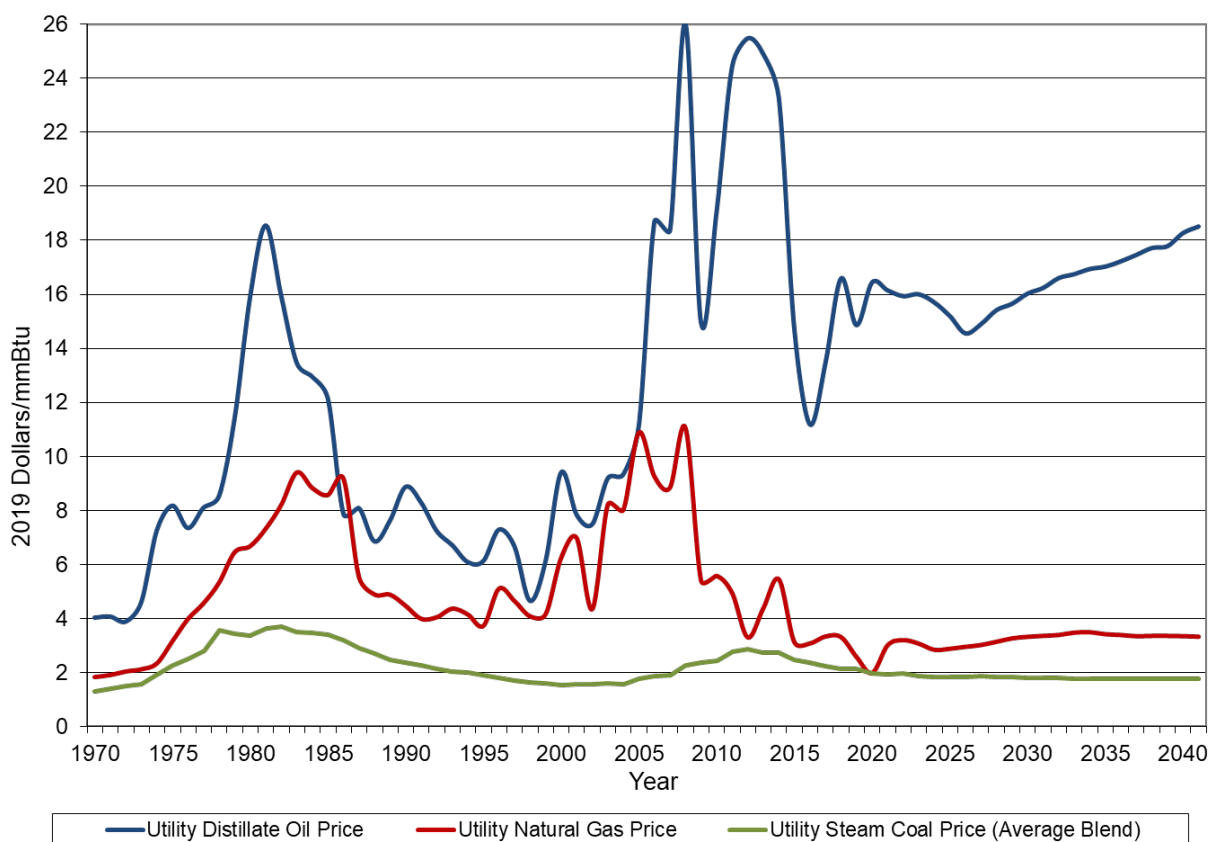
The prices of fossil fuels such as coal, natural gas and oil affect electricity demand in separate and opposing ways. To the extent that any of these fuels are used to generate electricity, they are a determinant of average electricity prices. About 47% of the state's electricity was generated from coal in 2020, while 32% was generated from natural gas [IURC]. Thus, when coal or natural gas prices increase, electricity prices in Indiana rise and electricity demand falls, all else being equal. On the other hand, fossil fuels compete directly with electricity to provide end-use services, i.e., space and water heating, process use, etc. When prices for these fuels increase, electricity becomes relatively more attractive and electricity demand tends to rise, all else being equal. As fossil fuel prices change, the impacts on electricity demand are somewhat offsetting. The net impact of these opposing forces depends on their impact on utility costs, the responsiveness of customer demand to electricity price changes, and the availability and competitiveness of fossil fuels in the end-use services markets. The SUFG modeling system is designed to simulate each of these effects as well as the dynamic interactions among all effects.

SUFG's modeling system incorporates separate fuel price projections for utility, industrial, commercial, and residential sectors. Therefore, SUFG uses four distinct natural gas price projections (one for each sector). Similarly, four distinct oil price projections are used. Coal price projections are included for the utility and industrial sectors only. In this forecast, SUFG has used February 2021 fossil fuel price projections from EIA for the East North Central Region of the U.S. [EIA]. All projections are in terms of real prices (2019 dollars/mmBtu), i.e., projections with the effects of inflation removed. The general patterns of the fossil fuel price projections are:

- Coal price projections are relatively flat in real terms throughout the entire forecast horizon as coal consumption decreases due to more natural gas and renewable generation observed in the electric power sector.
- Natural gas prices decreased significantly from 2008 to 2012. Prices then rebounded slightly in 2013 and 2014 before another dip since 2015. Natural gas price is projected to rebound to pre-pandemic level in the short run and stay relatively flat for the rest of the forecast horizon.
- Distillate prices also decreased significantly in 2009 from the high prices of 2008. Prices then rebounded significantly through 2012 before declining again in 2013, followed by substantial decreases in 2016. They rebounded quickly in 2017 and 2018. Distillate price is projected to decline till 2026, then grow steadily over the remainder of the forecast horizon.

The fossil fuel price projections for the utility sector are presented in Figure 4-1. The general trajectories for the other sectors are similar.

Figure 4-1. Utility Real Fossil Fuel Prices



Demand-Side Management, Energy Efficiency and Demand Response

Demand-side management (DSM) refers to a variety of utility-sponsored programs designed to influence customer electricity usage in ways that produce desired changes in the utility's load shape, i.e., changes in the time pattern or magnitude of a utility's load. These programs include energy conservation programs that reduce overall consumption and load shifting programs that move demand from periods of high system demand to times when overall system demand is lower. SUFG

2021 Indiana Electricity Projections

Chapter Four

considers separately the two components of DSM: energy efficiency (EE), which affects both energy and peak demand, and demand response (DR), which generally affects peak demand but has little impact on energy.

Incremental EE, which includes new programs and the expansion of existing programs, require adjustments to be made in the forecast. These adjustments are modeled within Aurora by effectively changing the utility's demand by the appropriate level of energy and peak demand for the EE program. EE programs that were in place in 2019 are considered to be embedded in the calibration data, so no adjustments are necessary.

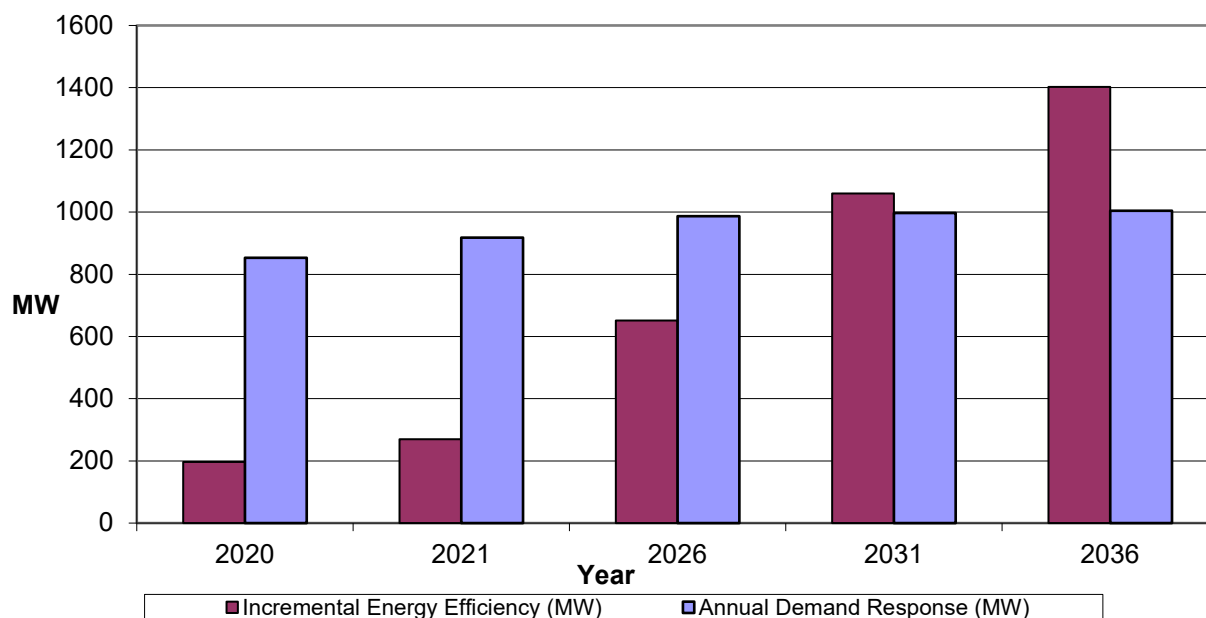
DR can include interruptible loads, where large customers curtail their demand during critical periods in exchange for more favorable rates, and direct load control, where the utility can directly turn off a customer's load for a specified amount of time. DR is typically treated differently than energy efficiency. In previous forecasts, the amount of demand response was subtracted from the utility's peak demand in order to determine the amount of new capacity required. Beginning with the 2017 forecast, demand response is modeled within Aurora as a resource instead of as an after-the-fact adjustment.

Table 4-2 shows the peak demand reductions from embedded DSM in 2019 and from incremental EE and annual DR available in 2020 in Indiana. These estimates are derived from utility integrated resource plan (IRP) filings, from utility filings with the federal Energy Information Administration (EIA) and from information collected by SUFG directly from the utilities. SUFG does not attempt to project additional DSM savings beyond those identified by the utilities at the time this report was prepared. It should be noted that SUFG does not advocate any specific means for meeting future resource requirements, with additional energy efficiency being one of the options available for meeting those requirements. Figure 4-2 shows projected values of peak demand reductions for incremental energy efficiency and demand response for 2020 and at five-year intervals starting in the year 2021. It should be noted that these numbers differ significantly than those used in previous forecasts. This forecast reflects much higher levels of utility-sponsored EE (about 1,400 MW of savings late in the forecast period as compared to about 800 MW in the 2019 forecast), while DR peak demand reductions are lower. The more aggressive DSM programs have a noticeable impact on the forecast energy use, particularly in the residential and commercial sectors.

Table 4-2. 2019 Embedded DSM and 2020 Incremental Peak Demand Reductions from Energy Efficiency and Annual Demand Response Programs (MW)

2019 Embedded DSM	2020 Incremental Energy Efficiency	2020 Annual Demand Response
1,072	197	853

Figure 4-2. Projections of Incremental Peak Demand Reductions from Energy Efficiency and Demand Response



Changes in Forecast Drivers from the 2019 Forecast

The SUFG forecast requires exogenous economic assumptions to project electric energy sales, peak demand and prices. Fluctuations in the national and state economies therefore have direct effects on the forecast. This section compares the CEMR’s projections used in SUFG’s 2019 and 2021 forecasts.

In the time between CEMR’s February 2019 (herein referred to as CEMR2019) and February 2021 (CEMR2021) long-range projections, the U.S. economy was impacted by the COVID-19 pandemic starting in early 2020. Tables 4-3 through 4-5 provide comparisons between the two projections. Selected economic variables are reported annually from 2013 through 2020 and for 2025, 2030, and the last year of the forecast period 2039. The tables show long-run projections of real values and percentage change at annual rates for non-manufacturing employment, real personal income, and total real manufacturing GSP. The tables also show the percentage change between CEMR2019 and CEMR2021. Figures 4-3 through 4-5 show long-run projections of real values for the same selected economic variables from 2013 through 2041. Some of the historical values differ between the two projections because of data revisions and the use of chain-weighted price indices and deflators.

Non-manufacturing Employment

CEMR forecasts employment at the sectoral level, separating employment into sectors for durable goods manufacturing, non-durable goods manufacturing, and non-manufacturing. Analyzing the non-manufacturing (or service) sector’s employment provides insight into Indiana’s commercial electricity demand.

Table 4-3 and Figure 4-3 show that the current CEMR projection for non-manufacturing employment is slightly lower than that in the 2019 projection.

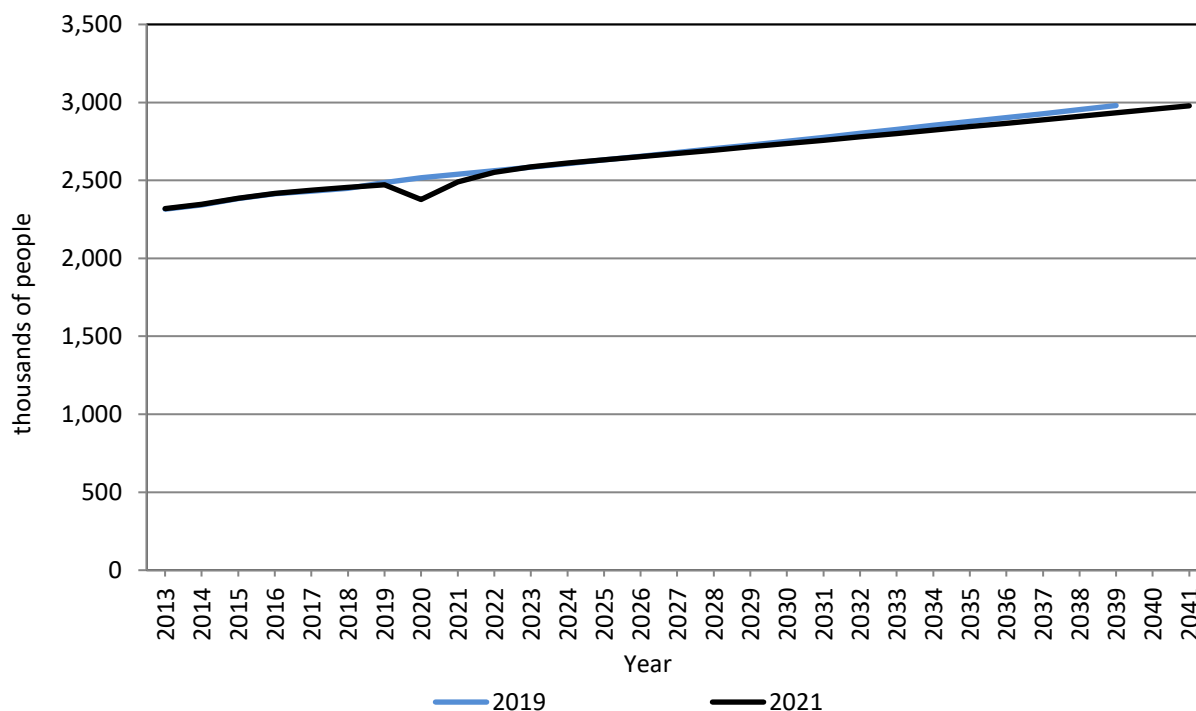
2021 Indiana Electricity Projections

Chapter Four

Table 4-3. 2019 and 2021 CEMR Projections for Indiana Non-manufacturing Employment

	Year										
	2013	2014	2015	2016	2017	2018	2019	2020	2025	2030	2039
	Thousands of persons										
CEMR 2019	2315.29 (1.20)	2342.39 (1.17)	2382.55 (1.71)	2414.14 (1.33)	2431.13 (0.70)	2448.45 (0.71)	2486.03 (1.53)	2517.19 (1.25)	2630.78 (0.90)	2750.91 (0.89)	2979.84 (0.89)
CEMR 2021	2318.89 (1.21)	2345.64 (1.15)	2385.83 (1.71)	2417.07 (1.31)	2436.19 (0.79)	2456.18 (0.82)	2472.62 (0.67)	2376.54 (-3.89)	2631.88 (0.78)	2736.48 (0.77)	2932.47 (0.77)
Percentage change between two projections	0.16	0.14	0.14	0.12	0.21	0.32	-0.54	-5.59	0.04	-0.52	-1.59
Sources: SUFG Forecast Modeling System and various CEMR "Long-Range Projections"											
Note: Numbers in parentheses indicate percentage change from the previous year of the same projection.											

Figure 4-3. Indiana Non-manufacturing Employment (thousands of people)



Real Personal Income

Real personal income provides important insight into the impacts of the economy on Indiana. Changes in real personal income will directly influence electricity demand. Real personal income is an input to the residential energy forecasting model.

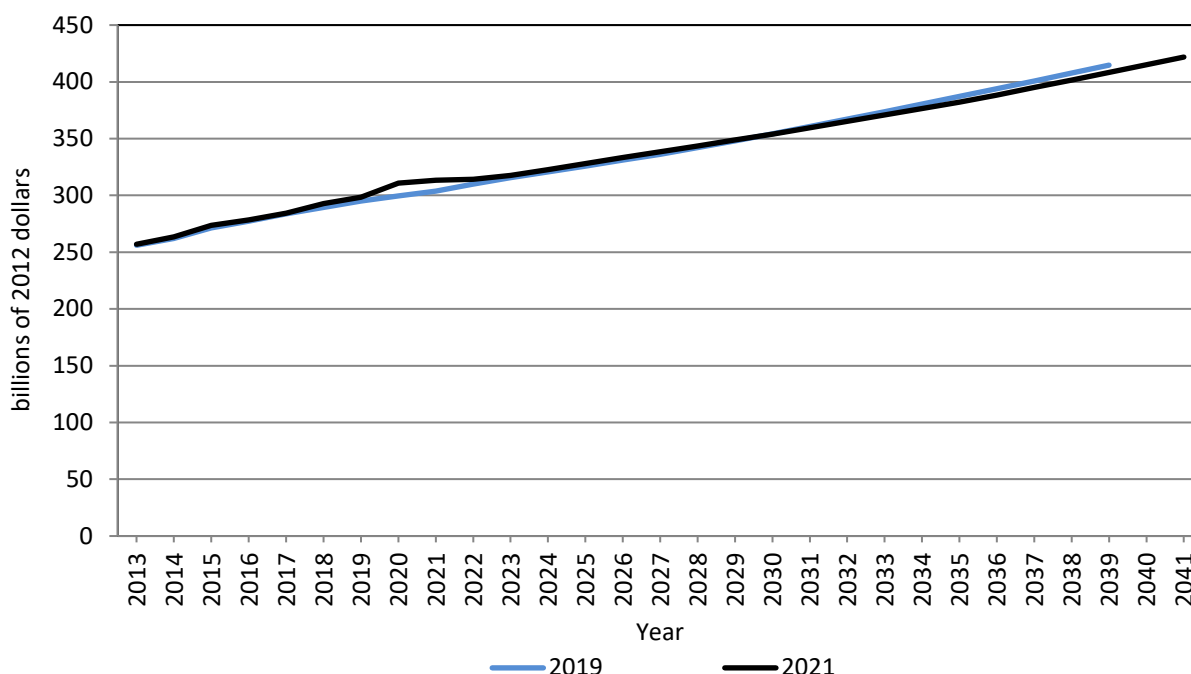
Table 4-4 and Figure 4-4 show the CEMR projections of real personal income. CEMR2021 has a slightly lower projection for real personal income in the long run, but a slightly higher projection before 2030 compared with CEMR2019. CEMR2021 indicates real personal income \$6.39 billion (1.54 percent) lower than that in CEMR2019 by the end of the forecast period.

Figure 4-4 shows that the CEMR2021 real personal income is projected to be lower than that in CEMR2019 beginning in 2030 to the end of the forecast horizon.

Table 4-4. 2019 and 2021 CEMR Projections for Indiana Real Personal Income

	Year										
	2013	2014	2015	2016	2017	2018	2019	2020	2025	2030	2039
	Billions of 2012 \$										
CEMR 2019	256.08	262.07	271.23	277.42	283.78	289.35	294.98	299.51	325.83	354.28	414.73
	(-0.06)	(2.34)	(3.49)	(2.28)	(2.29)	(1.96)	(1.95)	(1.54)	(1.61)	(1.79)	(1.73)
CEMR 2021	256.97	263.53	273.53	278.27	284.23	292.72	298.33	310.88	328.12	354.02	408.34
	(-0.07)	(2.55)	(3.79)	(1.73)	(2.14)	(2.99)	(1.92)	(4.21)	(1.67)	(1.50)	(1.67)
Percentage change between two projections	0.35	0.55	0.85	0.31	0.16	1.16	1.14	3.80	0.70	-0.07	-1.54
Sources: SUFG Forecast Modeling System and various CEMR "Long-Range Projections"											
Note: Numbers in parentheses indicate percentage change from the previous year of the same projection.											

Figure 4-4. Indiana Real Personal Income (billions of 2012 dollars)



Real Manufacturing Gross State Product

Changes in manufacturing GSP will have significant impacts on electricity use in the industrial sector. Table 4-5 and Figure 4-5 show the CEMR projections for real manufacturing GSP. As the figure illustrates, the CEMR2021 projection is slightly higher than CEMR2019 before 2036. They are almost identical for the remaining of the forecast period. The projection for 2039 is \$1.25 billion (1.06 percent) lower than that in CEMR2019.

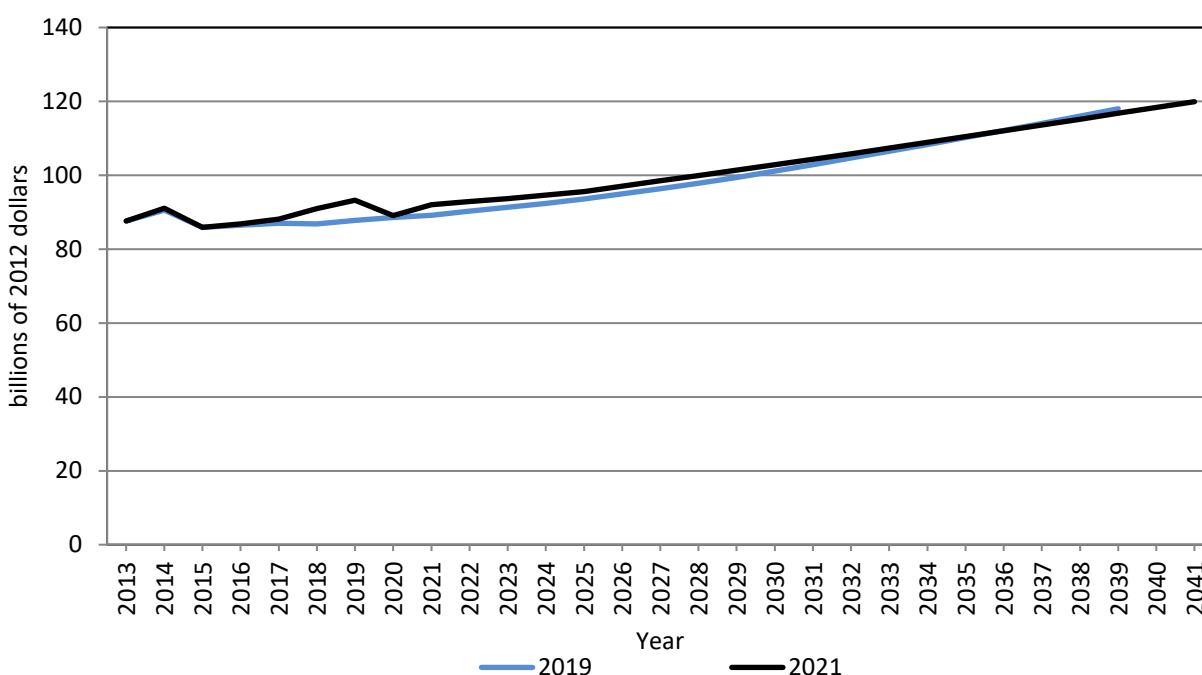
2021 Indiana Electricity Projections

Chapter Four

Table 4-5. 2019 and 2021 Adjusted CEMR Projections for Indiana Real Manufacturing GSP

	Year										
	2013	2014	2015	2016	2017	2018	2019	2020	2025	2030	2039
	Billions of 2012 \$										
CEMR 2019 Adjusted	87.59 (6.43)	90.57 (3.40)	85.91 (-5.15)	86.46 (0.64)	87.04 (0.67)	86.86 (-0.21)	87.76 (1.03)	88.58 (0.93)	93.62 (1.32)	101.13 (1.71)	118.01 (1.72)
CEMR 2021 Adjusted	87.61 (6.45)	91.11 (4.00)	85.90 (-5.71)	86.86 (1.11)	88.13 (1.47)	90.97 (3.22)	93.22 (2.47)	89.06 (-4.47)	95.60 (1.03)	102.84 (1.44)	116.76 (1.37)
Percentage change between two projections	0.02	0.59	-0.01	0.46	1.25	4.73	6.22	0.54	2.11	1.69	-1.06
Sources: SUFG Forecast Modeling System and various CEMR "Long-Range Projections" Notes: 1. Numbers in parentheses indicate percentage change from the previous year of the same projection. 2. Both projections in this table were adjusted to reflect the adjustments made by SUFG to the transportation equipment industry forecast as described later in this chapter.											

Figure 4-5. Adjusted Indiana Real Manufacturing GSP (billions of 2012 dollars)



Transportation Equipment Industry

The transportation equipment industry, including automobile and auto parts manufacturing, accounts for a large share of the total manufacturing GSP in Indiana. In 2019, this sector represented 31 percent of the total real value of products manufactured in the state.

SUFG believed that CEMR's forecast showed too much growth over the long term for this sector (as in CEMR2017 and CEMR2019 before), so the forecast was again revised. The "CEMR2021 Adjusted" projection calls for growth over the forecast period 2020-2039 of an annual compound growth rate of approximately 2.07 percent.

2021 Indiana Electricity Projections Chapter Four

Table 4-6 shows projected growth rates, actual values and percentage rate changes for the adjusted transportation equipment GSP for both CEMR2019 and CEMR 2021. The industry is projected to keep growing for the entire forecast period. However, compared with CEMR2019, CEMR2021 projects growth with a slightly faster pace. In 2039, the level forecast in CEMR2021 is 4.34 percent higher than that in CEMR2019.

Table 4-6. 2019 and 2021 Adjusted CEMR Projections for Indiana Real Transportation Equipment GSP

	Year										
	2013	2014	2015	2016	2017	2018	2019	2020	2025	2030	2039
	Billions of 2012 \$										
CEMR 2019 Adjusted	13.63 (3.23)	14.29 (4.85)	14.18 (-0.78)	14.72 (3.79)	15.00 (1.92)	15.21 (1.38)	15.49 (1.86)	15.74 (1.64)	17.11 (1.81)	18.95 (2.22)	23.21 (2.30)
CEMR 2021 Adjusted	13.63 (3.23)	14.41 (5.75)	14.55 (0.92)	15.27 (4.98)	16.16 (5.80)	16.69 (3.31)	17.10 (2.42)	16.42 (3.93)	18.32 (1.66)	20.24 (2.00)	24.22 (2.00)
Percentage change between two projections	0.00	0.85	2.58	3.76	7.71	9.76	10.36	4.32	7.08	6.81	4.34
Sources: SUFG Forecast Modeling System and various CEMR "Long-Range Projections"											
Note: Numbers in parentheses indicate percentage change from the previous year of the same projection.											

Primary Metals Industry

While the primary metals industry, including production of steel and aluminum, represented approximately 12 percent of Indiana manufacturing GSP in 2019, it accounted for 29 percent of the state's industrial electricity sales.

Table 4-7 compares the CEMR projections for 2019 and 2021 for the primary metals industry. The primary metals industry is projected to be decreasing over the forecasting period of 2020-2039. The CEMR2021 projections for the primary metals industry are slightly higher than that in the CEMR2019. In 2039, the projected GSP level for the primary metals industry in the CEMR2021 is about 1.81 percent higher than that in the CEMR2019.

Table 4-7. 2019 and 2021 CEMR Projections for Indiana Real Primary Metals GSP

	Year										
	2013	2014	2015	2016	2017	2018	2019	2020	2025	2030	2039
	Billions of 2012 \$										
CEMR 2019	10.00 (27.76)	9.37 (-6.28)	11.07 (18.18)	11.95 (7.89)	10.86 (-9.13)	10.13 (-6.68)	9.41 (-7.09)	8.64 (-8.27)	6.94 (-0.55)	6.83 (-0.17)	6.71 (-0.24)
CEMR 2021	10.00 (27.76)	9.47 (-5.25)	11.50 (21.43)	12.21 (6.14)	10.54 (-13.65)	10.79 (2.38)	11.91 (10.35)	10.93 (-8.27)	7.61 (-7.55)	7.34 (-0.74)	6.83 (-0.95)
Percentage change between two projections	0.00	1.09	3.87	2.18	-2.91	6.52	26.53	26.54	9.63	7.56	1.81
Sources: SUFG Forecast Modeling System and various CEMR "Long-Range Projections"											
Note: Numbers in parentheses indicate percentage change from the previous year of the same projection.											

2021 Indiana Electricity Projections

Chapter Four

Forecast Uncertainty

There are three sources of uncertainty in any energy forecast:

1. exogenous assumptions;
2. stochastic model error; and,
3. non-stochastic model error.

Projections of future electricity requirements are conditional on the projections of exogenous variables. Exogenous variables are those for which values must be assumed or projected by other models or methods outside the energy modeling system. These exogenous assumptions, including demographics, economic activity and fossil fuel prices, cannot be known with certainty. Thus, they represent a major, unavoidable source of uncertainty in any energy forecast.

Stochastic error is inherent in the structure of any forecasting model. Sampling error is one source of stochastic error. Each set of observations (the historical data) from which the model is estimated constitutes a sample. When one considers stochastic model error, it is implicitly assumed that the model is correctly specified and that the data is correctly measured. Under these assumptions the error between the estimated model and the true model (which is always unknown) has certain properties. The expected value of the error term is equal to zero. However, for any specific observation in the sample, the error term may be positive or negative. The errors from a number of samples follow a pattern, which is described as the normal probability distribution, or bell curve. This particular normal distribution has a zero mean, and an unknown, but estimable variance. The magnitude of the stochastic model error is directly related to the magnitude of the estimated variance of this distribution. The greater the variance, the larger the potential error will be.

In practice, virtually all models are less than perfect. Non-stochastic model error results from specification errors, measurement errors and/or use of inappropriate estimation methods. SUFG is committed to identifying and correcting potential errors in model specification, data measurement, and appropriate estimation methods.

References

Center for Econometric Model Research, “Long-Range Projections 2020-2041,” Indiana University, February 2021.

Energy Information Administration, “Annual Energy Outlook 2021,” February 2021.

Indiana Utility Regulatory Commission, “Annual Report 2021,” October 2021.

Chapter 5

Residential Electricity Sales

Overview

SUFG has two distinct models of residential electricity sales, econometric and end-use. These different modeling approaches have specific strengths and complement each other. The SUFG staff originally developed the econometric model in 1987 when it was estimated from utility specific data. Since then, it has been updated periodically. After the release of the 2007 SUFG Indiana Electricity Projections report, SUFG acquired a proprietary end-use model, Residential Energy Demand Model System (REDMS), which blends econometric and engineering methodologies to project energy use on a disaggregated basis. REDMS was obtained to replace an older residential sector end-use oriented model known as REEMS. Both end-use models are descendants of the first generation of end-use models developed at Oak Ridge National Labs (ORNL) during the late 1970s. Starting with the 2011 forecast, SUFG adopted REDMS as the primary residential sector energy model, and it is used to project residential electricity sales in this forecast. REDMS is actively supported by the vendor, Jerry Jackson Associates, with the model being re-estimated in 2020. The end-use model has been implemented for the five Indiana investor-owned utilities (IOUs) and SUFG continues to model residential energy for the not-for-profit utilities (NFPs) with an econometric approach.

SUFG chose REDMS as the primary residential sector energy projection model for three reasons. First, the SUFG econometric model divides customers into two distinct classes depending upon the space heating fuel employed: electricity and other fuels. Over time the distinction between electric space heating and natural gas (or liquefied petroleum gas) space heating has blurred due to the emergence and acceptance of hybrid systems.

Second, at least one major Indiana utility no longer offers a specific electric rate schedule to new customers that choose to use electricity for space heating. Also, at least one additional Indiana utility offers a restricted electric space heating rate which is dependent upon equipment efficiency criteria.

Third, federal law mandated lighting efficiency standards which SUFG felt were best modeled in a direct end-use context. The standards called for a 30 percent improvement in lighting efficiency beginning in 2012 with a phased in efficiency improvement of 60 percent by 2020. Econometric methods work reasonably well to capture trends in efficiency over time, but the lighting standards were more aggressive than historical equipment standards in both the level and timing of the mandated efficiency improvements. For this reason, SUFG did not feel comfortable relying on the traditional econometric energy model and chose the direct end-use modeling approach.

Historical Perspective

The growth in residential electricity consumption has generally reflected changes in economic activity, i.e., real household income, real energy prices and total households. Over time, these market factors have exhibited distinctly different trends in these market factors and in each case, residential electricity sales growth has reflected the change in market conditions.

The explosion in residential electricity sales during the decade prior to the Organization of Petroleum Exporting Countries (OPEC) oil embargo in 1974 coincided with the economic stimuli of falling prices and rising incomes. This period also was marked by a boom in the housing industry as the number of

2021 Indiana Electricity Projections

Chapter Five

residences increased. In the decade following the embargo, the growth in residential electricity sales slowed dramatically. Except for some softening in electricity prices during the late-1970s and early-1980s, real electricity prices climbed at approximately the same rate during the post-embargo era as they had fallen during the pre-embargo era. Growth in real household income was miniscule and the housing market went from boom to bust, averaging only half the growth of the pre-embargo period. This turnaround in economic conditions and electricity prices was reflected in a dramatic decline in the growth of residential electricity sales to around two percent per year as opposed to nearly nine percent previously. Events turned again during the mid-1980s. Real household income grew faster than in the pre-embargo era and real electricity prices declined. Growth in the number of households was largely unchanged and annual electricity sales increased slightly during this period.

Several market factors contributed to the small increase in sales growth between the post-embargo and more recent period. First and perhaps most importantly, is the difference in the availability and price of natural gas between the two periods. Restrictions on new natural gas hook-ups during the post-embargo period and supply uncertainty caused electricity to gain market share in major end-use markets previously dominated by natural gas, i.e., space heating and water heating. More recently, plentiful supply and falling natural gas prices through 1999 caused natural gas to recapture market share. Next in importance are equipment efficiency standards and the availability of more efficient appliances. Appliance efficiency improvement standards did not begin until late in the post-embargo era. Lastly, appliance saturations tend to grow more slowly as they approach full market saturation, and the major residential end uses are nearing full saturation.

For the early-2000s period, residential household growth decreased slightly, real electric rates continued to decline, but the growth in personal income, while positive, slowed markedly. Despite the slow growth in income, electricity sales continued to grow at roughly the rate observed during the mid-1980s to late-1990s period.

Beginning in the mid-2000s, real electricity prices increased, reversing the trend of the previous twenty years. These rising electricity prices coupled with the effects of the economic downturn and increased efficiency have resulted in much lower growth in electricity sales. Growth of the number of households slowed to about one-fourth the rate observed over the preceding twenty years. Real household income slowly increased over this period. The net effect of these changes was to reduce the electricity sales growth rate to essentially flat over the period.

The long-term impacts of the COVID-19 pandemic are uncertain at this point. In the short term, impacts on the residential electricity sales have been less significant than in other sectors of the economy. Residential electricity sales in 2020 appear to be about one percent lower than in 2019.

Model Description

The residential end-use model REDMS is the residential analogue to CEDMS, the commercial sector end-use model described in the next chapter of this report. For this reason, the description of REDMS below is nearly identical to that of CEDMS in the commercial sector chapter.

Figure 5-1 depicts the structure of the residential end-use model. As the figure shows, REDMS uses a disaggregated capital stock approach to forecast energy use. Energy use is viewed as a derived demand in which electricity and other fuels are inputs, along with energy using equipment and building envelopes, in the production of end-use services.

The disaggregation of energy demand is as important in the modeling of the residential sector as it is for modeling the commercial sector. REDMS divides residential dwellings among three dwelling types. It also divides energy use in each dwelling type among ten possible end uses, including a miscellaneous or residual use category. For end uses such as space heating, where non-electric fuels compete with electricity, REDMS further disaggregates energy use among fuel types. (This disaggregation scheme is illustrated at the top of Figure 5-1.) REDMS also divides dwellings among vintages, i.e., the year the dwelling was constructed, and simulates energy use for each vintage and dwelling type.

REDMS projects energy use for each dwelling vintage according to the following equation:

$$Q(T, i, k, l, t) = U(i, k, l, t) * e(i, k, l, t) * a(i, k, l, t) * A(l, t) * d(l, T-t)$$

where

* = multiplication operator;

T = forecast year;

Q = energy demand for fuel i, end use k, dwelling type l and vintage t in the forecast year T;

t = dwelling vintage (year);

U = utilization, relative to some base year;

e = energy use index, kWh/year or Btu/year;

a = fraction of dwelling served by fuel i, end use k, and dwelling type l for dwelling additions of vintage t;

A = dwelling additions by vintage t and dwelling type l; and

d = fraction of dwellings of vintage t still standing in forecast year T.

REDMS' central features are its explicit representation of the joint nature of decisions regarding fuel choice, efficiency choice and the level of end-use service, as well as its explicit representation of costs and energy use characteristics of available end-use technologies in these decisions.

REDMS jointly determines fuel and efficiency choices through a methodology known as discrete choice microsimulation. Essentially, sample decision-makers in the model make choices from a set of discrete equipment options. Each discrete equipment option is characterized by its fuel type, energy use and cost. REDMS uses the discrete technology choice methodology to model equipment choices for all major end-uses.

Equipment standards are easily incorporated in REDMS' equipment choice sub-models. Besides efficiency and fuel choices, REDMS also models changes in equipment utilization, or intensity of use. For equipment that has not been added or replaced in the previous year, changes in equipment utilization are modeled using fuel-specific, short-run price elasticities and changes in fuel prices.

For new equipment installed in the current year, utilization depends on both equipment efficiency and fuel price. For example, a 10 percent improvement in efficiency and a 10 percent increase in fuel prices would have offsetting effects since the total cost of producing the end-use service is unchanged.

2021 Indiana Electricity Projections Chapter Five

Figure 5-1. Structure of Residential End-Use Energy Modeling System

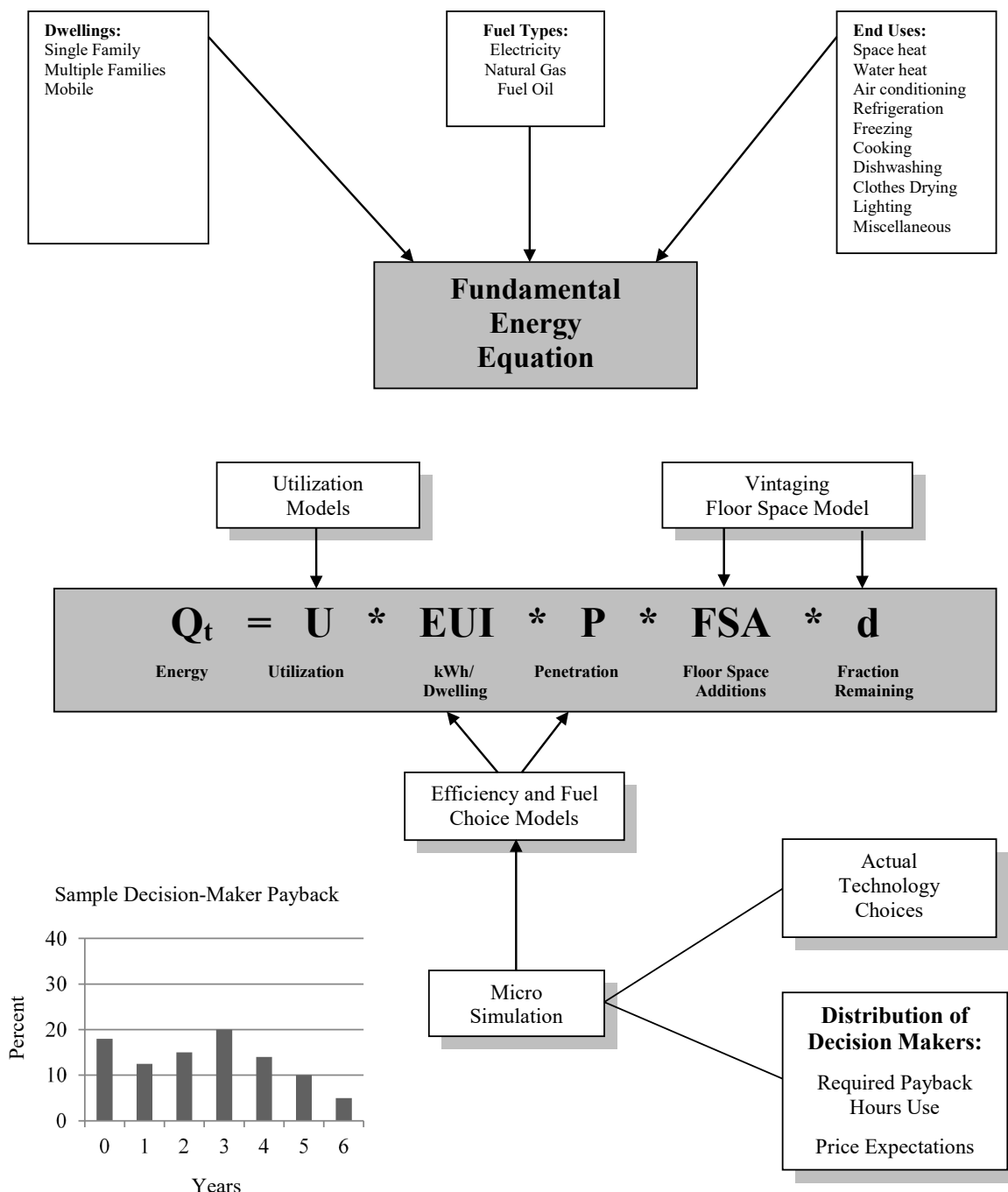


Table 5-1 provides the breakdown of the share of households in the service territories of the IOUs by type in the first column. The second column shows the share of electricity sales for the household types. The last three columns provide projected compound annual growth rates over the 2020-2039

forecast horizon for the number of households, electricity intensity as measured by annual sales per household, and growth in electricity sales.

Table 5-1. Selected Statistics for Indiana's Residential Sector (Without DSM) (Percent)

Dwelling Type	Current Share of Total Households	Current Share of Electricity Sales	Forecast Growth in Number of Households	Forecast Growth in Electricity Intensity	Forecast Growth in Electricity Sales
Single Family	78	83	1.13	-0.47	0.65
Multi-Family	18	11	1.16	-0.37	0.79
Mobile Home	4	5	1.11	-0.78	0.32
Total	100	100	1.14	-0.48	0.65

Summary of Results

The remainder of this chapter describes SUFG's current residential electricity sales projections. First, the current projection of residential sales growth is explained in terms of the model sensitivities and changes in the major explanatory variables. Next, the current base projection is compared to past base projections and then to the current high and low scenario projections. At each step, significant differences in the projections are explained in terms of the model sensitivities and changes in the major explanatory variables.

Model Sensitivities

The major economic drivers in the residential end-use model include dwellings (residential customers) and electricity prices. The sensitivity of the residential electricity use projection to changes in these variables was simulated one at a time by increasing each variable ten percent above a base scenario level and observing the change in electricity use. The results are shown in Table 5-2. Electricity consumption increases substantially due to increases in the number of customers. As expected, electricity rate increases reduce electricity consumption. Changes in natural gas prices, fuel oil prices, and personal income do not affect residential electricity consumption due in part to the structure of the model and in part due to the vendor's implementation of the model.

Competing fuels (gas and oil) could potentially affect electricity use through two mechanisms; retrofits and penetration in dwelling additions. Once an initial space heating (and subsequently water heating) fuel for a new dwelling is chosen retrofits to an alternative fuel are generally precluded due to the cost hurdle of the capital expense of switching fuels. Such a fuel choice switch would require the addition of gas service and delivery, fuel oil storage and delivery, or an electrical service upgrade and wiring upgrades. During the period used for model calibration 2009-2018, penetration for most electric end uses were very consistent, with some of the less significant ones like cooking and dishwashers increasing. Electric space heating penetration was constant at 29 percent with natural gas and LPG largely capturing the remainder. Real electricity prices increased, real natural gas prices decreased, and oil prices drifted upward with considerable volatility.

Personal income effects on fuel and efficiency choices are reflected in the decision makers' behavior through the micro-simulation modeling. On average, one would expect those decision makers facing active income or financial constraints to be the decision makers with shorter payback intervals and

2021 Indiana Electricity Projections

Chapter Five

those without such constraints to have longer payback horizons. A statistically significant relationship between end-use utilization and personal income could not be identified.

Table 5-2. Residential Model Long-Run Sensitivities

10 Percent Increase In	Causes This Percent Change in Electric Use
Number of Customers	10.6
Electric Rates	-2.5

Indiana Residential Electricity Sales Projections

Actual sales (GWh), as well as past and current projections, are shown in Table 5-3 and Figure 5-2. The growth rate for the current base projection of Indiana residential electricity sales is 0.61 percent, which is 0.16 percent higher than SUFG's 2019 projection of 0.45 percent. The historical and 2021 forecast numbers are provided in the Appendix to this report. Long-term patterns for the entire forecast horizon show that the current projection lies above both the 2018 and 2019 projections. Table 5-4 summarizes SUFG's base projections of residential electricity sales growth since 2018.

Table 5-4 breaks these projections down by the portion of the growth rate attributable to the growth in number of customers and growth in utilization per customer, with and without DSM. As the table shows, customer growth is partially offset by decreases in utilization, which is the amount of energy used per household. Use per household decreases because of increasing prices and the implementation of new efficiency standards. It can also be seen in the table that residential DSM cuts the sales growth rate by approximately one-third, reducing it from 0.92 percent to 0.61 percent.

Table 5-5 shows the growth rates of the major residential drivers for the current scenarios and the 2018 and 2019 base case. Household formation is determined by two factors. Demographic projections are the primary driver, with personal income having a smaller impact. The demographic projections in all cases are very similar. While there are some small variations in personal income among the cases, they are not large enough to result in a significant difference in growth rates for the base, low and high scenarios.

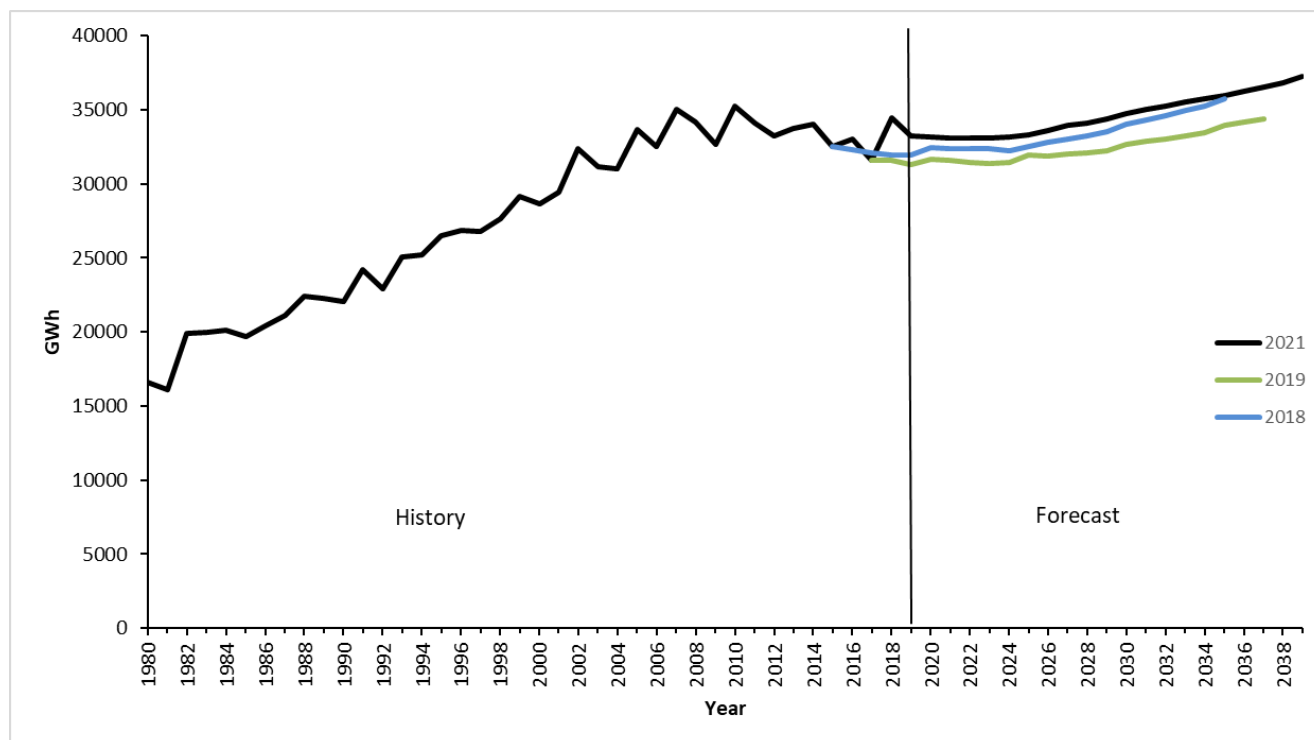
As shown in Table 5-6 and Figure 5-3, the growth rates for the high and low residential scenarios are about 0.02 percent higher and 0.04 lower, respectively, than the base scenario. This difference is due primarily to differences in the growth of household income.

Table 5-3. Indiana Residential Electricity Sales Average Compound Growth Rates (Percent)

Average Compound Growth Rates (ACGR)		
Forecast	ACGR	Time Period
2021	0.61	2020-2039
2019	0.45	2018-2037
2018	0.54	2016-2035

2021 Indiana Electricity Projections Chapter Five

Figure 5-2. Indiana Residential Electricity Sales in GWh (Historical, Current, and Previous Forecasts)



Note: See the Appendix to this report for historical and projected values.

Table 5-4. History of SUFG Residential Sector Growth Rates (Percent)

Forecast	No. of Customers	Without DSM		With DSM	
		Utilization	Sales Growth	Utilization	Sales Growth
2021 SUFG Base (2020-2039)	1.14	-0.22	0.92	-0.53	0.61
2019 SUFG Base (2018-2037)	1.09	-0.41	0.68	-0.64	0.45
2018 SUFG Base (2016-2035)	1.13	-0.41	0.72	-0.59	0.54

Table 5-5. Residential Model - Growth Rates (Percent) for Selected Variables (2021 SUFG Scenarios and 2019 and 2018 Base Forecasts)

Forecast	Current Scenarios (2020-2039)			2019 Forecast (2018-2037)	2018 Forecast (2016-2035)
	Base	Low	High	Base	Base
No. of Customers	1.14	1.13	1.14	1.09	1.13
Electric Rates	1.99	2.21	1.88	0.92	0.78

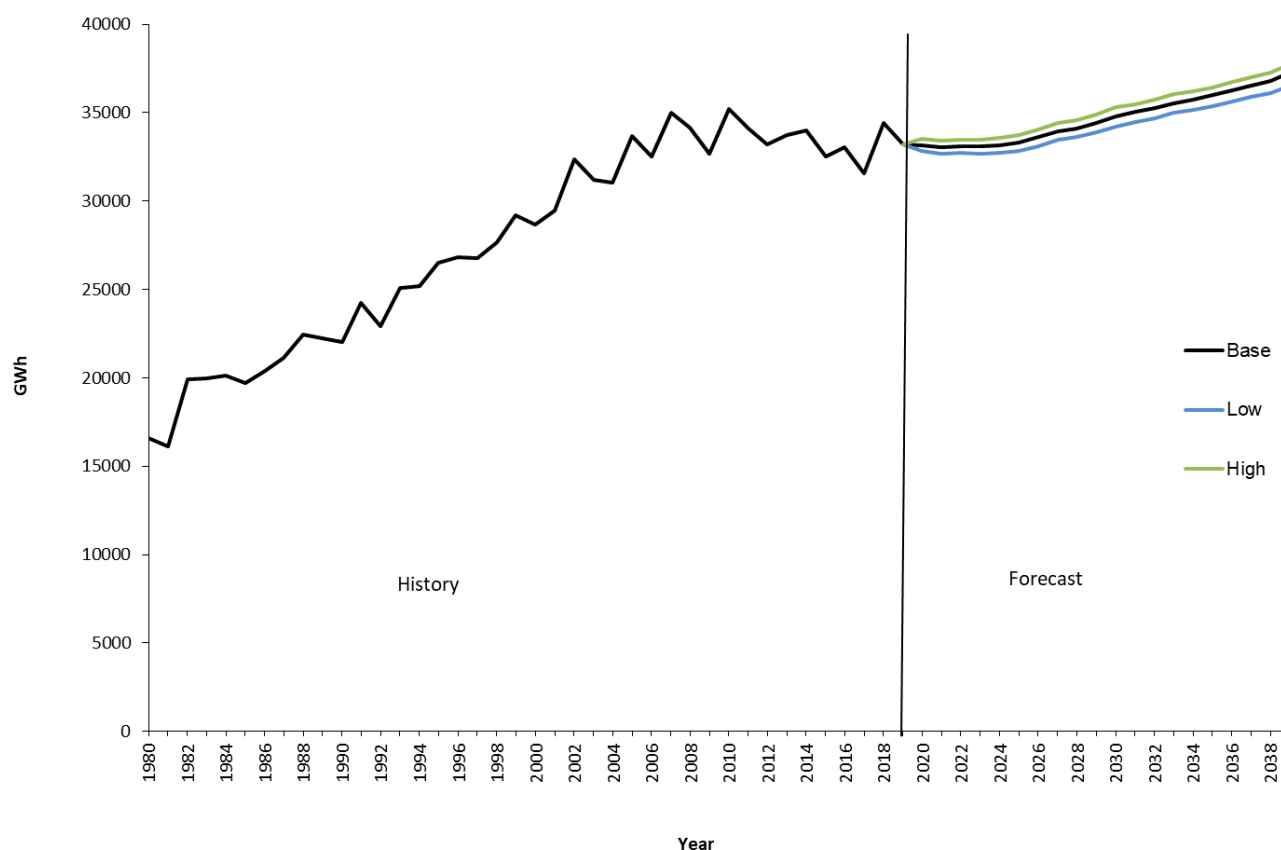
2021 Indiana Electricity Projections

Chapter Five

Table 5-6. Indiana Residential Electricity Sales Average Compound Growth Rates by Scenario (Percent)

Average Compound Growth Rates			
Forecast Period	Base	Low	High
2020-2039	0.61	0.57	0.63

Figure 5-3. Indiana Residential Electricity Sales by Scenario in GWh



Note: See the Appendix to this report for historical and projected values.

Indiana Residential Electricity Price Projections

Historical values and current projections of residential electricity prices are shown in Figure 5-4, with growth rates provided in Table 5-7. In real terms, residential electricity prices declined from the mid-1980s until 2002. Real residential electricity prices have risen since 2002 due to increases in fuel costs and the installation of new emissions control equipment. SUFG projects real residential electricity prices to rapidly rise until 2028 before leveling off and then gradually increasing afterwards, with some volatility late in the forecast period. SUFG's real price projections for most of the individual IOUs follow similar patterns as the state as a whole, but there are variations across the utilities. Historical and forecast prices are included in the Appendix to this report.

Figure 5-4. Indiana Residential Base Real Price Projections (in 2019 Dollars)

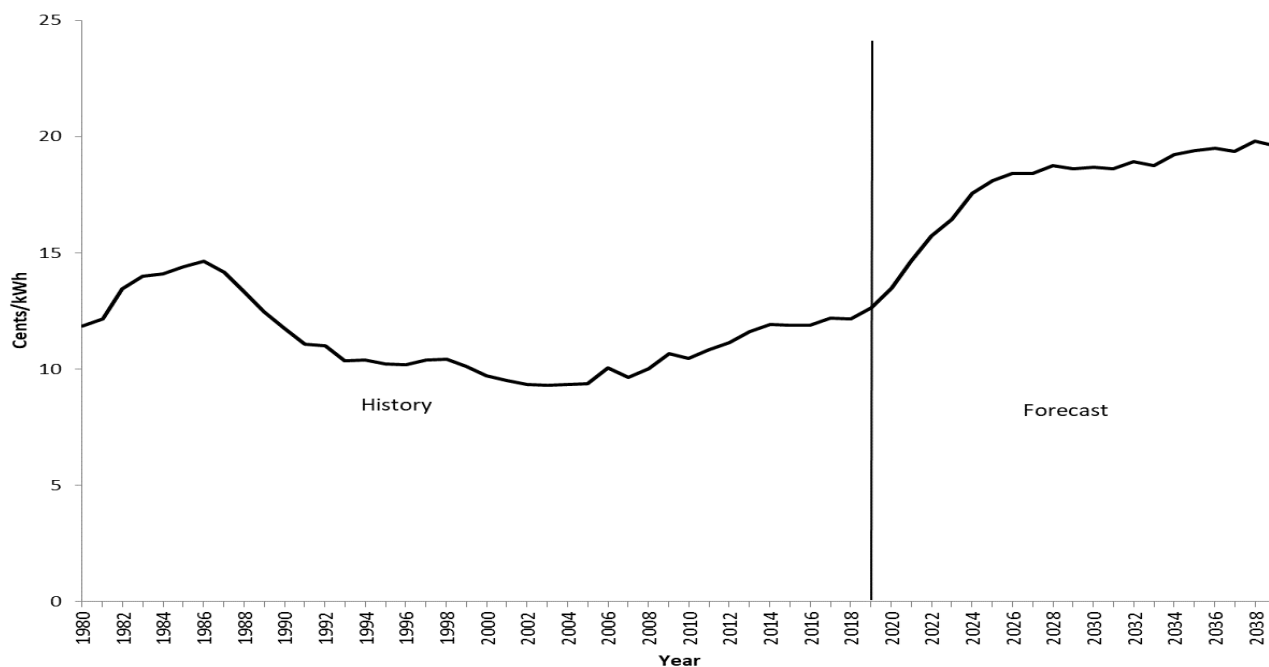


Table 5-7. Indiana Residential Base Real Price Average Compound Growth Rates (Percent)

Average Compound Growth Rates	
Selected Periods	%
1995-2000	-0.99
2000-2005	-0.72
2005-2010	2.22
2010-2015	2.61
2015-2020	2.56
2020-2025	6.08
2025-2030	0.60
2030-2035	0.76
2035-2039	0.26
2020-2039	1.99

Note: See the Appendix to this report for historical and projected values and an explanation of how SUFG arrives at these numbers.

Chapter 6

Commercial Electricity Sales

Overview

SUFG has two distinct models of commercial electricity sales, econometric and end-use. Both have specific strengths and complement each other. SUFG staff developed the econometric model and acquired a proprietary end-use model, Commercial Energy Demand Modeling System (CEDMS). CEDMS is a descendant of the first generation of end-use models developed at ORNL during the late 1970s for the Department of Energy. CEDMS, however, bears little resemblance to its ORNL ancestor. Like the residential sector end-use model REDMS, Jerry Jackson Associates actively supports CEDMS, with the model re-estimated in 2020. The end-use model has been implemented for the five Indiana investor-owned utilities (IOUs) and SUFG continues to model commercial energy for the not-for-profit utilities (NFPs) with an econometric approach.

For a few years in the mid-1990s, SUFG relied on its own econometric model to project commercial electricity sales. SUFG used the end-use model for general comparison purposes and for its structural detail. CEDMS estimates commercial floor space for building types and estimates energy use for end uses within each building type. SUFG also took advantage of the building type detail in CEDMS to construct the major economic drivers for its econometric model. SUFG then made CEDMS its primary commercial sector forecasting model for several reasons. First, based on experience with the model over several years, SUFG is confident it provides realistic energy projections under a wide range of assumptions. Second, in contrast to the significant differences between the residential end-use and econometric model projections (discussed in Chapter 5), the differences between the commercial end-use and econometric models are small, since both models forecast similar changes in electric intensity.

Historical Perspective

Historical trends in commercial sector electricity sales have been distinctly different in the most recent decades.

Changes in electric intensity, expressed as changes in electricity use per square foot (sqft) of energy-weighted floor space, arise from changes in building and equipment efficiencies as well as changes in equipment utilization, end-use saturations and new end uses. Electricity intensity increased rapidly during the era of cheap energy prior to the OPEC oil embargo. This trend was interrupted by the significant upward swing in electricity prices during the mid-1970s to mid-1980s period, which resulted in a decrease in energy intensity. As electricity prices fell again during the mid-1980s to late-1990s period, electricity intensity rose but at a slower rate than that observed during the pre-embargo period. New commercial buildings and energy-using equipment continue to be more energy-efficient than the stock average, but these efficiency improvements are offset by an increased demand for energy services.

Over the early- and mid-2000's timeframe, a decrease in economic activity stunted growth in the stock of commercial floor space, led to negative growth in intensity of electricity use, and slowed growth in electricity sales despite continued declines in real electricity prices. The 2008 economic recession coupled with increasing real electricity prices accelerated these trends, with the notable exception of the stock of commercial floor space. From the mid-2000s on, real electricity prices rose,

2021 Indiana Electricity Projections

Chapter Six

commercial floor space grew at a slightly faster rate than that observed during the previous few years, with intensity of electricity use continuing to decline and commercial sector electricity use stagnating.

The long-term impacts of the COVID-19 pandemic are uncertain at this point. In the short term, commercial electricity sales have been more severely impacted than the other sectors. Commercial electricity sales in 2020 appear to be about one percent lower than in 2019, which is well within the variance often seen due to weather differences.

Model Description

Figure 6-1 depicts the structure of the commercial end-use model. As the figure shows, CEDMS uses a disaggregated capital stock approach to forecast energy use. Energy use is viewed as a derived demand in which electricity and other fuels are inputs, along with energy using equipment and building envelopes, in the production of end-use services.

The disaggregation of energy demand is as important in the modeling of the commercial sector as it is for modeling the residential sector. CEDMS categorizes commercial buildings into 21 building types. It also divides energy use in each building type among 9 possible end uses, including a residual use category (labeled “other”). For end uses such as space heating, where non-electric fuels compete with electricity, CEDMS further disaggregates energy use among fuel types. (This disaggregation scheme is illustrated at the top of Figure 6-1.) CEDMS also divides buildings among vintages, i.e., the year the building was constructed, and simulates energy use for each vintage and building type.

CEDMS projects energy use for each building vintage according to the following equation:

$$Q(T, i, k, l, t) = U(i, k, l, t) * e(i, k, l, t) * a(i, k, l, t) * A(l, t) * d(l, T-t)$$

where

* = multiplication operator;

T = forecast year;

Q = energy demand for fuel i, end use k, building type l and vintage t in the forecast year;

t = building vintage (year);

U = utilization, relative to some base year;

e = energy use index, kWh/sqft/year or Btu/sqft/year;

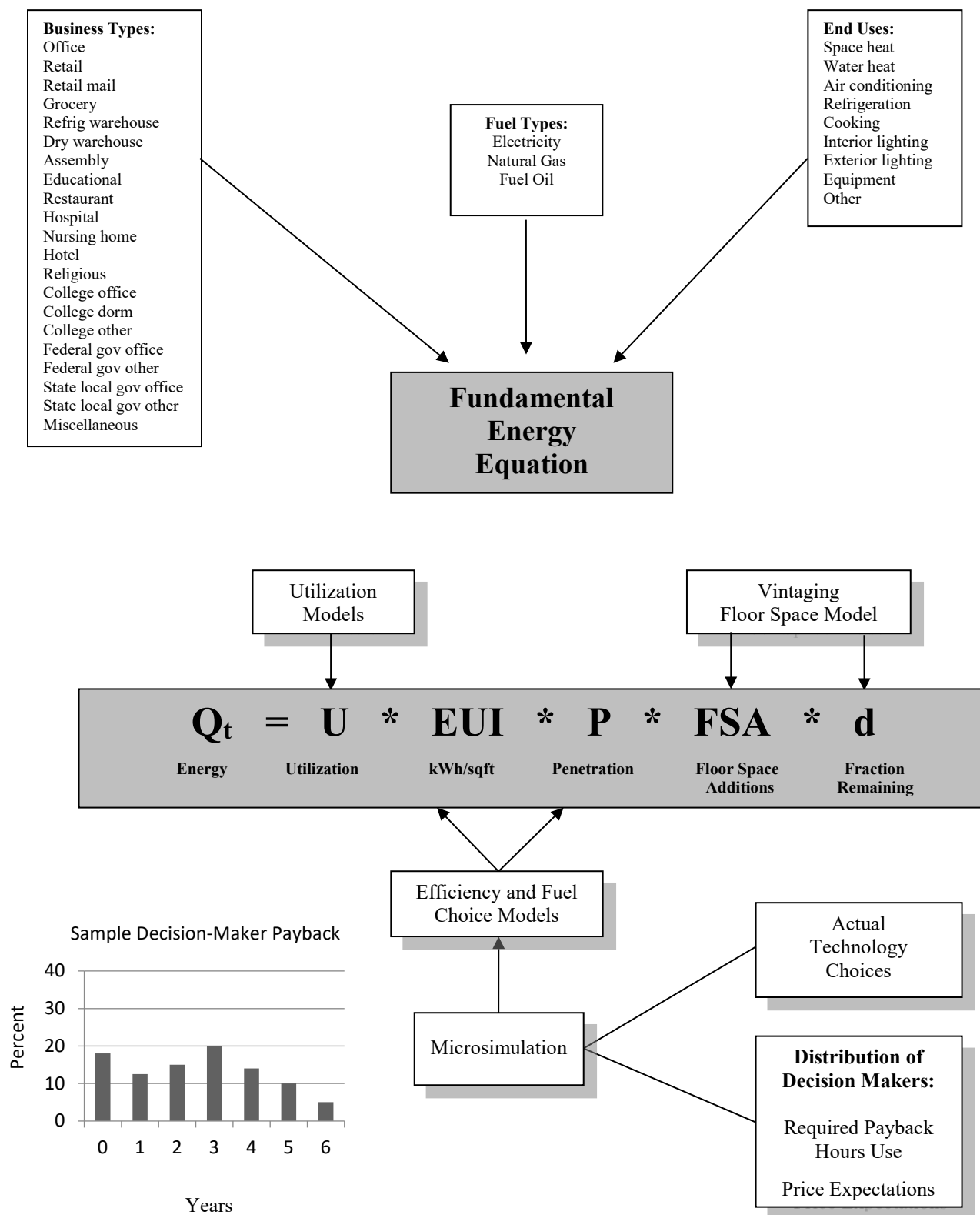
a = fraction of floor space served by fuel i, end use k, and building type l for floor space additions of vintage t;

A = floor space additions by vintage t and building type l; and

d = fraction of floor space of vintage t still standing in forecast year T.

CEDMS' central features are its explicit representation of the joint nature of decisions regarding fuel choice, efficiency choice and the level of end-use service, as well as its explicit representation of costs and energy use characteristics of available end-use technologies in these decisions.

Figure 6-1. Structure of Commercial End-Use Energy Modeling System



2021 Indiana Electricity Projections

Chapter Six

CEDMS jointly determines fuel and efficiency choices through a methodology known as discrete choice microsimulation. Essentially, sample firms in the model make choices from a set of discrete heating, ventilation and air conditioning (HVAC) equipment options. Each discrete equipment option is characterized by its fuel type, energy use and cost. CEDMS uses the discrete technology choice methodology to model equipment choices for HVAC, water heating, refrigeration and lighting. HVAC and lighting account for about 80 percent of total electricity use by commercial firms.

Equipment standards are easily incorporated in CEDMS' equipment choice sub-models. In addition to efficiency and fuel choices, CEDMS also models changes in equipment utilization, or intensity of use. For equipment that has not been added or replaced in the previous year, changes in equipment utilization are modeled using fuel-specific, short-run price elasticities and changes in fuel prices.

For new equipment installed in the current year, utilization depends on both equipment efficiency and fuel price. For example, a 10 percent improvement in efficiency and a 10 percent increase in fuel prices would offset each other since the total cost of producing the end-use service is unchanged.

Table 6-1 provides the breakdown of the share of square footage of various commercial building types in the service territories of the investor-owned utilities in the first column. The second column shows the share of electricity sales for the building types. The last three columns provide projected compound annual growth rates for the square footage, electricity intensity as measured by annual sales per square foot, and growth in electricity sales.

Table 6-1. Selected Statistics for Indiana's Commercial Sector (Without DSM) (Percent)

Building Type	Current Share of Square Footage	Current Share of Electricity Sales	Forecast Growth in Square Footage	Forecast Growth in Electricity Intensity	Forecast Growth in Electricity Sales
Office	15	15	1.49	-0.81	0.67
Retail	19	22	0.00	-1.14	-1.14
Grocery	1	4	0.00	-1.73	-1.73
Warehouse	18	7	-0.25	-1.24	-1.49
Assembly & Religious	13	9	0.59	-0.78	-0.20
Educational	10	7	2.04	-0.83	1.19
Restaurant	2	8	1.09	-1.16	-0.09
Hospital & Nursing Home	5	10	2.14	-1.29	0.82
Hotel	3	3	1.09	-0.73	0.35
College	3	3	0.33	-0.66	-0.33
Government	9	9	0.88	-0.72	0.15
Miscellaneous	1	2	0.46	-0.75	-0.29
Total	100	100	0.78	-0.88	-0.11

Summary of Results

The remainder of this chapter describes SUFG's commercial electricity sales projections. First, the current base projection of commercial sales growth is explained in terms of the model sensitivities

and changes in the major explanatory variables. Next, the current base projection is compared to past base projections and then to the current low and high scenario projections. At each step, significant differences in the projections are explained in terms of the model sensitivities and changes in the major explanatory variables.

Model Sensitivities

The major economic drivers to CEDMS include commercial floor space by building type (driven by non-manufacturing employment and population) and electricity prices. The sensitivity of the electricity sales projection to changes in these variables was simulated one at a time by increasing each variable ten percent above the base scenario levels and observing the change in commercial electricity use. The results are shown in Table 6-2. Changes in commercial floor space have a significant effect on electricity sales, while increases in electricity prices dampen sales.

Table 6-2. Commercial Model Long-Run Sensitivities

10 Percent Increase In	Causes This Percent Change in Electric Sales
Floor space	9.6
Electric Rates	-1.7

Indiana Commercial Electricity Sales Projections

Historical data as well as past and current projections are illustrated in Table 6-3 and Figure 6-2. As can be seen, the current base projection of Indiana commercial electricity sales growth declines annually by 1.02 percent. As shown in Figure 6-2, the current projection lies well below the 2018 forecast update and 2019 forecast. The current projection lies below the old projections for the whole forecast period.

Floor space growth is offset by decreases in utilization. Utilization, the amount of electricity used per unit of floor space, decreases because of increasing electricity prices, low natural gas prices and the implementation of new efficiency standards. Incremental DSM programs, which are more aggressive than in previous forecasts, have a significant effect on electricity sales.

Table 6-4 shows the growth rates for the major explanatory variables. Table 6-5 summarizes SUFG's base projections of commercial electricity sales growth for the last three SUFG projections. The historical and 2021 forecast values are provided in the Appendix to this report.

As shown in Table 6-6 and Figure 6-3, the growth rates for the low and high scenarios are about 0.12 percent lower and 0.09 percent higher than the base scenario, respectively. These differences are almost entirely due to a difference in floor space growth.

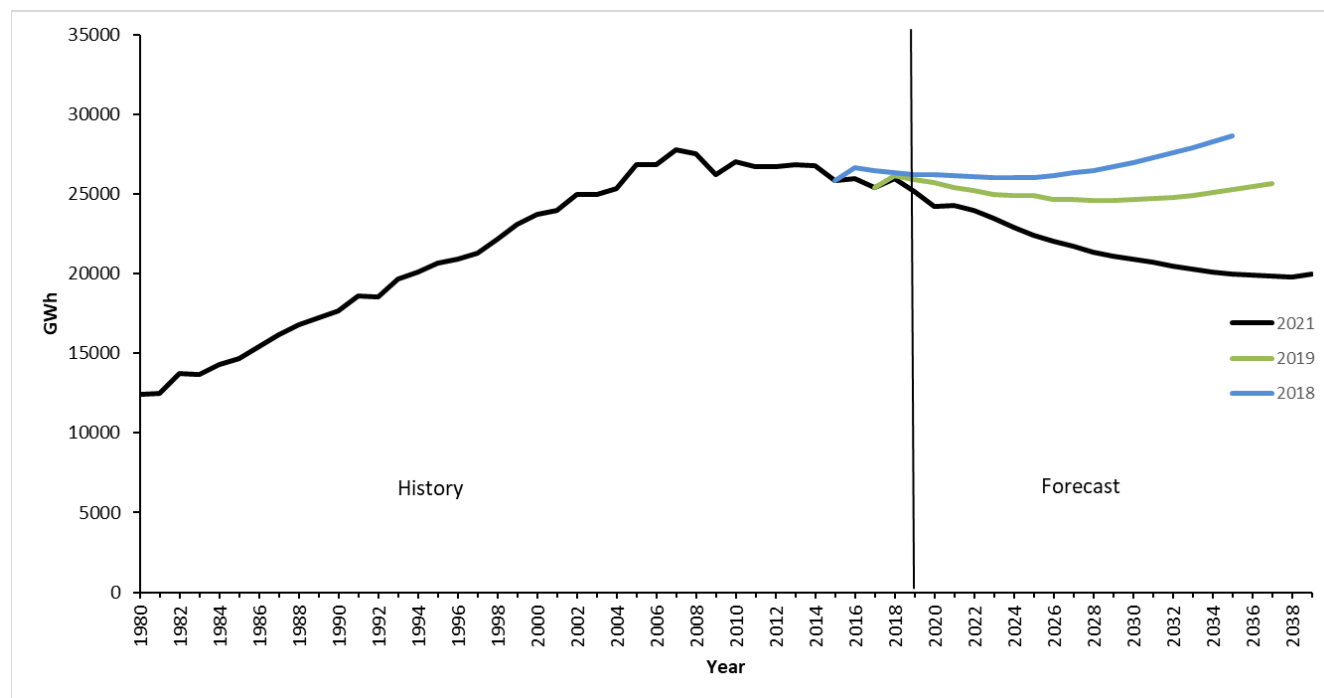
Table 6-3. Indiana Commercial Electricity Sales Average Compound Growth Rates (Percent)

Average Compound Growth Rates (ACGR)		
Forecast	ACGR	Time Period
2021	-1.02	2020-2039
2019	-0.10	2018-2037
2018	0.38	2016-2035

2021 Indiana Electricity Projections

Chapter Six

Figure 6-2. Indiana Commercial Electricity Sales in GWh (Historical, Current, and Previous Forecasts)



Note: See the Appendix to this report for historical and projected values.

Table 6-4. Commercial Model - Growth Rates (Percent) for Selected Variables (2021 SUFG Scenarios and 2019 and 2018 Base Forecasts)

Forecast	Current Scenarios (2020-2039)			2019 Forecast (2018-2037)	2018 Forecast (2016-2035)
	Base	Low	High	Base	Base
Electric Rates	1.59	1.80	1.49	0.74	0.98
Natural Gas Price	0.81	0.81	0.81	1.44	1.61
Energy-weighted Floor Space	0.90	0.82	0.98	0.78	0.80

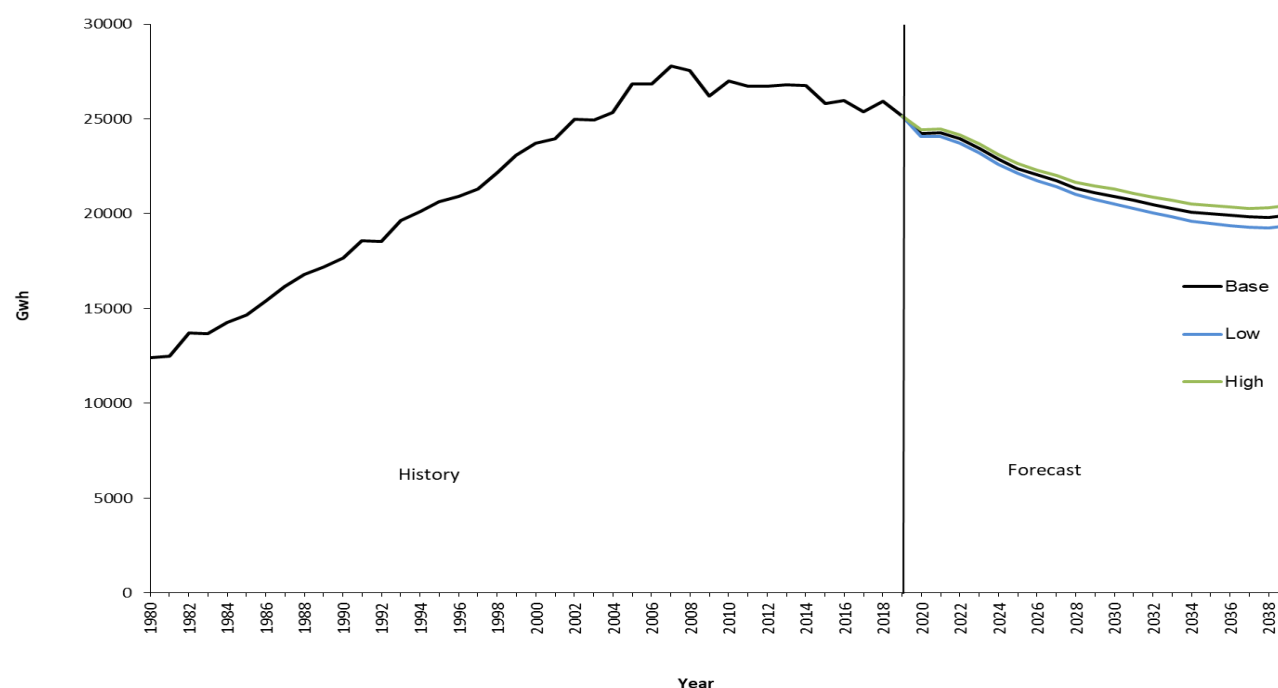
Table 6-5. History of SUFG Commercial Sector Growth Rates (Percent)

Forecast	Electric Energy-weighted Floor Space	Without DSM		With DSM	
		Utilization	Sales Growth	Utilization	Sales Growth
2021 SUFG Base (2020-2039)	0.90	-0.75	0.15	-1.92	-1.02
2019 SUFG Base (2018-2037)	0.78	-0.44	0.34	-0.88	-0.10
2018 SUFG Base (2016-2035)	0.80	-0.06	0.74	-0.42	0.38

Table 6-6. Indiana Commercial Electricity Sales Average Compound Growth Rates by Scenario (Percent)

Average Compound Growth Rates			
Forecast Period	Base	Low	High
2020-2039	-1.02	-1.14	-0.93

Figure 6-3. Indiana Commercial Electricity Sales by Scenario in GWh



Note: See the Appendix to this report for historical and projected values.

Indiana Commercial Electricity Price Projections

Historical values and current projections of commercial electricity prices are shown in Figure 6-4, with growth rates provided in Table 6-7. The historical and forecast numbers are provided in the Appendix of this report. In real terms, commercial electricity prices declined from the mid-1980s until 2002. Real commercial electricity prices have risen since 2002 due to a combination of factors, including increases in fuel costs and stagnant load growth. SUFG projects real commercial electricity prices to increase until 2028 and then level off, with some volatility late in the forecast period. SUFG's real price projections for most of the individual IOUs follow similar pattern as the state as a whole, but there are variations across the utilities. Historical and forecast prices are included in the Appendix to this report.

2021 Indiana Electricity Projections

Chapter Six

Figure 6-4. Indiana Commercial Base Real Price Projections (in 2019 Dollars)

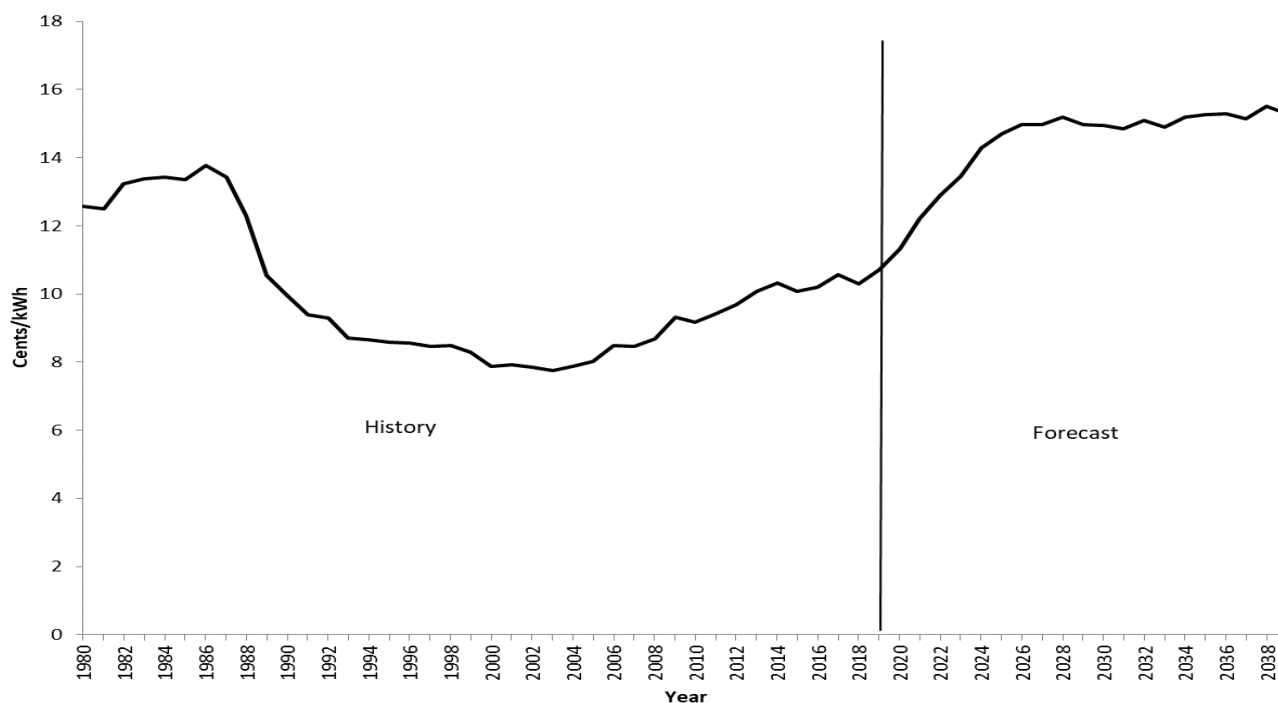


Table 6-7. Indiana Commercial Base Real Price Average Compound Growth Rates (Percent)

Average Compound Growth Rates	
Selected Periods	%
1995-2000	-1.75
2000-2005	0.36
2005-2010	2.76
2010-2015	1.87
2015-2020	2.38
2020-2025	5.35
2025-2030	0.34
2030-2035	0.41
2035-2039	0.04
2020-2039	1.59

Note: See the Appendix to this report for historical and projected values and an explanation of how SUFG arrives at these numbers.

Chapter 7

Industrial Electricity Sales

Overview

SUFG has used several models to analyze and forecast electricity use in the industrial sector. The primary forecasting model is INDEED, an econometric model developed by the Electric Power Research Institute (EPRI), which is used to model the electricity use of 15 major industry groupings in the state. Additionally, SUFG has used in various forecasts a highly detailed process model of the iron and steel industry, scenario-based models of the aluminum and foundries components of the primary metals industry, and an industrial motor drive model to evaluate and forecast the effect of motor technologies and standards.

The econometric model is calibrated at the statewide level of electricity purchases from data on cost shares obtained from the U.S. Department of Commerce Annual Survey of Manufacturers. SUFG has been using INDEED since 1992 to project electricity sales for the 15 individual industries within each of the five IOU service areas. There are many econometric formulations that can be used to forecast industrial electricity use, which range from single equation factor demand models and fuel share models to “KLEM” models (KLEM denotes capital, labor, energy and materials). INDEED is a KLEM model. A KLEM model assumes that firms act as though they are minimizing costs to produce given levels of output. Thus, a KLEM model projects the changes in the quantity of each input, which result from changes in input prices and levels of output under the cost minimization assumption. For each of the 15 industry groups, INDEED projects the quantity consumed of eight inputs: capital, labor, electricity, natural gas, distillate and residual oil, coal and materials.

Historical Perspective

SUFG distinguishes five recent periods of distinctly different economic activity for real manufacturing product, real electric rates and electric energy sales.

During the decade prior to the OPEC oil embargo, industrial electricity sales steadily increased. In Indiana as elsewhere, sales growth was driven by the combined economic stimuli of falling electricity prices and growing manufacturing output. During the decade following 1974, sales growth slowed as real electricity prices increased and the state’s manufacturing output declined. This turnaround in economic conditions and electricity prices resulted in a dramatic decline in the growth of industrial electricity sales. The fact that electricity sales increased at all is most likely attributable to increases in fossil fuel prices that occurred during the “energy crisis” between the mid-1970s and 1980s. The mid-1980s to late-1990s period, experienced another dramatic turnaround. The growth rate of industrial output once again increased, and was substantially above the annual growth rate observed during the pre-embargo era. Real electricity prices in Indiana continued to decline in the industrial sector. These conditions caused electricity sales to grow moderately during this period.

The effect of the economic slowdown from late-1990s to mid-2000s was particularly pronounced in the industrial sector. During this period, real industrial electricity prices declined, but this decline was partially offset by a moderate growth in manufacturing output, resulting in stagnant growth in industrial electricity use. Since the mid-2000s real industrial electricity prices have increased, real growth in manufacturing output has continued to be modest, and overall growth in industrial electricity sales has remained stagnant.

2021 Indiana Electricity Projections

Chapter Seven

The long-term impacts of the COVID-19 pandemic are uncertain at this point. In the short term, impacts on the industrial electricity sales have been quite significant, with sales in 2020 about 5.5 percent lower than in 2019.

Model Description

SUFG's primary industrial-sector forecasting model, INDEED, consists of a set of econometric models for each of Indiana's major industries listed in Table 7-1. The general structure of the models is illustrated in Figure 7-2.

Each model is driven by projections of GSP for selected industries over the forecast horizon provided by CEMR. Each industry's share of GSP is given in the first column of Table 7-1. Seventy-three percent of state GSP is accounted for by the following industries: primary metals, 12 percent; fabricated metals, 5 percent; industrial machinery and equipment, 8 percent; chemicals, 12 percent; transportation equipment, 31 percent; and electronic and electric equipment, 5 percent.

The share of total electricity consumed by each industry is shown in the second column of Table 7-1. Both the chemicals and primary metals industries are very electric-intensive industries. Combined, they account for almost half of total state industrial electricity use. Column four gives the current base output projections for the major industries derived from the most recent CEMR forecast (after the adjustment to the transportation equipment industry discussed in Chapter 4). As explained in Chapter 4, CEMR projections are developed using econometric models of the U.S. and Indiana economies. Manufacturing sector GSP projections are obtained by multiplying sector employment projections by a projection of GSP per employee, a measure of labor productivity.

This is the ninth SUFG forecast developed since CEMR switched from the Standard Industrial Classification (SIC) system to the newer North American Industry Classification System (NAICS) for categorization of industrial economic activity. Generally, the NAICS is more detailed than the SIC system. Since SUFG is still using the SIC system, SUFG maps industrial economic activity projections from the NAICS measures used by CEMR to the older SIC measures used in SUFG's models. This process was relatively straightforward with the exception of SIC 28, chemical manufacturing. In SIC 28, chemical manufacturing, SUFG used the CEMR GSP growth projections for the manufacturing sector as a whole. This was necessary because CEMR's projections did not specifically include chemicals manufacturing, a large purchaser of electricity in Indiana.

Each industrial sector econometric model forecasts the total cost of producing the given output and the cost shares for each major input, i.e., capital, labor, electricity, gas, oil, coal and materials. The quantity of electricity is determined given the expenditure of electricity for each industry and its price.

As described earlier in this chapter, INDEED captures the competition between the various inputs for their share of the cost of production by assuming firms seek the mix of inputs that minimizes the production cost for a given level of output. Unit costs of natural gas, oil, coal, capital, labor and materials are inputs to the SUFG system, while the cost per kWh of electricity is determined by the SUFG modeling system. For fuel prices, SUFG uses the current EIA forecast, which assumes that real natural gas prices will gradually rise over the first decade of the forecast horizon before leveling off. Distillate prices are projected to decrease through 2026 before growing steadily over the remainder of the forecast horizon. Unit costs for capital, labor and materials are consistent with the assumptions contained in the CEMR forecast of Indiana output growth. The changes in electricity intensities, expressed as a percent change in kWh per dollar of GSP, are shown in column five of Table 7-1.

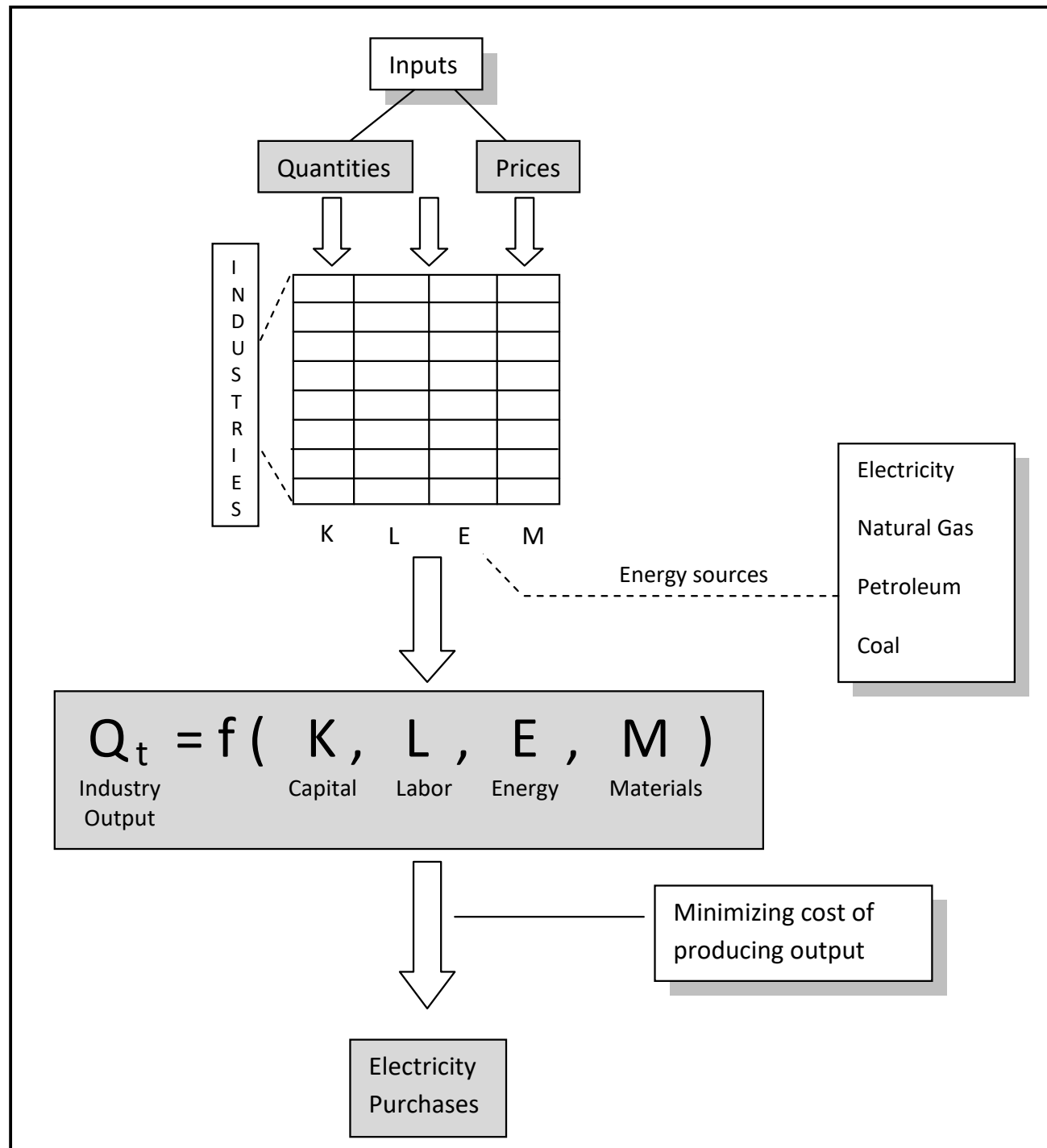
2021 Indiana Electricity Projections Chapter Seven

The last column of Table 7-1 contains the projected annual percent increase in electricity sales by major industry. This projected increase is the sum of changes in GSP and kWh/GSP for each industry. Average industrial electricity use across all sectors in the base scenario is expected to increase at an average of 0.53 percent per year, without DSM, over the forecast horizon.

Table 7-1. Selected Statistics for Indiana's Industrial Sector (Without DSM) (Percent)

SIC	Name	Current Share of GSP	Current Share of Electricity Sales	Current Intensity	Forecast Growth in GSP Originating by Sector	Forecast Growth in Electricity Intensity by Sector	Forecast Growth in Electricity Sales by Sector
20	Food & Kindred Products	3.44	6.74	0.67	1.44	-1.38	0.06
21	Tobacco Products	0.001	0.03	6.59	1.44	-1.44	0.001
22	Textile Mill Products	0.06	0.09	0.50	1.44	-1.92	-0.48
23	Apparel & Other Textile Products	0.41	0.09	0.07	1.44	-1.28	0.15
24	Lumber & Wood Products	1.91	0.64	0.11	1.44	-0.73	0.71
25	Furniture & Fixtures	2.82	0.38	0.05	1.92	-1.12	0.79
26	Paper & Allied Products	1.33	3.40	0.87	1.44	-0.98	0.46
27	Printing & Publishing	2.51	1.01	0.14	1.44	-1.31	0.13
28	Chemicals & Allied Products	11.95	20.48	0.58	1.44	-1.21	0.22
29	Petroleum & Coal Products	3.44	5.47	0.54	1.44	0.00	1.44
30	Rubber & Misc. Plastic Products	3.23	5.73	0.61	2.42	-1.22	1.20
31	Leather & Leather Products	0.08	0.01	0.04	1.92	-3.11	-1.19
32	Stone, Clay, & Glass Products	2.86	5.27	0.63	1.92	-1.32	0.60
33	Primary Metal Products	11.81	28.55	0.82	-2.44	2.12	-0.32
34	Fabricated Metal Products	5.26	6.32	0.41	1.48	-1.12	0.21
35	Industrial Machinery & Equipment	7.61	4.32	0.19	0.92	-0.94	-0.02
36	Electronic & Electric Equipment	4.54	1.90	0.14	-0.43	-0.90	-1.32
37	Transportation Equipment	30.81	7.44	0.08	2.08	-1.12	0.88
38	Instruments & Related Products	3.84	1.12	0.10	1.92	-1.14	0.78
39	Miscellaneous Manufacturing	2.08	1.01	0.17	1.92	-3.27	-1.36
Total	Manufacturing	100.00	100.00	0.34	1.31	-0.78	0.53

Figure 7-2. Structure of Industrial Energy Modeling System



Summary of Results

The remainder of this chapter describes SUFG's industrial electricity sales projections. First, the current base projection of industrial sales growth is explained in terms of the model sensitivities and changes in the major explanatory variables. Next, the current base projection is compared to past

base projections and then to the current low and high scenario projections. At each step, significant differences in the projections are explained in terms of the model sensitivities and changes in the major explanatory variables.

Model Sensitivities

Table 7-2 shows the impact of a 10 percent increase in each of the model inputs on all industrial electricity consumption in the econometric model. Electricity sales (GWh) are most sensitive to changes in output and electric rates, somewhat sensitive to changes in gas and oil prices, and insensitive to changes in assumed coal prices. Other major variables affecting industrial electricity use include the prices of materials, capital and labor. The model's sensitivities were determined by increasing each variable ten percent above the base scenario levels and observing the percent change in forecast industrial electricity use after 10 years.

Table 7-2. Industrial Model Long-Run Sensitivities

A 10 Percent Increase In	Causes This Percent Change in Electric Sales
Real Manufacturing Product	10.0
Electric Rates	-4.8
Natural Gas Price	1.4
Oil Prices	0.9
Coal Prices	0.2

Indiana Industrial Electricity Sales Projections

Past and current projections for industrial energy sales as well as overall annual average growth rates for the current and past forecasts are shown in Table 7-3 and Figure 7-3. Historical and forecast values are provided in the Appendix to this report.

The impact of industrial sector DSM programs on growth rates for the 2018, 2019, and current forecasts is displayed in Table 7-4. The table also disaggregates the impact on energy growth of output, changes in the mix of output and electricity intensity. Industrial sector DSM programs are expected to have negligible impact on retail sales, due in part to industrial customers having the ability to opt out. The effect of earlier conservation activities is embedded in the historical data and SUFG's projections.

The current forecast projects that industrial sector electricity sales will grow from the 2020 level of approximately 36,100 GWh to about 39,900 GWh by 2039. This growth rate of 0.53 percent per year is substantially higher than the -1.02 percent rate projected for the commercial sector and slightly lower than the 0.61 percent rate projected for the residential sector. As shown in Figure 7-3, the current forecast shows a decline through 2025, then increases through the remainder of the forecast horizon. The early decline is driven by projected increases in electricity prices in those years.

As compared to the previous forecasts, the growth in industrial electricity sales is impacted by two counterbalancing factors: manufacturing output and electricity intensity (electricity usage per dollar of output). While the projected growth in manufacturing output is only slightly lower than in the previous forecast (1.31 percent per year vs. 1.35 percent), the electricity intensity is significantly lower (-0.78 percent per year vs. -0.09 percent). Thus, the growth in industrial sales is more modest in this forecast than in previous ones.

2021 Indiana Electricity Projections

Chapter Seven

Table 7-5 and Figure 7-4 show how industrial electricity sales differ by scenario. In the high scenario, industrial sales are expected to increase to 44,177 GWh by 2039, 10.7 percent higher than the base projection. In the low scenario, industrial sales grow more slowly, which results in 35,871 GWh by 2039, 10.1 percent below the base scenario.

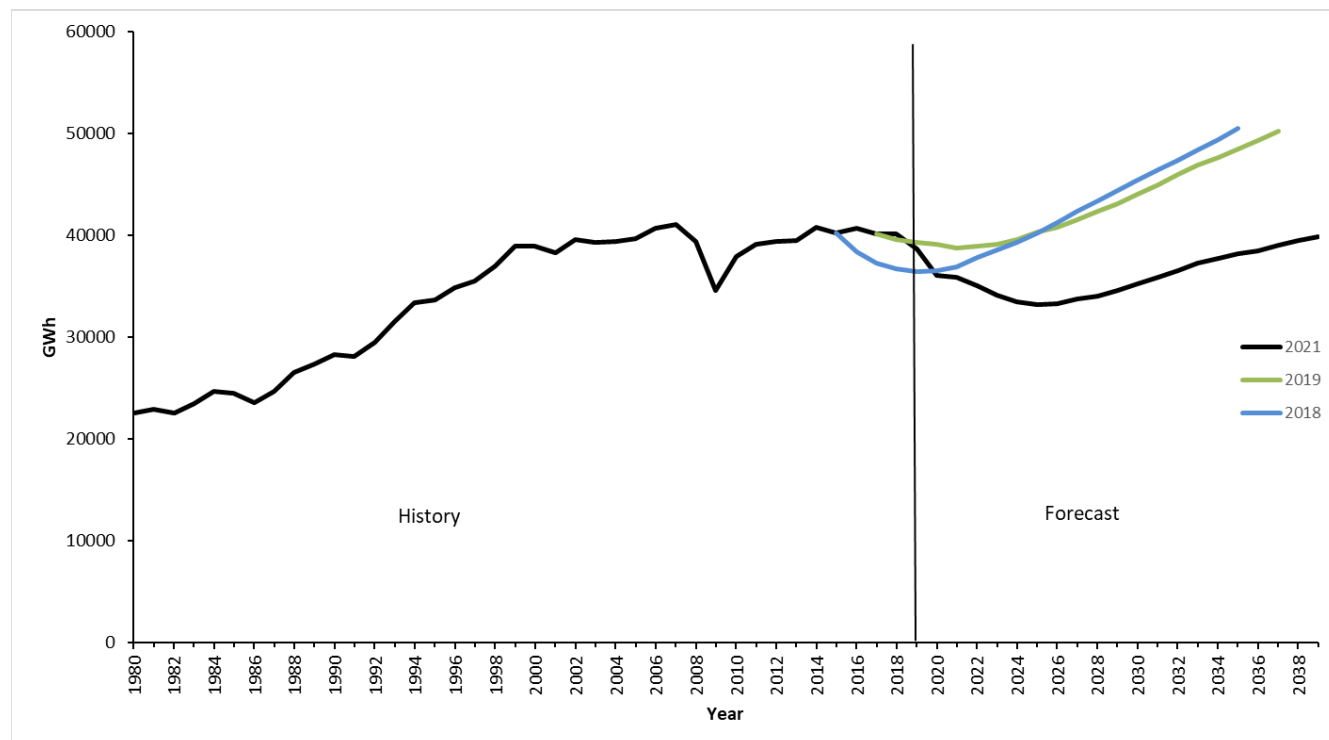
The wide range of forecast sales is caused primarily by the equally wide range of the trajectories of industrial output contained in the CEMR low and high scenarios for the state. In the base scenario GSP in the industrial sector grows 1.31 percent per year during the forecast period. That rate is 1.98 percent in the high scenario and 0.65 percent in the low scenario. This reflects the uncertainty regarding Indiana's industrial future contained in these forecasts.

The high and low scenarios reflect optimistic and pessimistic views, respectively, regarding the ability of Indiana's industries to compete with producers from other states.

Table 7-3. Indiana Industrial Electricity Sales Average Compound Growth Rates (Percent)

Average Compound Growth Rates (ACGR)		
Forecast	ACGR	Time Period
2021	0.53	2020-2039
2019	1.26	2018-2037
2018	1.45	2016-2035

Figure 7-3. Indiana Industrial Electricity Sales in GWh (Historical, Current, and Previous Forecasts)



Note: See the Appendix to this report for historical and projected values.

2021 Indiana Electricity Projections Chapter Seven

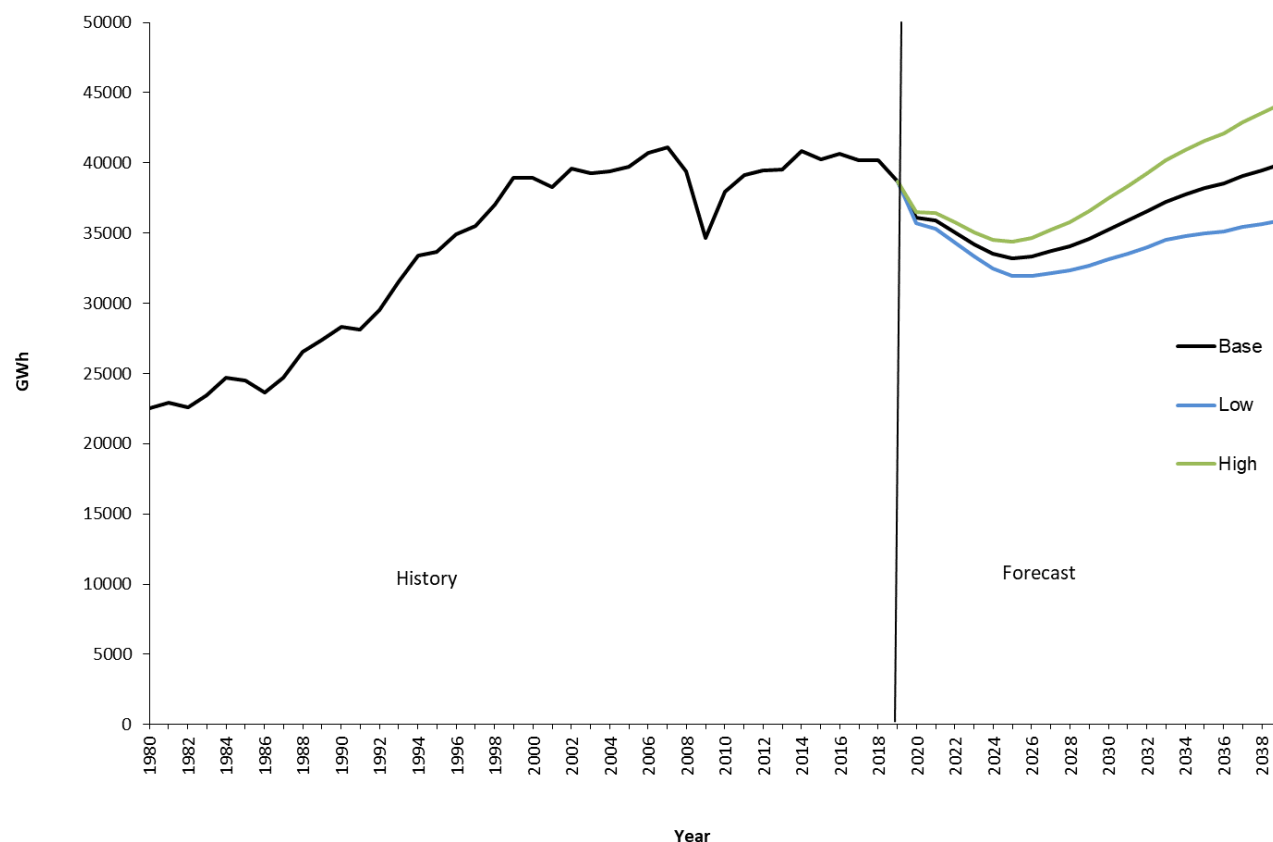
Table 7-4. History of SUFG Industrial Sector Growth Rates (Percent)

Forecast	Output	Mix Effects	Electric Energy-weighted Output	Without DSM		With DSM	
				Intensity	Sales Growth	Intensity	Sales Growth
2021 SUFG Base (2020-2039)	1.31	-0.70	0.61	-0.08	0.53	-0.08	0.53
2019 SUFG Base (2018-2037)	1.35	-0.71	0.64	0.62	1.26	0.62	1.26
2018 SUFG Base (2016-2035)	2.18	-0.58	1.60	-0.13	1.47	-0.15	1.45

Table 7-5. Indiana Industrial Electricity Sales Average Compound Growth Rates by Scenario (Percent)

Average Compound Growth Rates			
Forecast Period	Base	Low	High
2020-2039	0.53	0.02	1.01

Figure 7-4. Indiana Industrial Electricity Sales by Scenario in GWh



Note: See the Appendix to this report for historical and projected values.

2021 Indiana Electricity Projections

Chapter Seven

Indiana Industrial Electricity Price Projections

Historical values and current projections of industrial electricity prices are shown in Table 7-6 and Figure 7-5. In real terms, industrial electricity prices declined from the mid-1980s until 2002. Real industrial electricity prices have risen since 2002 due to increases in fuel costs and the installation of new emissions control equipment. SUFG projects real industrial electricity prices to rise until 2028 and then decline gradually, with some volatility late in the forecast period. SUFG's real price projections for the individual IOUs follow the same patterns as the state as a whole, but there are variations across the utilities. Historical and forecast prices are included in the Appendix to this report.

Figure 7-5. Indiana Industrial Base Real Price Projections (Cents/kWh in 2019 Dollars)

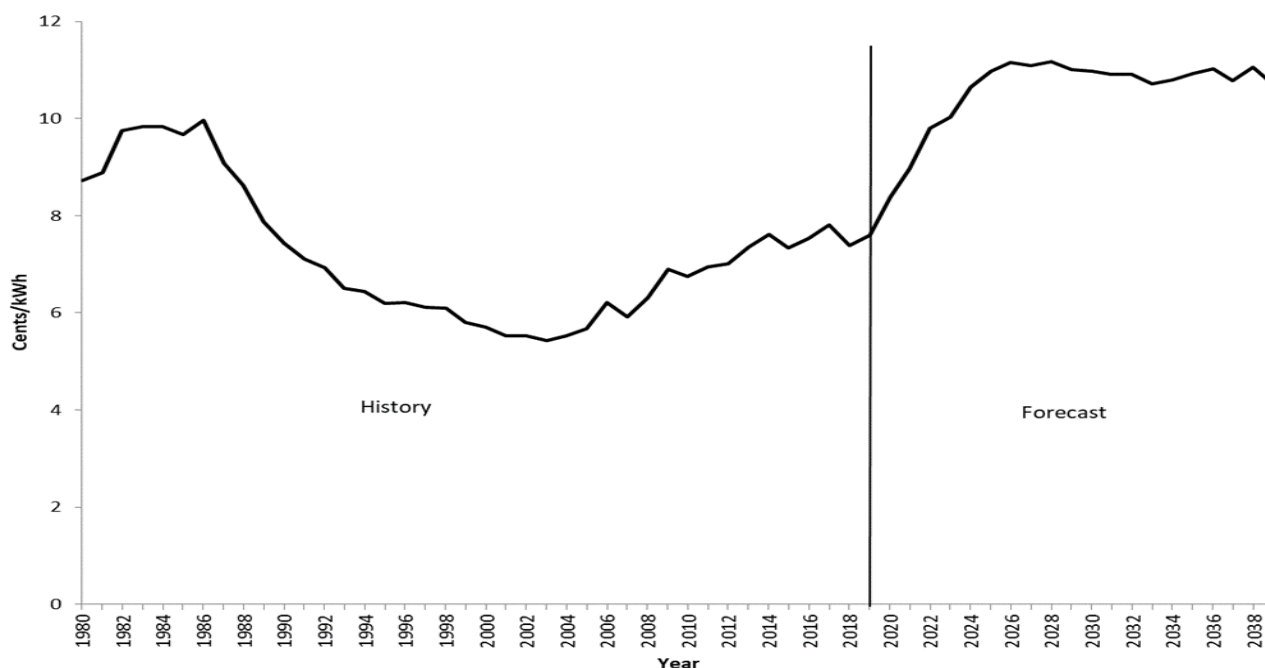


Table 7-6. Indiana Industrial Base Real Price Average Compound Growth Rates (Percent)

Average Compound Growth Rates	
Selected Periods	Percent
1995-2000	-1.63
2000-2005	-0.12
2005-2010	3.54
2010-2015	1.68
2015-2020	2.72
2020-2025	5.53
2025-2030	0.00
2030-2035	-0.09
2035-2039	-0.53
2020-2039	1.29

Note: See the Appendix to this report for historical and projected values and an explanation of how SUFG arrives at these numbers.

Appendix

In developing the historical energy, summer peak demand and rates data shown in the body and appendix of this document, SUFG relied on several sources of data. These sources include:

1. FERC Form 1;
2. Rural Utilities Service (RUS) Form 7 or Form 12;
3. Uniform Statistical Report;
4. Utility Load Forecast Reports;
5. Integrated Resource Plan Filings;
6. Annual Reports; and
7. SUFG Confidential Data Requests.

SUGF relied on public sources where possible, but some generally more detailed data was obtained from Indiana utilities under confidential agreements of nondisclosure. All data presented in this report have been aggregated to total Indiana statewide energy, demand and rates to avoid disclosure.

In most instances the source of SUFG's data can be traced to a particular page of a certain publication, e.g., residential energy sales for an IOU are found on page 304 of FERC Form 1. However, in several cases it is not possible to directly trace a particular number to a public data source. These exceptions arise due to:

1. geographic area served by the utility;
2. classification of sales data; and
3. unavailability of sectoral level sales data.

Indiana Michigan Power Company (I&M), Wabash Valley Power Association (WVPA), Indiana Municipal Power Agency (IMPA), and Hoosier Energy serve load outside of the state which SUFG excluded in developing projections for Indiana. I&M's load is split approximately 86-14 percent between Indiana and Michigan. While the majority of WVPA's load is in Indiana, 68 percent, it does have members in Illinois and Missouri. IMPA has a wholesale member in Ohio although approximately 99 percent of their load is still in Indiana. Hoosier Energy serves members in Indiana and Illinois. Approximately 95 percent of Hoosier's load is currently in Indiana. These utilities have provided SUFG with data pertaining to their Indiana load.

Some Indiana utilities report sales to the commercial and industrial sectors (SUGF's classification) as sales to one aggregate classification or sales to small and large customers. In order to obtain commercial and industrial sales for these utilities, SUFG has requested data in these classifications directly from the utilities, developed approximation schemes to disaggregate the sales data, or combined more than one source of data to develop commercial and industrial sales estimates. For example, until recently the Uniform Statistical Report contained industrial sector sales for IOUs. This

2021 Indiana Electricity Projections

Appendix

data can be subtracted from aggregate FERC Form 1 small and large customer sales data to obtain an estimate of commercial sales.

SUFG does not have sectoral level sales data for the unaffiliated rural electric membership cooperatives (REMCs) and unaffiliated municipalities. SUFG obtains aggregate sales data from the FERC Form 1, then allocates the sales to residential, commercial, industrial and other sales with an allowance for losses. These allocation factors were developed by examining the mix of energy sales for other Indiana REMCs and municipalities. Thus, the sales estimates for unaffiliated REMCs are weighted heavily toward the residential sector and those for unaffiliated municipalities are more evenly balanced between the residential, commercial and industrial sectors.

SUFG's estimates of losses are calculated using a constant percentage loss factor applied to retail sales and sales-for-resale (when appropriate). These loss factors are based on FERC Form 1 data and discussions with Indiana utility personnel.

Total energy requirements for an individual utility are obtained by adding retail sales, sales-for-resale (if any) and losses. Total energy requirements for the state as a whole are obtained by adding retail sales and losses for the eight entities that SUFG models, plus an estimate of sales and losses for unaffiliated municipalities and cooperatives. Sales-for-resale are excluded from the state aggregate total energy requirements to avoid double counting.

Summer peak demand estimates are based on a combination of FERC Form 1 data and company sources.

Statewide summer peak demand may not be obtained by simply adding across utilities because of diversity. Diversity refers to the fact that all Indiana utilities do not experience their summer peak demand at the same instant. Due to differences in weather, sectoral mix, end-use saturation, etc., the utilities tend to face their individual summer peak demands at different hours, days, or even months. To obtain an estimate of statewide peak demand, the summer peak demand estimates for the individual utilities are added together and adjusted for diversity.

The historical energy sales and peak demand data presented in this appendix represent SUFG's accounting of actual historical values. In developing the current forecast, SUFG was required to estimate some detailed sector-specific data for a few utilities. This data was unavailable from some utilities due to changes in data collection and/or reporting requirements. In the industrial sector, SUFG estimates two-digit, Standard Industrial Code sales and revenue data for two IOUs. This data was estimated from total industrial sales data by assuming the same allocation of industrial sales at the two-digit level as observed during recent years. SUFG was also unable to obtain sales and revenue data for the commercial sector at the same level of detail from some IOUs. The detailed commercial sector data is necessary to calibrate SUFG's commercial sector model, but since the commercial sector model was not recalibrated for this forecast, no estimation was attempted. The not-for-profit utilities have not traditionally been able to supply SUFG with data at the two-digit level of detail. However, the not-for-profit utilities were able to provide SUFG with a breakdown of member load by customer class.

SUFG feels relatively comfortable with these estimates, but is concerned about the future availability of detailed sector-specific data. If data proves to be unavailable in the future, SUFG will either be forced to develop more sophisticated allocation schemes to support the energy forecasting models or develop less data intensive, less detailed energy forecasting models.

2021 Indiana Electricity Projections Appendix

SUFG 2021 Base Energy Requirements (GWh) and Summer Peak Demand (MW) for Indiana

Year	Retail Sales					Losses	Energy Required	Summer Demand
	Res	Com	Ind	Other	Total			
Hist 1992	22,916	18,556	29,540	619	71,632	5,014	76,646	14,055
Hist 1993	25,060	19,627	31,562	511	76,760	5,373	82,133	14,916
Hist 1994	25,176	20,116	33,395	507	79,193	5,544	84,737	15,010
Hist 1995	26,510	20,646	33,659	510	81,326	5,693	87,019	16,251
Hist 1996	26,833	20,909	34,920	536	83,197	5,824	89,021	16,162
Hist 1997	26,792	21,295	35,499	530	84,116	5,888	90,004	16,021
Hist 1998	27,663	22,166	37,012	520	87,360	6,115	93,476	16,638
Hist 1999	29,180	23,078	38,916	543	91,717	6,420	98,137	17,246
Hist 2000	28,684	23,721	38,957	529	91,890	6,432	98,322	16,738
Hist 2001	29,437	23,953	38,293	526	92,208	6,455	98,663	17,511
Hist 2002	32,363	24,980	39,594	540	97,476	6,823	104,300	18,831
Hist 2003	31,177	24,940	39,285	589	95,992	6,719	102,711	18,794
Hist 2004	31,042	25,351	39,380	644	96,417	6,749	103,166	18,193
Hist 2005	33,691	26,857	39,702	619	100,869	7,061	107,930	19,944
Hist 2006	32,527	26,836	40,683	603	100,648	7,045	107,694	20,855
Hist 2007	35,019	27,782	41,112	645	104,557	7,319	111,876	20,858
Hist 2008	34,158	27,536	39,389	652	101,735	7,121	108,856	19,275
Hist 2009	32,689	26,223	34,631	660	94,203	6,594	100,797	19,054
Hist 2010	35,217	26,989	37,934	693	100,833	7,058	107,891	20,315
Hist 2011	34,117	26,714	39,129	645	100,606	7,042	107,648	21,729
Hist 2012	33,217	26,704	39,448	602	99,971	6,998	106,969	21,048
Hist 2013	33,753	26,807	39,506	607	100,672	7,047	107,719	20,423
Hist 2014	34,010	26,750	40,833	619	102,212	7,155	109,366	20,111
Hist 2015	32,538	25,810	40,275	597	99,219	6,945	106,165	19,013
Hist 2016	33,024	25,970	40,669	603	100,265	7,019	107,284	18,872
Hist 2017	31,587	25,392	40,197	600	97,777	6,844	104,621	18,076
Hist 2018	34,428	25,945	40,166	600	101,139	7,080	108,219	19,367
Hist 2019	33,213	25,154	38,678	562	97,607	6,833	104,440	19,012
Frcst 2020	33,159	24,242	36,118	553	94,072	7,027	101,098	19,560
Frcst 2021	33,064	24,289	35,901	557	93,811	7,024	100,835	19,376
Frcst 2022	33,107	23,944	35,072	562	92,685	6,976	99,661	19,051
Frcst 2023	33,082	23,445	34,184	565	91,276	6,895	98,171	18,736
Frcst 2024	33,163	22,876	33,509	568	90,116	6,838	96,954	18,511
Frcst 2025	33,308	22,389	33,172	570	89,439	6,807	96,246	18,359
Frcst 2026	33,599	22,038	33,309	572	89,519	6,827	96,346	18,395
Frcst 2027	33,952	21,747	33,729	576	90,005	6,880	96,884	18,494
Frcst 2028	34,095	21,347	34,054	578	90,074	6,895	96,969	18,331
Frcst 2029	34,413	21,107	34,610	582	90,711	6,959	97,670	18,432
Frcst 2030	34,770	20,920	35,273	586	91,550	7,035	98,585	18,674
Frcst 2031	35,023	20,694	35,893	587	92,197	7,085	99,281	18,802
Frcst 2032	35,246	20,457	36,580	589	92,872	7,140	100,013	18,872
Frcst 2033	35,539	20,282	37,252	591	93,665	7,201	100,865	18,850
Frcst 2034	35,756	20,075	37,757	595	94,183	7,251	101,435	18,862
Frcst 2035	35,981	19,982	38,188	597	94,748	7,298	102,046	18,953
Frcst 2036	36,262	19,901	38,526	598	95,287	7,343	102,630	19,153
Frcst 2037	36,545	19,823	39,080	599	96,048	7,396	103,444	19,440
Frcst 2038	36,814	19,813	39,477	601	96,706	7,441	104,148	19,563
Frcst 2039	37,255	19,939	39,909	604	97,708	7,521	105,228	19,650
Average Compound Growth Rates (%)								
Year-Year	Res	Com	Ind	Other	Total	Losses	Energy Required	Summer Demand
1995-2000	1.59	2.82	2.97	0.74	2.47	2.47	2.47	0.59
2000-2005	3.27	2.51	0.38	3.19	1.88	1.88	1.88	3.57
2005-2010	0.89	0.10	-0.91	2.26	-0.01	-0.01	-0.01	0.37
2010-2015	-1.57	-0.89	1.20	-2.94	-0.32	-0.32	-0.32	-1.32
2015-2020	0.38	-1.25	-2.16	-1.50	-1.06	0.23	-0.97	0.57
2020-2025	0.09	-1.58	-1.69	0.61	-1.00	-0.63	-0.98	-1.26
2025-2030	0.86	-1.35	1.24	0.56	0.47	0.66	0.48	0.34
2030-2035	0.69	-0.91	1.60	0.35	0.69	0.74	0.69	0.30
2035-2039	0.87	-0.05	1.11	0.31	0.77	0.75	0.77	0.91
2020-2039	0.61	-1.02	0.53	0.47	0.20	0.36	0.21	0.02

2021 Indiana Electricity Projections

Appendix

SUFG 2021 Low Energy Requirements (GWh) and Summer Peak Demand (MW) for Indiana

Year	Retail Sales					Losses	Energy Required	Summer Demand
	Res	Com	Ind	Other	Total			
Hist 1992	22,916	18,556	29,540	619	71,632	5,014	76,646	14,055
Hist 1993	25,060	19,627	31,562	511	76,760	5,373	82,133	14,916
Hist 1994	25,176	20,116	33,395	507	79,193	5,544	84,737	15,010
Hist 1995	26,510	20,646	33,659	510	81,326	5,693	87,019	16,251
Hist 1996	26,833	20,909	34,920	536	83,197	5,824	89,021	16,162
Hist 1997	26,792	21,295	35,499	530	84,116	5,888	90,004	16,021
Hist 1998	27,663	22,166	37,012	520	87,360	6,115	93,476	16,638
Hist 1999	29,180	23,078	38,916	543	91,717	6,420	98,137	17,246
Hist 2000	28,684	23,721	38,957	529	91,890	6,432	98,322	16,738
Hist 2001	29,437	23,953	38,293	526	92,208	6,455	98,663	17,511
Hist 2002	32,363	24,980	39,594	540	97,476	6,823	104,300	18,831
Hist 2003	31,177	24,940	39,285	589	95,992	6,719	102,711	18,794
Hist 2004	31,042	25,351	39,380	644	96,417	6,749	103,166	18,193
Hist 2005	33,691	26,857	39,702	619	100,869	7,061	107,930	19,944
Hist 2006	32,527	26,836	40,683	603	100,648	7,045	107,694	20,855
Hist 2007	35,019	27,782	41,112	645	104,557	7,319	111,876	20,858
Hist 2008	34,158	27,536	39,389	652	101,735	7,121	108,856	19,275
Hist 2009	32,689	26,223	34,631	660	94,203	6,594	100,797	19,054
Hist 2010	35,217	26,989	37,934	693	100,833	7,058	107,891	20,315
Hist 2011	34,117	26,714	39,129	645	100,606	7,042	107,648	21,729
Hist 2012	33,217	26,704	39,448	602	99,971	6,998	106,969	21,048
Hist 2013	33,753	26,807	39,506	607	100,672	7,047	107,719	20,423
Hist 2014	34,010	26,750	40,833	619	102,212	7,155	109,366	20,111
Hist 2015	32,538	25,810	40,275	597	99,219	6,945	106,165	19,013
Hist 2016	33,024	25,970	40,669	603	100,265	7,019	107,284	18,872
Hist 2017	31,587	25,392	40,197	600	97,777	6,844	104,621	18,076
Hist 2018	34,428	25,945	40,166	600	101,139	7,080	108,219	19,367
Hist 2019	33,213	25,154	38,678	562	97,607	6,833	104,440	19,012
Frcst 2020	32,814	24,053	35,725	548	93,139	6,938	100,077	19,555
Frcst 2021	32,693	24,086	35,336	552	92,666	6,920	99,586	19,334
Frcst 2022	32,706	23,727	34,341	557	91,331	6,856	98,187	18,976
Frcst 2023	32,653	23,215	33,300	559	89,726	6,760	96,486	18,625
Frcst 2024	32,713	22,625	32,478	562	88,378	6,690	95,068	18,363
Frcst 2025	32,842	22,116	31,980	564	87,502	6,645	94,147	18,177
Frcst 2026	33,115	21,735	31,934	566	87,350	6,650	94,000	18,175
Frcst 2027	33,446	21,415	32,154	570	87,585	6,685	94,270	18,232
Frcst 2028	33,613	21,021	32,314	571	87,519	6,692	94,211	18,049
Frcst 2029	33,903	20,749	32,668	575	87,896	6,737	94,633	18,100
Frcst 2030	34,229	20,532	33,120	579	88,460	6,794	95,253	18,299
Frcst 2031	34,476	20,290	33,542	580	88,888	6,830	95,717	18,388
Frcst 2032	34,667	20,030	34,002	582	89,281	6,865	96,146	18,407
Frcst 2033	34,975	19,850	34,500	584	89,909	6,918	96,827	18,362
Frcst 2034	35,158	19,604	34,792	588	90,142	6,951	97,093	18,320
Frcst 2035	35,360	19,491	34,994	590	90,435	6,978	97,413	18,362
Frcst 2036	35,608	19,376	35,126	591	90,701	7,003	97,704	18,515
Frcst 2037	35,894	19,280	35,465	592	91,232	7,045	98,277	18,760
Frcst 2038	36,121	19,259	35,650	594	91,625	7,070	98,695	18,835
Frcst 2039	36,534	19,350	35,871	597	92,353	7,133	99,486	18,881
Average Compound Growth Rates (%)								
Year-Year	Res	Com	Ind	Other	Total	Losses	Energy Required	Summer Demand
1995-2000	1.59	2.82	2.97	0.74	2.47	2.47	2.47	0.59
2000-2005	3.27	2.51	0.38	3.19	1.88	1.88	1.88	3.57
2005-2010	0.89	0.10	-0.91	2.26	-0.01	-0.01	-0.01	0.37
2010-2015	-1.57	-0.89	1.20	-2.94	-0.32	-0.32	-0.32	-1.32
2015-2020	0.17	-1.40	-2.37	-1.70	-1.26	-0.02	-1.17	0.56
2020-2025	0.02	-1.67	-2.19	0.58	-1.24	-0.86	-1.21	-1.45
2025-2030	0.83	-1.48	0.70	0.53	0.22	0.44	0.23	0.13
2030-2035	0.65	-1.04	1.11	0.37	0.44	0.54	0.45	0.07
2035-2039	0.82	-0.18	0.62	0.31	0.53	0.55	0.53	0.70
2020-2039	0.57	-1.14	0.02	0.46	-0.04	0.15	-0.03	-0.18

2021 Indiana Electricity Projections Appendix

SUFG 2021 High Energy Requirements (GWh) and Summer Peak Demand (MW) for Indiana

Year		Retail Sales					Losses	Energy Required	Summer Demand
		Res	Com	Ind	Other	Total			
Hist	1992	22,916	18,556	29,540	619	71,632	5,014	76,646	14,055
Hist	1993	25,060	19,627	31,562	511	76,760	5,373	82,133	14,916
Hist	1994	25,176	20,116	33,395	507	79,193	5,544	84,737	15,010
Hist	1995	26,510	20,646	33,659	510	81,326	5,693	87,019	16,251
Hist	1996	26,833	20,909	34,920	536	83,197	5,824	89,021	16,162
Hist	1997	26,792	21,295	35,499	530	84,116	5,888	90,004	16,021
Hist	1998	27,663	22,166	37,012	520	87,360	6,115	93,476	16,638
Hist	1999	29,180	23,078	38,916	543	91,717	6,420	98,137	17,246
Hist	2000	28,684	23,721	38,957	529	91,890	6,432	98,322	16,738
Hist	2001	29,437	23,953	38,293	526	92,208	6,455	98,663	17,511
Hist	2002	32,363	24,980	39,594	540	97,476	6,823	104,300	18,831
Hist	2003	31,177	24,940	39,285	589	95,992	6,719	102,711	18,794
Hist	2004	31,042	25,351	39,380	644	96,417	6,749	103,166	18,193
Hist	2005	33,691	26,857	39,702	619	100,869	7,061	107,930	19,944
Hist	2006	32,527	26,836	40,683	603	100,648	7,045	107,694	20,855
Hist	2007	35,019	27,782	41,112	645	104,557	7,319	111,876	20,858
Hist	2008	34,158	27,536	39,389	652	101,735	7,121	108,856	19,275
Hist	2009	32,689	26,223	34,631	660	94,203	6,594	100,797	19,054
Hist	2010	35,217	26,989	37,934	693	100,833	7,058	107,891	20,315
Hist	2011	34,117	26,714	39,129	645	100,606	7,042	107,648	21,729
Hist	2012	33,217	26,704	39,448	602	99,971	6,998	106,969	21,048
Hist	2013	33,753	26,807	39,506	607	100,672	7,047	107,719	20,423
Hist	2014	34,010	26,750	40,833	619	102,212	7,155	109,366	20,111
Hist	2015	32,538	25,810	40,275	597	99,219	6,945	106,165	19,013
Hist	2016	33,024	25,970	40,669	603	100,265	7,019	107,284	18,872
Hist	2017	31,587	25,392	40,197	600	97,777	6,844	104,621	18,076
Hist	2018	34,428	25,945	40,166	600	101,139	7,080	108,219	19,367
Hist	2019	33,213	25,154	38,678	562	97,607	6,833	104,440	19,012
Frcst	2020	33,509	24,435	36,505	558	95,008	7,117	102,125	19,566
Frcst	2021	33,415	24,481	36,446	562	94,904	7,125	102,029	19,407
Frcst	2022	33,492	24,152	35,781	568	93,993	7,093	101,086	19,116
Frcst	2023	33,477	23,662	35,043	570	92,752	7,023	99,775	18,830
Frcst	2024	33,575	23,114	34,527	574	91,790	6,980	98,770	18,641
Frcst	2025	33,744	22,653	34,358	577	91,331	6,965	98,296	18,524
Frcst	2026	34,026	22,306	34,661	578	91,571	6,995	98,566	18,586
Frcst	2027	34,394	22,036	35,264	583	92,276	7,062	99,338	18,722
Frcst	2028	34,567	21,671	35,794	584	92,616	7,096	99,712	18,605
Frcst	2029	34,904	21,461	36,577	589	93,531	7,180	100,712	18,758
Frcst	2030	35,299	21,315	37,512	594	94,721	7,284	102,005	19,057
Frcst	2031	35,496	21,080	38,319	593	95,488	7,336	102,824	19,206
Frcst	2032	35,740	20,874	39,248	596	96,458	7,410	103,868	19,327
Frcst	2033	36,033	20,716	40,188	598	97,535	7,489	105,024	19,351
Frcst	2034	36,222	20,508	40,902	601	98,233	7,549	105,782	19,389
Frcst	2035	36,445	20,424	41,545	603	99,016	7,609	106,625	19,525
Frcst	2036	36,716	20,351	42,077	604	99,748	7,666	107,415	19,753
Frcst	2037	37,010	20,295	42,872	606	100,783	7,738	108,520	20,089
Frcst	2038	37,289	20,301	43,516	607	101,713	7,799	109,512	20,262
Frcst	2039	37,752	20,444	44,177	610	102,983	7,896	110,879	20,386
Average Compound Growth Rates (%)									
Year-Year		Res	Com	Ind	Other	Total	Losses	Energy Required	Summer Demand
1995-2000		1.59	2.82	2.97	0.74	2.47	2.47	2.47	0.59
2000-2005		3.27	2.51	0.38	3.19	1.88	1.88	1.88	3.57
2005-2010		0.89	0.10	-0.91	2.26	-0.01	-0.01	-0.01	0.37
2010-2015		-1.57	-0.89	1.20	-2.94	-0.32	-0.32	-0.32	-1.32
2015-2020		0.59	-1.09	-1.95	-1.31	-0.86	0.42	-0.77	0.11
2020-2025		0.14	-1.50	-1.21	0.64	-0.79	-0.09	-0.76	-0.41
2025-2030		0.91	-1.21	1.77	0.60	0.73	0.97	0.74	0.64
2030-2035		0.64	-0.85	2.06	0.28	0.89	0.88	0.89	0.49
2035-2039		0.88	0.02	1.55	0.32	0.99	0.93	0.98	1.08
2020-2039		0.63	-0.93	1.01	0.47	0.43	0.55	0.43	0.22

2021 Indiana Electricity Projections

Appendix

Indiana Base Average Retail Rates (Cents/kWh) (in 2019 Dollars)

Year	Res	Com	Ind	Average
1992	11.00	9.28	6.93	8.73
1993	10.35	8.69	6.50	8.20
1994	10.38	8.66	6.44	8.14
1995	10.21	8.59	6.19	8.00
1996	10.18	8.56	6.22	7.97
1997	10.38	8.47	6.12	7.94
1998	10.42	8.48	6.09	7.94
1999	10.13	8.30	5.81	7.68
2000	9.71	7.87	5.70	7.39
2001	9.52	7.91	5.53	7.31
2002	9.32	7.85	5.52	7.27
2003	9.29	7.74	5.44	7.18
2004	9.35	7.86	5.52	7.27
2005	9.37	8.01	5.67	7.44
2006	10.04	8.48	6.21	7.95
2007	9.65	8.46	5.91	7.75
2008	10.03	8.68	6.32	8.12
2009	10.67	9.31	6.89	8.80
2010	10.45	9.18	6.74	8.61
2011	10.83	9.43	6.94	8.83
2012	11.13	9.68	7.01	9.00
2013	11.61	10.07	7.36	9.41
2014	11.93	10.32	7.61	9.68
2015	11.89	10.07	7.33	9.49
2016	11.87	10.20	7.54	9.60
2017	12.21	10.56	7.81	9.89
2018	12.17	10.30	7.38	9.71
2019	12.63	10.71	7.60	10.05
2020	13.49	11.33	8.38	10.86
2021	14.64	12.19	8.97	11.71
2022	15.73	12.90	9.80	12.61
2023	16.45	13.46	10.02	13.13
2024	17.57	14.28	10.65	14.01
2025	18.12	14.70	10.97	14.45
2026	18.42	14.96	11.15	14.70
2027	18.40	14.96	11.09	14.66
2028	18.76	15.18	11.17	14.86
2029	18.63	14.97	11.01	14.68
2030	18.67	14.95	10.97	14.65
2031	18.61	14.86	10.91	14.55
2032	18.92	15.10	10.91	14.69
2033	18.76	14.88	10.71	14.48
2034	19.23	15.18	10.80	14.73
2035	19.40	15.26	10.92	14.84
2036	19.50	15.29	11.03	14.92
2037	19.37	15.14	10.79	14.72
2038	19.81	15.51	11.06	15.07
2039	19.60	15.28	10.69	14.79
Average Compound Growth Rates (%)				
Year-Year	Res	Com	Ind	Average
1995-2000	-0.99	-1.75	-1.63	-1.56
2000-2005	-0.72	0.36	-0.12	0.12
2005-2010	2.22	2.76	3.54	2.97
2010-2015	2.61	1.87	1.68	1.95
2015-2020	2.56	2.38	2.72	2.74
2020-2025	6.08	5.35	5.53	5.88
2025-2030	0.60	0.34	0.00	0.27
2030-2035	0.76	0.41	-0.09	0.26
2035-2039	0.26	0.04	-0.53	-0.09
2020-2039	1.99	1.59	1.29	1.64

Note: Energy Weighted Average Rates for Indiana IOUs.

Results for the low and high economic activity cases are similar and are not reported.

List of Acronyms

ACGR	Average Compound Growth Rates
Btu	British thermal unit
CC	Combined Cycle
CEDMS	Commercial Energy Demand Modeling System
CEMR	Center for Econometric Model Research
CT	Combustion Turbine
DR	Demand Response
DSM	Demand-Side Management
EE	Energy Efficiency
EIA	Energy Information Administration
EPA	U.S. Environmental Protection Agency
EPRI	Electric Power Research Institute
FERC	Federal Energy Regulatory Commission
GDP	Gross Domestic Product
GSP	Gross State Product
GWh	Gigawatt-hour
HVAC	Heating, Ventilation and Air Conditioning
I&M	Indiana Michigan Power Company
IBRC	Indiana Business Research Center
IOU	Investor-Owned Utility
IRP	Integrated Resource Plan
IURC	Indiana Utility Regulatory Commission
IMPA	Indiana Municipal Power Agency
KLEM	Capital, labor, energy and materials
kWh	Kilowatt-hour
LMSTM	Load Management Strategy Testing Model
LPG	Liquefied Petroleum Gas
mmBtu	million British thermal units
MW	Megawatt
NAICS	North American Industry Classification System
NFP	Not-for-Profit
NREL	National Renewable Energy Laboratory
OPEC	Organization of Petroleum Exporting Countries
ORNL	Oak Ridge National Labs
REMC	Rural Electric Membership Cooperative
REDMS	Residential Energy Demand Modeling System
REEMS	Residential End-Use Energy Modeling System
RTO	Regional Transmission Organization
RUS	U.S. Department of Agriculture Rural Utilities Service
SIC	Standard Industrial Classification
sqft	Square feet
SUFG	State Utility Forecasting Group
WVPA	Wabash Valley Power Association